



**Kingfisher  
Lighting**

Part of the LUCECO<sub>plc</sub> group of companies

# Specification Guide

[www.kingfisherlighting.com](http://www.kingfisherlighting.com)

4th Edition

STREET / AMENITY / ARCHITECTURAL / AREA

Part of the LUCECO<sub>plc</sub> group of companies



## Discover Kingfisher

Illuminating the UK for almost 35 years', we've worked with high-profile clients on many award-winning developments across the UK. Working closely with trusted consultants on everything from the minimalist areas to heritage cityscapes. Our carefully curated range incorporates world-class luminaires alongside bespoke bracketry and innovative project solutions.

### Quality Product Design

For over 20 years' the close relationship we've shared with our Italian partners, AEC Illuminazione and Arcluce S.p.A has allowed us to offer an ever growing range of quality Italian-built luminaires. These award winning collections, alongside our own highly developed range, combine bespoke optical systems with stylish lighting design to bring best-in-class lighting solutions with a focus on UK markets.

### Environmental Responsibility

We are dedicated to reducing the impact of exterior lighting on the world around us. Embedded into our company ethos is the drive to reduce carbon usage in manufacturing processes, create sustainable packaging and develop systems that fit with the concept of reuse, repair and recycle.



# Contents

4	KF Lighting and Partners
8	AEC
10	Reflector Technology
12	Arcluce
14	The Quality of Light
16	The Environmental Impact
20	Lighting Design Service
22	Kingfisher Controls
24	Catenary
25	Emergency
27	Optics Explained
34	Amenity
64	Street
76	Flood Lighting
90	Architectural and Accent
116	Wall Lighting
124	Bollards and Light Poles
152	Inground, Recessed and Surface Mounted
167	Columns
171	Brackets
174	Quick Reference Guide
177	Kingfisher Sport
178	Kingfisher Rail
180	Symbols Explained
182	Product Index
183	Contacts





**The Luceco PLC group of companies includes Kingfisher Lighting, Luceco LED Lighting, DW Windsor, BG Electrical, Nexus, Masterplug, Ross and Sync EV.**

Their mission is 'To build a leading portfolio of thoughtfully designed and diligently made products that provide environmentally responsible electrical and lighting solutions to our customers.'

The group has many offices in the UK including assembly, distribution, warehousing and sales functions. However, alongside our UK facilities they also have many offices around the world offering sales, manufacturing and logistics operations.

They also have UK laboratories which host the latest testing equipment guaranteeing quality production and performance from all their product offerings.

Luceco PLC's dedication to innovation allows the group to be at the forefront of LED technology which sets us apart from the competition.

**[www.luceco.com](http://www.luceco.com)**





**The Kingfisher philosophy is to create bespoke project solutions with a focus on both style and functionality in order to deliver best-in-class lighting schemes across the UK and beyond.**

Our wrap-around service combines project design and management, technical and product support, BIM capabilities, energy calculations and return on investment proposals.

## Technical Support

Since no two projects are the same, we provide technical support where it's needed, whether this be at the specification stage or for contractors working to install and commission lightings schemes. Our experts guide you through product selection, payback calculations, sustainability data, and smart technology integration.

## Project Design

Our team of highly skilled lighting designers are fully LIA and LET qualified. Their work ranges from plot calculations to full 3D visualisations and walkthroughs. Working closely with our clients, we focus on creating efficient schemes with the perfect balance of performance and aesthetic in order to achieve the best results for every project.

## BIM Capabilities

Building Information Modelling (BIM) is an essential tool adding to the success of a project. Ensuring the design and build process runs smoothly, we provide full BIM files for all luminaires and work closely with project managers to understand full specification requirements in order to create innovative solutions.

## Controls and Smart Technology

In order to create a scheme that is capable of evolving and adapting to changing environments, control systems give flexibility and functionality to any lighting project. The right control system will offer peak energy efficiency, real-time data analysis, and of course allow for the versatility of visual aesthetics.

Whether it be simple step-dimming protocols or full DMX programmes, Kingfisher Controls allows for a bespoke system that meets the requirements of any complex project.

## Project Management

From conception to completion our Project Management Team work alongside clients to overcome potential challenges. Dedicated to providing full service solutions, our Team have the knowledge and experience to guide you through everything from choosing the right selection of products that perfectly compliment your scheme, to technical advice and guidance on environmental considerations.

## Delivery

With a dedicated fleet of vehicles, we guarantee the safe delivery of products directly to site. With FORS Silver status, Euro 6 compliance, along with qualified engineers and full lifting equipment, we provide peace of mind to ensure project schedules are successfully met.







# Our Partners



## **AEC Illuminazione**

Operating worldwide for over 60 years, AEC established themselves as technical innovators and experts in performance lighting. With of focus on the blend of classic Italian design and future-proof technology, AEC boast a vast range of elegant performance luminaires.

With continuous investment into research and development, as well as high-tech production, they combine energy efficiency, quality of light, and innovative design into their products. Their state-of-the-art facility in Italy hosts two UL-certified photometric laboratories, providing the latest in testing technology as well as certified photometric and radiometric measurements.



## **Arcluce**

Developing luminaires for almost 40 years at their facility near Milan, Arcluce are committed to continuous research and development with their product ranges focusing on advanced technologies and stylish aesthetics.

Following their ethos 'Designed for Humans', Arcluce are well known for their high quality architectural and amenity fixtures in which promote visual comfort, luminaire longevity and lasting performance.





DEKRA

AEC  
LAB

UL  
Underwriters  
Laboratories

Underwriters  
Laboratories

Wand gitter

Wand gitter

Wand gitter



# About AEC

**Since 1957, AEC Illuminazione has been creating innovative lighting solutions across the globe, including the illumination of many cities, such as Milan, Berlin, Dubai, and London.**

Their legacy began 65 years ago when Cino Cici founded AEC and to this very day the company remains within the family.

From humble beginnings and now a global corporation, their passion for lighting remains strong, as demonstrated through their consistent research and development which keeps their products at the forefront of lighting technology.

Partners for over 20 years, we've created many high-performance lighting projects throughout the UK including Elephant and Castle, Baltimore Wharf, Hudson Quarter, and the Olympic Legacy Park.



# Reflector Technology

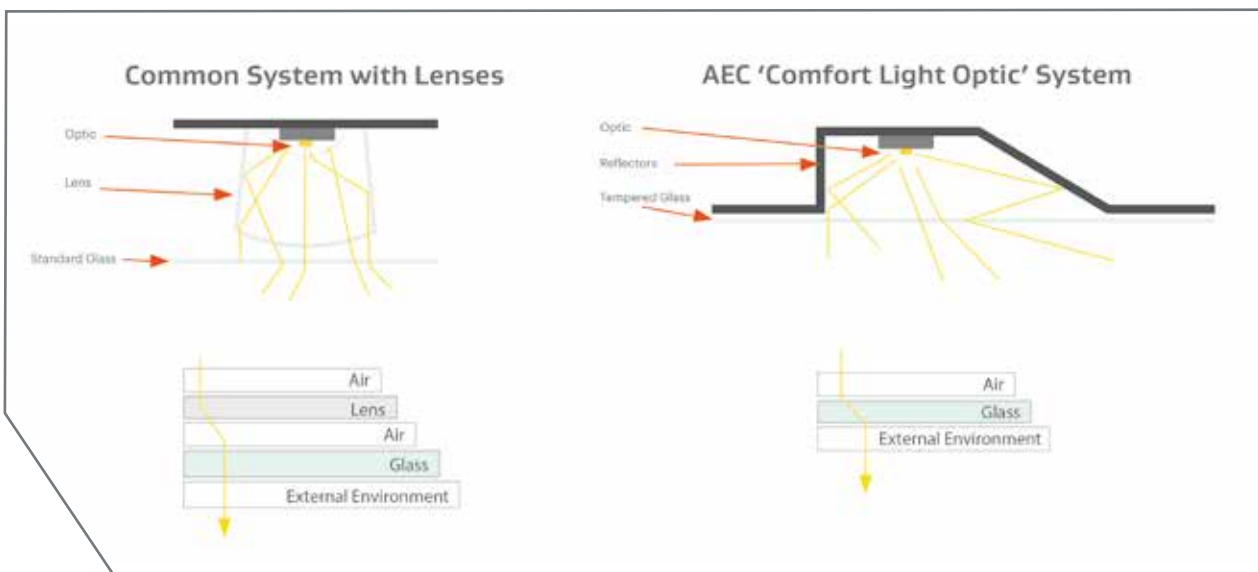
Designed by expert lighting engineers in their Italian facility, the Comfort Light Optic is AEC's innovative reflector system developed using aluminium housings alongside tempered glass screens to ensure the quality of the light is of the highest standard.

Reflector based systems offer a low glare distribution along with the perfect transition of light to the task area. This high spec technology is the most efficient solution for modern exterior lighting.

## How does this system work?

### The Lens System

In order for any reflector system to work, light must permeate through layers of lense and glass which can alter its path, otherwise known as refraction. However, the Comfort Light Optic eliminates these layers from an average of four down to two, which allows more efficient control of the light itself.





## What are the benefits of the AEC reflector system?

The Comfort Light Optic provides enhanced performance, increased efficiency, and greater protection, among other advantages:

### Low Glare

The Comfort Light Optic hosts the array of LED chips behind the reflectors, meaning they are not visible from outside of the fitting. As a result, there is less glare and a better light output, which increases visual comfort.

The reflector system meets the guidelines outlined in the 2017 Chief Medical Officer's report on Public Health Impacts of Pollution, which discusses the issues with bare LED lens systems. By shielding bare LEDs from view, Comfort Light Optics achieve BUG (Back-light, Up-light, Glare) ratings of B1-U0-G0.

The amount of glare emitted by a fitting is measured using the G-class rating system. Reflector systems reduce glare and can achieve better G-Class ratings, with G6 being achieved in many optics.

### Effective Light Transition

Through reducing the material used in the manufacturing process, fewer obstructions for the light to pass through ensures the light reaches its destination more efficiently.

### No Lens Degradation

Traditional lenses degrade and yellow over time as the materials breakdown. This along with environmental and heat factors reduces the usable life of the lenses.

By removing the lenses, the light source remains consistent throughout its lifetime and alleviates the risk of degradation.

### Easy, Safe Maintenance

Damages usually occur through dust, dirt and small wildlife entering the optical system, however with use of tempered glass these risks are drastically reduced. This increases the life and efficiency of the luminaire and reduces the need for complex maintenance works.

### Reduced Back Spill

The shape of the reflector housing has been specifically developed to promote a sharp cut off of light resulting in more control over the light being emitted. This creates little to no back spill mitigating against obtrusive light and light spill.







# About Arcluce

**Arcluce S.p.A. are lighting specialists based in San Zanone al Lambro, Italy. Their focus on the design and manufacture of interior and exterior architectural lighting alongside the continuous commitment to research and development, they have grown their product portfolio in reputation and popularity across the globe.**

With its origins dating back to 1989, Arcluce has been collaborating with architects and designers all over the world to promote the same culture of excellence and creativity that it has always devoted itself to.

The combination of specialised knowledge, innovation, and attention to detail at the core of the company, results in products that exude both function and style.



# The Quality of Light

The Kingfisher Lighting Team believe every lighting scheme deserves high quality luminaires that will stand the test of time. Longevity is an essential element of any project to ensure a better aesthetic, keep maintenance costs low and overall functionality at its best, which is why focusing on the quality of light is so important.

In contrast to purely functional lighting, the considerations for architectural lighting have been very different where they'd usually place focus on lux levels and standards. Many argue the most important factor of architectural schemes is the quality of light.



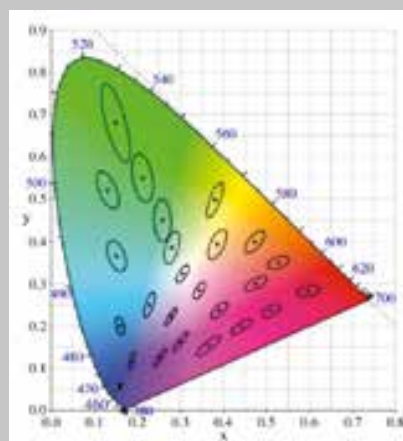
## LED Quality

When it comes to any lighting, the visual effect is fundamental and therefore consistency is required with every luminaire. With the continuous development of technology, LED is the future of lighting, but the large production of LED can result in a varying quality of products in the market. The issue with differing qualities is that low value LEDs are available, and the quality of your site may be compromised as the LEDs will change colour over their lifetime.

To ensure you get consistent LEDs for your site, manufacturers have developed a classifying system called 'binning'. This process includes analysing similarities in lumens, colour and voltage between the chips and separating them into 'bins'. The tighter the control on these 'bins' will ensure a higher quality luminaire.

To categorise the colour grouping of LED chips, manufacturers use a system called the Standard MacAdam Ellipse (SDCM). Through using this system it shows any LED chips that fall inside an ellipse will appear the same.

Kingfisher Lighting ensure all our products are created with class leading LED's, thanks to the tight control over the binning process.





## The Colour Rendering Index

Another consideration to be made when it comes to the quality of light would be the Colour Rendering Index.

When it comes to how accurate a light source represents a colour, the Colour Rendering Index (CRI) is key. The index runs on a 0-100 scale and to arrive at this figure, manufacturers test the product against a set of colours and judge them against a known source, and an average is calculated. Therefore, different LEDs can render colours more accurately.

For any lighting a CRI of 60 is the absolute lowest value that is acceptable, a good source would have a CRI 70 where as a high-quality source would have a CRI of 80 or possibly even as high as 90.



HPS 2000K



LED 4000K

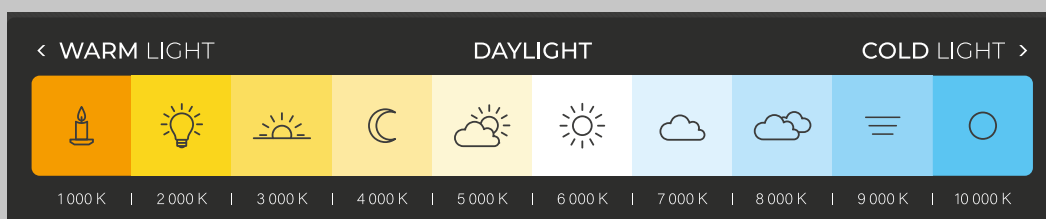
In other words, a decision needs to be made about how essential colour rendering is to a given project. An example would be if an outdoor art piece uses colour, it would be viewed the way the artist intended it to be viewed with a very high colour rendering source. Alternatively, in a park setting, the colour rendering is not as essential, but a source that can render green may be needed to make the plants look their best.

The last consideration for a high quality lighting scheme would be the Colour Temperature (CCT). When illuminating a façade, colour temperature is a great asset as it can complement a variety of materials. An example would be red brick, a warmer light source would amplify the visual appearance of a building featuring this material as opposed to stone.

If you are working with a mixture of colour temperatures, it would be better to opt for a more neutral colour such as 3000 and 4000K.

When it comes to marble or stone buildings, they would be more visually appealing with a light source of over 4000K.

Ensuring you get the right illumination is essential as we can see how different colour temperatures can impact the appearance of the buildings for better or worse.



# The Environmental Impact

**Minimising the impact of LED lighting on the wider environment is at the heart of Kingfisher Lighting practices. As part of the wider Luceco Group, we are working towards exceeding our target of being Net Zero by 2025 with careful attention paid to product design, manufacturing processes, product packaging, all the way through to lighting design techniques.**

A rising topic in the lighting industry, protecting our environment is an absolute must and as lighting is one of the most fundamental aspects in all species lives. We are making huge changes such as combatting light pollution, improving artificial lighting for areas with large populations of animals and plants as well as creating products that have a circular economy design. Let us guide you through all the aspects below -

## Light Pollution

Artificial Lighting brings many benefits to humans such as the safe movement of traffic, longer business hours, and security for properties and possessions – However artificial lighting can produce light pollution if not implemented correctly.

Light pollution is often associated with poor lighting design, low quality luminaires and improper installation. This often results in glare, sky glow, light trespass which are all forms of light pollution. However, unlike other pollutants, light pollution can be reversed.

The International Dark Skies Association (IDA) have made it their mission to reduce the amount of light pollution across the world. They educate the public on the consequences of light pollution and provide useful insights and resources in their campaign.

The IDA is an internationally recognised organisation dedicated to reducing the impact of the excessive use of artificial light on the night sky. They recommend reputable manufacturers who can meet their strict criteria and award the 'IDA Seal of Approval'. The criteria includes reduced back spill, flat-to-ground illumination, and 0% ULOR.





# The Impact of Light on the Eco-System

The natural cycle of wildlife is seriously affected by artificial light. It is important understand the four main ways in which animals and insects are affected in order to reduce the damage to their ecological habitats.

## Attraction

Many nocturnal animals navigate using the moon and the stars, otherwise known as transverse orientation. Artificial light sources that emit the same characteristics of the celestial sky can often confuse wildlife into changing patterns and behaviour.



## Avoidance

Many insects avoid light in a bid to protect themselves from their predators. With the introduction of artificial light, their usual camouflage is no longer suited to these areas and therefore can cause greater difficulty in protecting themselves.



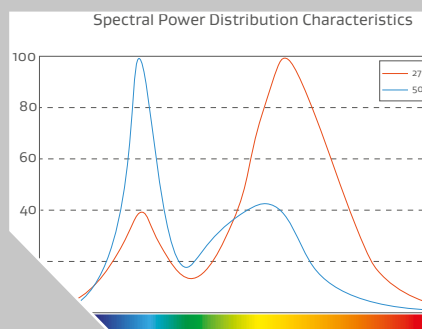
## Photoperiodism

Photoperiodism is the behavioural response of an organism to the relative periods of light and darkness. This can be daily, yearly or seasonal and is key to regulation of its life cycle, and can be affected by the introduction of artificial light.



## Spectral Quality

Species have evolved to function under a variety of light regimes. They respond to light stimuli and are tuned to the qualities of the visual spectrum. Usually in plants red and blue light are the most important light regions, yet other colours such as yellow and green were seen to have a role in the quality of crops. Equally certain animals, also react differently to the colours of the visual spectrum.



# Light and Organisms

## Plants

The process of photosynthesis is the conversion of light energy into chemical energy through cellular respiration in plants. This is later released to fuel the organisms' activities. However, artificial light can interrupt the species photoperiodism and therefore affect the pollination process, more specifically nocturnal and diurnal pollinators such as moths and bumble bees.



## Animals

Nocturnal animals are by nature, most active after dusk. However, light pollution can greatly alter their environment. The light interrupts their circadian rhythms and increases their risk of protecting themselves against predators.

With light sensitive cells in their eyes (rods and cones), vertebrates must adapt to light. The rods are more sensitive to green and blue light whereas the cones are greater at delivering sharp vision across the visual spectrum. Therefore, nocturnal animals avoid highly lit areas because the construction of their eyes slows their ability to adjust.



## Humans

While blue light can offer benefits to humans, such as improved cognitive function during waking hours, it is perhaps the most harmful light source, as it can interrupt circadian rhythms. Blue light can be the primary source of sleep pattern interruptions if the exposure is too high.

Colour temperature is a great indicator and can determine the amount of blue light content. For instance, if a 4000K street luminaire shines directly into residential areas, the high blue light content could directly affect sleep patterns of inhabitants.





# Adapting our Offering

We have a variety of products available within our range to help reduce our environmental impact and we work with governing bodies to provide the best solutions possible.

## The International Dark Skies Association

We've been working closely with the IDA to be awarded dark sky friendly seal of approval on several of our luminaires. This organisation focuses on reducing light pollution across the world.

They recommend a colour temperature lower than 3000K which is beneficial for not only light pollution but also for human and wildlife environments. We have a range of 2700K luminaires which include street, flood and wall mounted fixtures which all fall under the IDA's dark sky friendly status. The IDA logo appears on the relevant product pages.



## Circular Economy

A defining factor that stands the Kingfisher product range apart from other fittings on the market is the key focus on sustainability and the philosophy of 'repair, reuse and recycle'. Our luminaires are specifically designed to ensure almost all parts are repairable or replaceable, extending the life of your lighting system.



## Carbon Journey

Our carbon journey has been underway for a few years now, reviewing our processes and services to ensure minimal emissions are produced. In terms of carbon emissions, we currently hold Scope 1 and 2, and are working to achieve Scope 3, in order to become a Net Zero company by 2025.



# Lighting Design Services

**Since 1988, Kingfisher Lighting has produced lighting systems for many of the UK's largest companies using our world-class range of luminaires and accessories.**

Our Team of expert Lighting designers hold the highest standard of lighting design qualifications and training. With continuous development in this area, our designers use their wealth of knowledge and state-of-the-art software to create energy efficient solutions whilst maintaining the perfect aesthetic for each individual project.

Naturally, we maintain focus on the progression of the design techniques used in order to create innovative lighting designs for our client-base. The latest advancement in our portfolio of design technologies, is the production of 3D and VR design, capable of producing photorealistic visual representations.



Best served in the planning stages of largescale projects where standard lighting designs are not adequate to accurately represent the visual effects and lighting levels for non-lighting professionals. Using the combination of technical lighting designs and 3D visuals, we can perfectly portray the end result of the project, down to lighting effects, reflections and even compliance with environmental regulations.











# Kingfisher Controls

Part of the LUCECO group of companies

**Many projects require versatility within their schemes yet neglect the idea of a control system which could benefit their site with extended hours and reduced energy usage. However, Kingfisher Controls is a bespoke, low cost lighting system which can be tailored to meet any individual site needs.**

The expert team have a wealth of knowledge within creating a versatile solution which will benefit any site type including street, amenity, sports and high mast and more. The opportunities are endless through choosing this system.

Our technical experts can recommend a solution based on the location, dimming and controls needs as well as which command system is best placed on sites. They will then proceed to individually programming each luminaire before sending to a project to ensure an easier installation process.



# Bespoke Systems

Controller



Scene Switch



Collator



## The system can be used in several scenarios –

- Dim Lighting by DALI or 1-10V
- Switch Lighting on or off via Relay or Daylight sensor
- Scene Setting
- Part Night Dimming
- Remote Configuration and Diagnostics

## How does the system work?

We install a node or controller into each luminaire which is programmed for PIR, photocell and relay options as well as many more. When it comes to your system, you have two options - a switch system or a web-based interface.

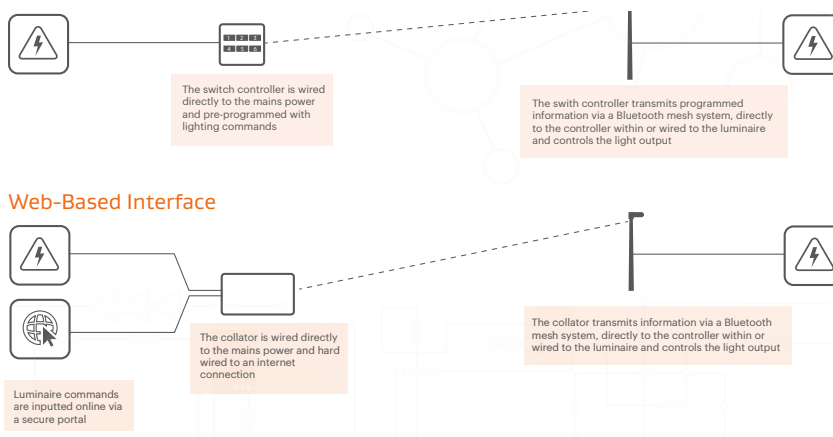
### Switch system

Directly connected to the mains, the lighting controller is programmed with the appropriate lighting commands. For the switch system, there is no need for an internet connection. The switch is pre-programmed so that a press of a button is all it takes to activate the command.

### Web-based interface

For system control, your web-based interface utilizes an online platform, such as a portal or app. The information is transmitted via a Bluetooth mesh system to a collator. For sites requiring continuous flexibility, it offers a variety of controls for events of all kinds as well as your standard set profiles.

The Kingfisher Controls system is the go-to system for any site and has been used on many large projects throughout the UK.



# Catenary Lighting

**Catenary lighting creates a clean transition between buildings and open spaces, and is an excellent technique for architectural applications to maximise space, enhance aesthetics and alleviate the need for columns and mounting accessories.**

Strategically placed between two structures, catenary lighting is a popular choice in many narrow city streets and Towns across the world and can be found in locations such as London, Milan and New York. These schemes offer clean lines as well as the flexibility to deliver lighting arrangements that may not be achievable through other mounting options.

Our comprehensive selection of catenary luminaires offers a variety of aesthetics, all with the highest built quality, optical performance and range of options and accessories.



## NAVAR Urban

Kingfisher's latest luminaire offers superior spacings and bespoke optical packages. The sleek circular profile of the luminaire lends itself perfectly to catenary applications, and with its flat-to-ground arrangement, alleviates the risk of obtrusive light and sky glow.



## Cono

One of Arcluce's finest, this luminaire has a unique conical shape offers an architectural aesthetic and is available with both comfort and performance options.



## ECORAYS

This circular luminaire comes with a hyper comfort optic patented by AEC Illuminazione. This sits perfectly alongside their stirrup mounted fittings to create a harmonious scheme.

With many more options available please refer to our quick reference guide to see which luminaires are available for catenary applications.





# Emergency Luminaires

Public safety being the key motivation, the requirement to install emergency lighting is becoming more prevalent for most new buildings and developments. This form of safety lighting is often avoided due to expectations of poor aesthetics or having to install more than one light source to cover all requirements on the project. We have developed an array of lighting fixtures with emergency capabilities, that do not compromise on form or function.

## Emergency Lighting Explained

In short, the main function of emergency lighting is to activate low level lighting, in the event of a power outage, ensuring safe passage to muster points. There are a number of types of emergency lighting available from maintenance to DALI self-test.

### Maintained

This form of emergency lighting is the most common and simply instructs the fitting to illuminate using an onboard battery and run at 3W-5W for 3 hours. This low level light promotes the safe passage of personnel to the safety zones. Within the fitting there is 'permanent live' and 'switch live' wiring. The switch live turns the fitting on and off at full power via a normal time clock or photocell, therefore is not operating during the daytime hours. The permanent live charges the onboard batteries and in the event of a power outage, will trigger the fitting to switch over into emergency mode.

### Self-Test

This operates in the same way as the maintained emergency packs, however with the addition of LED indicator within the system. This indicates whether the system is fully functional without the need to open up the fitting. If everything is working correctly the indicator will illuminate green. Whereas a red LED will indicate a fault in the system. This red light will indicate the exact source of the fault through sequential flashing. This system allows maintenance staff to diagnose faults quickly in order for the downtime of the emergency function to be minimal.

### DALI Self-Test

This is most complex system which works as the self-test emergency function but has the added advantage of being compatible with a DALI enabled CMS system. This allows maintenance personnel to be alerted and diagnose the fault from the central system. This in turn allows for quick and efficient maintenance and repairs to be actioned.

## Kingfisher Emergency Lighting

Unlike many other brands Kingfisher can offer a wide range of bollards, post top and wall mounted fittings with three hour emergency capabilities.

**Italo** – This Italian built luminaire offers high performance as well as a varying optic range boosting versatility within any site. Its reflector based system allows for extra comfort and security within your site and when combined with emergency capabilities it is the perfect allrounder.

**MOD 2.0 Urban** – This sleek luminaire is available in three fixing types and therefore suits many applications. It offers excellent performance as well as visual comfort for many sites creating a coherent and elegant aesthetic.

**Gothic** – This angular bollard offers a glare free projection as well as two way, three way and radial distributions. Also available with a range of colour temperatures, the bollard is perfect for illuminating walkways, gardens and any other public area.

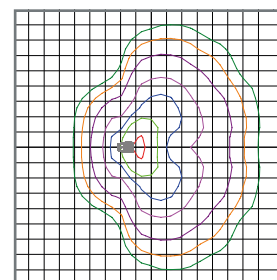
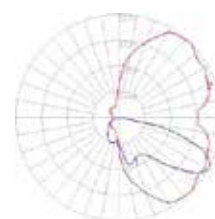
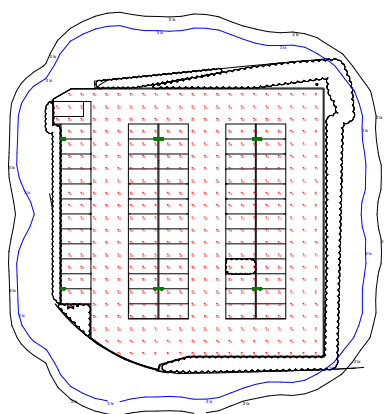
For a full range of emergency compatible luminaires refer to our quick reference guide on page 174





## SO5 Optic – Car Park and Area Optic

This open area optic produces an asymmetrical output ideal for illuminating car parks and service yards as well as other street and urban areas. With a peak intensity of 60°, the SO5 has a reflector-based system and provides a low glare comfortable output whilst maintaining a powerful performance.



Asymmetrical optic suitable for street, urban and open area lighting

BS5489 Carpark Standard	Typical Product Selections
5 Lux 25% Uniformity	1 Module
10 Lux 25% Uniformity	2 Modules
20 Lux 25% uniformity	3 Modules

### Compatible with:

ARTELYS  
ECORAYS  
Italo Series  
Master Series

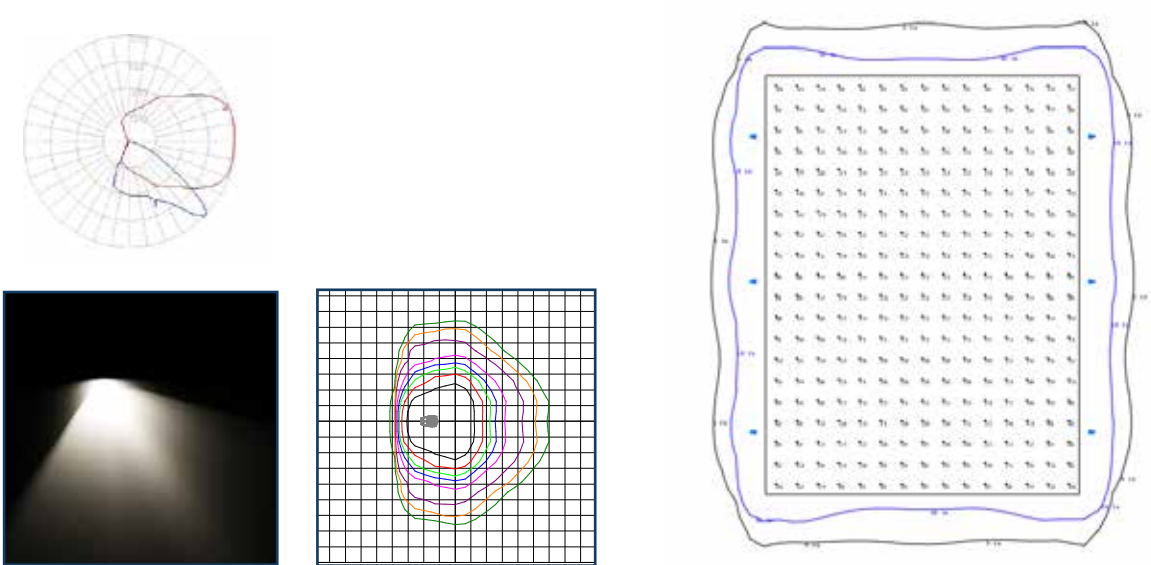
MOD 2.0 Series  
Revelampe  
Story  
Stylo



# ASC Optic – Service Yards



This comfort flood light optic produces an asymmetric distribution ideal for service yards and other open areas. With varying peak intensities of 50°, 60° and 70°, this optic also produces a low glare output thanks to its reflector technology system.



Asymmetrical optic for flood lighting

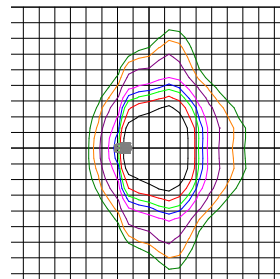
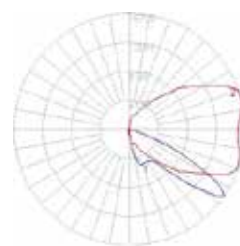
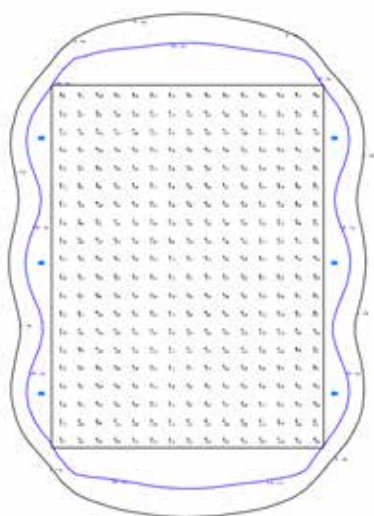
BS5489 Service Yards Standard	Typical Product Selections
20 Lux 25% Uniformity	2 Modules 700mAs
50 Lux 40% Uniformity	2 Modules 700mAs

### Compatible with:

MOD 2.0 Series  
Italo Series

## ASP Optic – Service Yards

This performance flood light optic produces an asymmetric distribution perfect for service yards and open area lighting. The optic has varying peak intensities beginning from 50° and ending with 70°. This reflector-based system creates a powerful output whilst maintaining visual comfort for any site.



Asymmetrical optic for flood lighting

BS5489 Service Yards Standards	Typical Product Selections
20 Lux 25% Uniformity	2 Modules 700mAs
50 Lux 40% Uniformity	2 Modules 700mAs

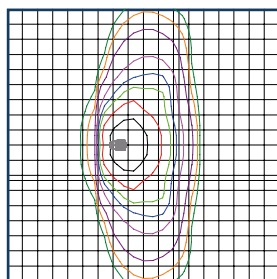
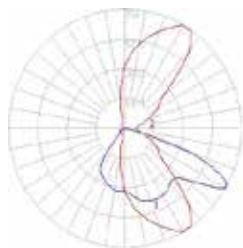
Compatible with:

MOD 2.0 Series  
Italo Series

# STE-M Optic – Road Optic



This asymmetrical optic produces a medium distribution perfect for illuminating standard road widths. The optic has a peak intensity of 60° and creates a comfortable environment for all site users due to its innovative system.



**Asymmetrical optic suitable for suburban areas**

BS5489 Roadway Standard	Typical Product Selections
5 Lux 25% Uniformity	1 Module
10 Lux 25% Uniformity	2 Modules
Adoptable Roadways BS EN 13201	Typical Product Selections
5 Lux 25% Uniformity	1 Module
10 Lux 25% Uniformity	2 Modules

**Compatible with:**

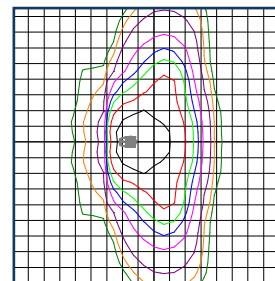
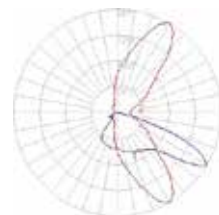
ARTELYS	MOD 2.0 Series
Italo Series	Revelampe
Master Series	Stylo





## STW Optic – Wide Road Optic

This optic has a wide asymmetric distribution suitable for illuminating standard road widths and suburban areas. With a peak intensity of 60°, this low glare optic provides a powerful output ideal for creating a comfortable environment on site.



Asymmetrical optic for wide urban and suburban road lighting.

BS5489 Roadway Standard	Typical Product Selections
5 Lux 25% Uniformity	1 Module
10 Lux 25% Uniformity	2 Modules
Adoptable Roadways BS EN 13201	Typical Product Selections
5 Lux 25% Uniformity	1 Module
10 Lux 25% Uniformity	2 Modules

Compatible with:

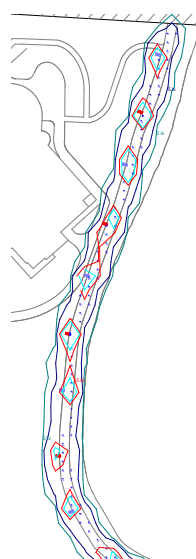
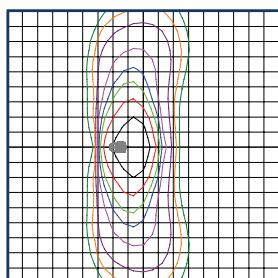
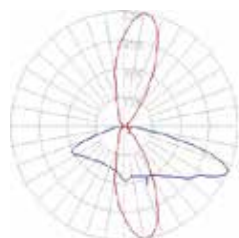
MOD 2.0 Series  
Revelampe  
Stylo

ARTELYS  
Italo Series  
Master Series

# SV Optic – Narrow Roadways / Pathways



This narrow optic provides an asymmetric distribution ideal for narrow pathways and roadways. The SV optics have a peak intensity of 60° and when paired with its advanced internal system creates the perfect illumination for many areas



Asymmetrical narrow optic for narrow urban streets and highway entrances and exits

BS5489 Roadway Standard	Typical Product Selections
5 Lux 25% Uniformity	1 Module
10 Lux 25% Uniformity	2 Modules

Adoptable Roadways BS EN 13201	Typical Product Selections
5 Lux 25% Uniformity	1 Module
10 Lux 25% Uniformity	2 Modules

Compatible with:

ARTELYS      Master Series  
ECORAYS      MOD 2.0 Series  
Italo Series      Stylo









# Amenity

**36 The NAVAR Series**

**42 Compass**

**44 ARTELYS**

**46 Italo 2 Urban**

**48 ECORAYS**

**50 MOD 2.0 URBAN**

**52 Revelampe**

**54 Villa II**

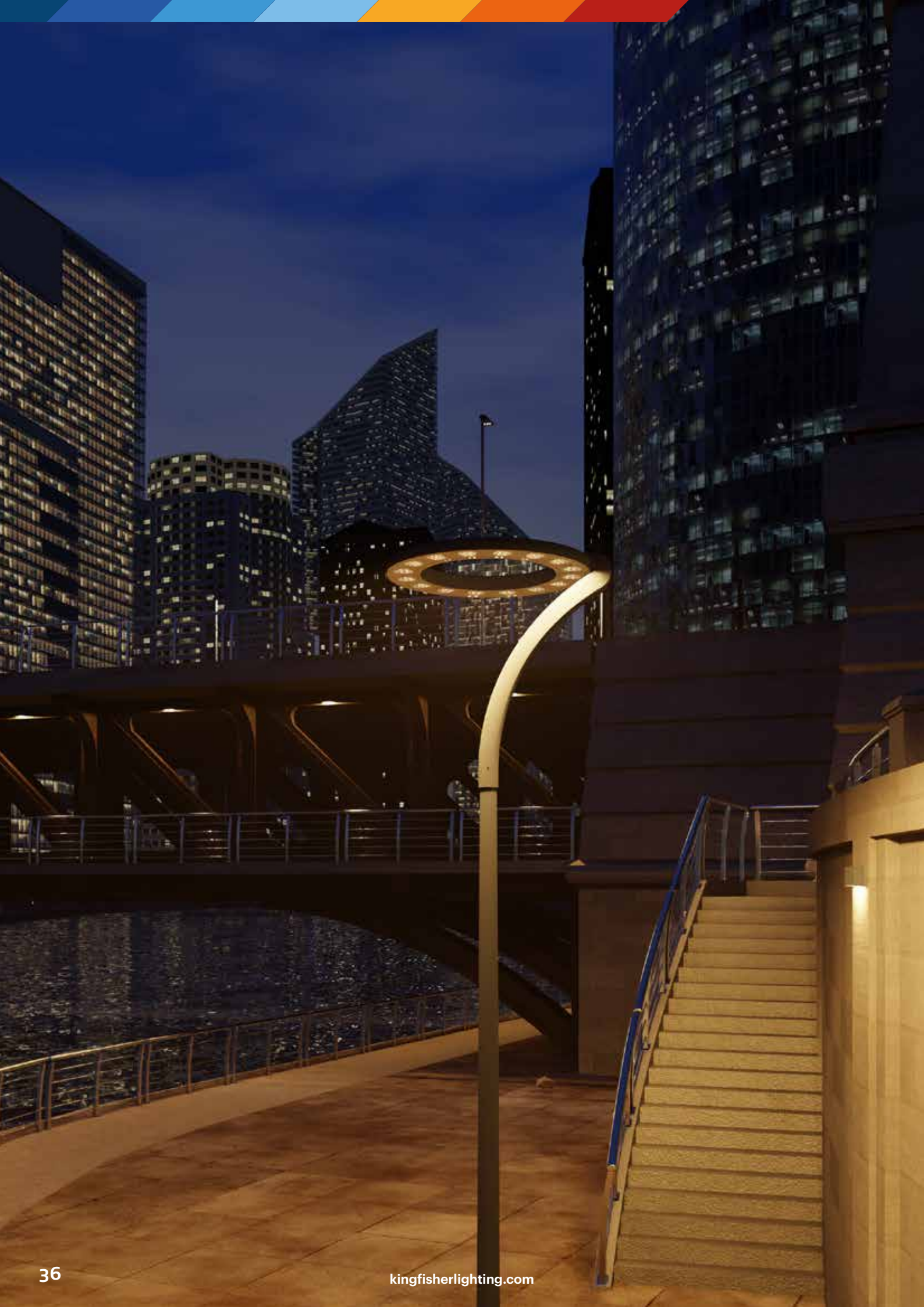
**56 Krane**

**58 Cono**

**60 Lunio**

**62 Zoya**







# NAVAR Urban

## Product Description

This versatile luminaire brings excellent power and performance with wide area distribution options. It comes with 4 bracketry options too so you can get the perfect mount for your site.

## Specification Text

The NAVAR Urban luminaire shall be manufactured from high-pressure die-cast aluminium and powder coated with a RAL 7016 Anthracite Grey marine grade finish. Its power outputs shall range from 62W - 158W. The luminaire shall deliver 101 - 139 lm/W with luminaire lumen outputs ranging from 7,429 - 18,501. The NAVAR Urban shall have a range of different optics to suit open areas and streets as well as a fully programmable DALI driver. Available in 2700K or 4000K, the luminaire shall be IK10 and IP66 rated with 3-hour integral emergency back-up options available. It shall have bracketry and catenary options ensuring versatility within a range of different projects and areas.

## Specification

Weight: 14.0 - 15.0kg

Windage: 0.071 - 0.082m<sup>2</sup>

Material: Die-cast Aluminium

Paint finish: RAL 7016 Anthracite

Grey Marine Finish

## Key Features

- 62.0W – 158.0W
- 7,429 – 18,501 Luminaire Lumens
- Efficacy up to 139.0 lm/W
- ULOR 0%
- 2700K & 4000K, CRI >70
- Lifetime 100,000hrs
- Bespoke Optical Design
- Marine Grade as Standard

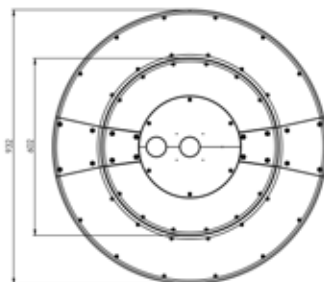
## Other Options

- Colour Temperatures: 2700K, 4000K
- Photocell
- Emergency
- Full Control Capability
- Bespoke Bracketry



**Scan for  
full product  
specification**

## Dimensions



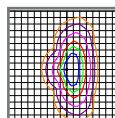
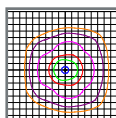
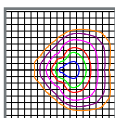
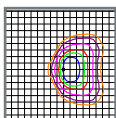
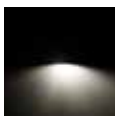
## Optics

**FWB70**

**FW70**

**SQ70**

**AY70**



# NAVAR Pro

## Product Description

Sleek with outstanding performance, the NAVAR Pro is our circular amenity luminaire guaranteed to bring a modern aesthetic to your site. It also has catenary and post top side entry options available.

## Specification Text

The NAVAR Pro shall be manufactured from high-pressure die-cast aluminium and powder coated with a RAL 7016 Anthracite Grey marine grade finish. Its power outputs shall range from 118W - 315W. The luminaire shall deliver 106 - 139 lm/W with luminaire lumen outputs ranging from 15,307 - 35,638. The NAVAR Pro shall have a range of different optics to suit open areas and streets as well as a fully programmable DALI driver. Available in 2700K or 4000K, the luminaire shall be IK10 and IP66 rated with bracketry options ensuring versatility within a range of different projects and areas.

## Specification

Weight: 20.0kg

Windage: 0.184m<sup>2</sup>

Material: Die-cast Aluminium

Paint finish: RAL 7016 Anthracite

Grey Marine Finish

## Key Features

- 118.0W – 315.0W
- 15,307 – 35,638 Luminaire Lumens
- Efficacy up to 139.0 lm/W
- ULOR 0%
- 2700K & 4000K, CRI >70
- Lifetime 100,000hrs
- Bespoke Optical Design
- Marine Grade as Standard

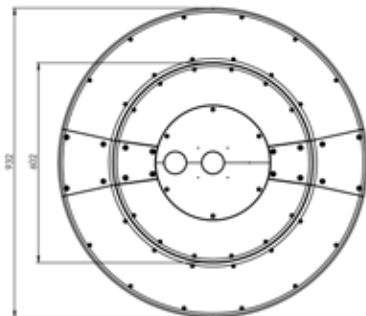


**Scan for  
full product  
specification**

## Other Options

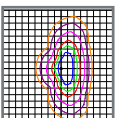
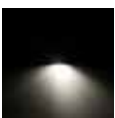
- Colour Temperatures: 2700K, 4000K
- Photocell
- Full Control Capability
- Bespoke Bracketry

## Dimensions

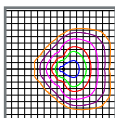
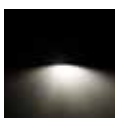


## Optics

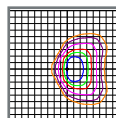
AY70



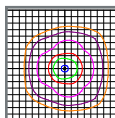
FW70



FWB70



SQ70



# NAVAR Urban Pro

## Product Description

The largest of the NAVAR series, the Urban Pro variant has an extremely powerful distribution and provides superior spacings for any open area projects. This luminaire also has 3 mounting options available to ensure the perfect aesthetic for your site.

## Specification Text

The NAVAR Urban Pro shall be manufactured from high-pressure die-cast aluminium and powder coated with a RAL 7016 Anthracite Grey marine grade finish. Its power outputs shall range from 180W - 473W. The luminaire shall deliver 104 - 144lm/W with luminaire lumen outputs ranging from 22,934 - 56,038. The NAVAR Pro shall have a range of different optics to suit open areas and streets as well as a fully programmable DALI driver. Available in 2700K or 4000K, the luminaire shall be IK10 and IP66 rated with bracketry options ensuring versatility within a range of different projects and areas.

## Specification

Weight: 26.0 - 30.5kg

Windage: 0.089 - 0.104m²

Material: Die-cast Aluminium

Paint finish: RAL 7016 Anthracite

Grey Marine Finish

## Key Features

- 180.0W - 473.0W
- 22,934 - 56,038 Luminaire Lumens
- Efficacy up to 144lm/W
- 2700K & 4000K, CRI >70
- ULOR 0%
- Lifetime 100,000hrs
- Bespoke Optical Design
- Marine Grade as Standard

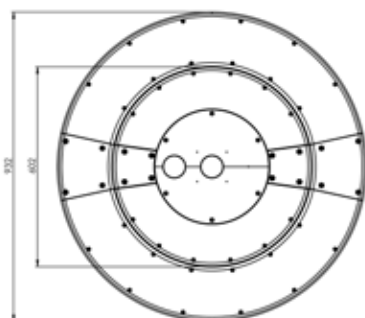
## Other Options

- Photocell
- Emergency
- Full Control Capability
- Bespoke Bracketry



**Scan for  
full product  
specification**

## Dimensions



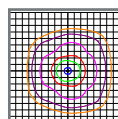
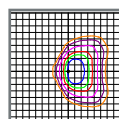
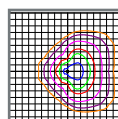
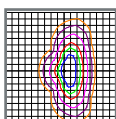
## Optics

AY70

FW70

FWB70

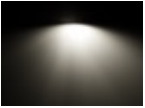
SQ70





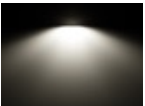
# Optics Explained

FW70



**Forward Throw Optic** – Perfect for perimeter lighting, this optic provides an asymmetric illumination with minimal back spill which is the ideal solution for boundary positioning.

SQ70



**Square Distribution Optic – 70°** - Designed by the Kingfisher HQ experts, the square optic offers maximised spacings between columns due to its open area distribution. This helps further enhance spaces and lower the amount of columns and fittings needed reducing the overall running costs.

AY70

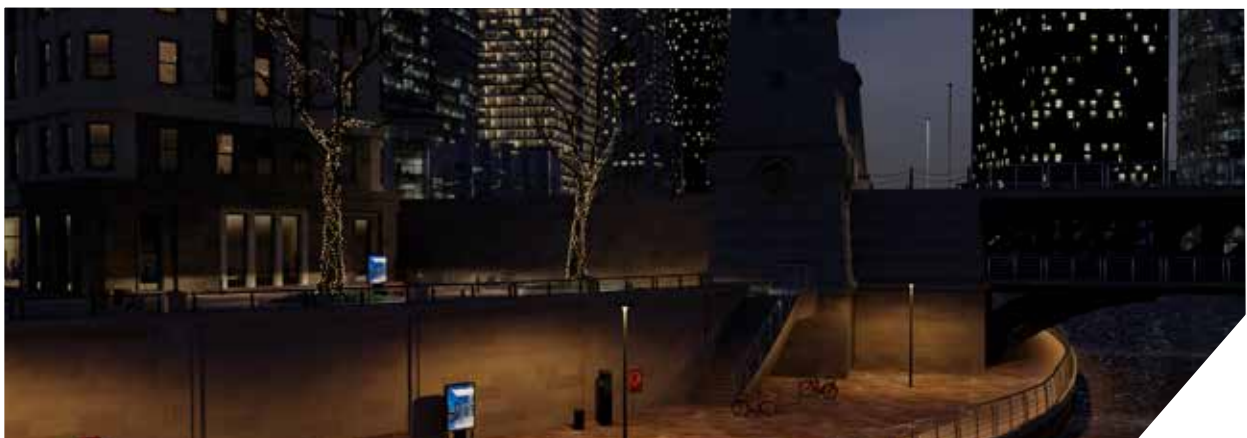


**Street Optic – 70°** - Ideal for illuminating roadways, pathways and narrow spaces this versatile optic when combined with our forward throw optic and create excellent uniformity across any site.

FWB70



**Forward Throw Optic c/w Back Spill Shield 70°** - Created with light intrusion in mind, this optic is ideal for any environment with extra caution towards ecological issues such as residential and wildlife areas. The optic has an integrated spill shield which allows for a better cut off of light.



# Mounting & Luminaire Options

Cantilever Bracket (CANT)

Urban (URB)  
Pro (PRO)  
Urban Pro (URBPRO)

Catenary Bracket (CAT)

Urban (URB)

Post Top Side Entry (PS)

Urban (URB)  
Pro (PRO)  
Urban Pro (URBPRO)

Central Post Top (CT)

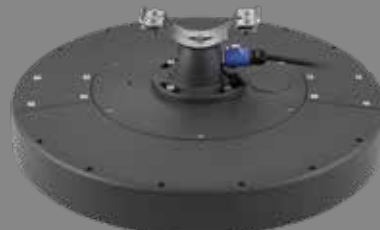
Urban (URB)  
Urban Pro (URBPRO)



NAVAR Urban Central Post Top



NAVAR Urban Pro Central Post Top



NAVAR Urban Catenary



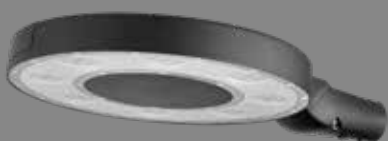
NAVAR Urban Cantilever



NAVAR Pro Cantilever



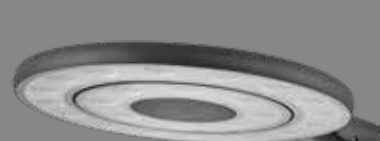
NAVAR Urban Pro Cantilever



NAVAR Urban Post Top Side Entry



NAVAR Pro Post Top Side Entry



NAVAR Urban Pro Post Top Side Entry





# Compass

## Product Description

This sleek luminaire is ideal for illuminating any urban or street environment. Available in post top, catenary, suspended and wall mounted versions, Compass is perfect for creating a harmonious scheme on site.

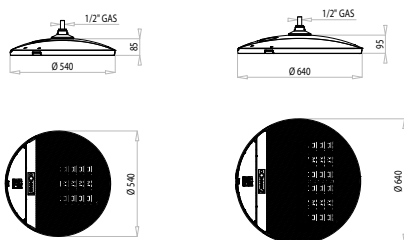
## Specification Text

The Compass luminaire shall be manufactured from high-pressure die-cast aluminium and powder coated with a graphite grey marine grade finish. It shall have Zhaga D4i Certification, with a power output of 28W - 152W and an efficacy from 125 - 140lm/W. It shall deliver 3,490 - 19,590 luminaire lumens. The fixture shall utilise reflector-based optics to create a comfortable low glare illumination with distributions to suit pathways, small, medium and wide roads. It shall have a fully programmable DALI driver. The luminaire shall come in 2700K, 3000K and 4000K and be IK08 and IP66 rated as well as come with a range of post top and side entry bracket options.

## Specification

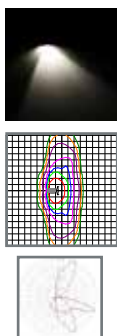
Weight: 10.5 - 13.5kg  
 Windage: Compass 1: 0.05-0.25m<sup>2</sup>  
 Compass 2: 0.06-0.32m<sup>2</sup>  
 Material: Die-cast Aluminium  
 Paint finish: Graphite Grey

## Dimensions



## Optics

STU-W



## Key Features

- 28.0W- 152.0W
- 3,490 - 19,590 Luminaire Lumens
- Efficiency up to 140.0 lm/W
- 4000K, CRI >70
- Lifetime >100,000hr, L90
- Marine Grade as Standard

## Mounting Options

- Post Top/Side Entry 48-60mm
- Wall Mount
- Suspended Mount 1/2" Gas Connection
- Catenary

## Dimming Options

- Constant Light Output
- Programmable
- Part Night Dimming
- Step Dimming

## Other Options

- Colour Temperature Options:  
2700K, 3000K, 4000K
- Paint Finish Options



Scan for  
full product  
specification









# ARTELYS

## Product Description

This Italian made luminaire offers excellent efficiency and high-performance. With a choice of optics and its elegant design, ARTELYS lends itself to a wide range of applications.

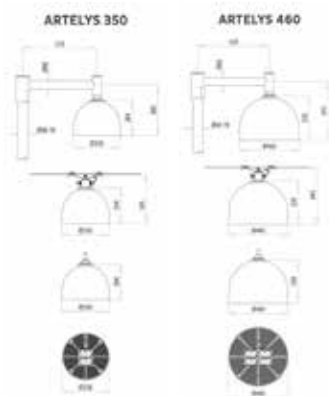
## Specification Text

The ARTELYS shall be manufactured from high-pressure die-cast aluminium and powder coated with a graphite grey marine grade finish. It shall have Zhaga D4i Certification, with a power output of 16 - 102W and an efficacy from 110 - 130 lm/W. It shall deliver 1,840 - 12,300 luminaire lumens. The ARTELYS shall utilise reflector-based optics to create a comfortable low glare illumination with distributions to suit pathways, roadways, and open areas such as car parks. The driver is fully DALI dimmable with standalone control options. The luminaire shall come in 2700K, 3000K and 4000K and be IK08 and IP66 rated with catenary and post top bracketry options.

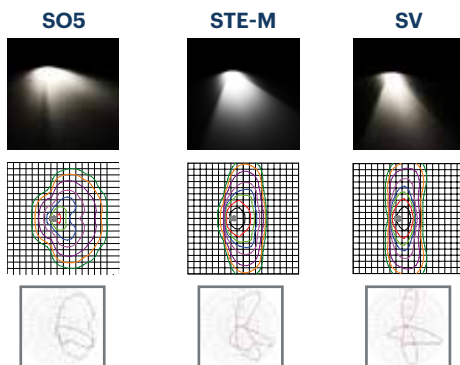
## Specification

Weight: 7.0 - 11.0kg  
 Windage: Artelys 350: 0.08-0.10m<sup>2</sup>  
 Artelys 460: 0.13-0.17m<sup>2</sup>  
 Material: Die-cast Aluminium  
 Paint finish: Graphite Grey

## Dimensions



## Optics



## Key Features

- 16.0W- 102.0W
- 1,840 - 12,300 Luminaire Lumens
- Efficiency up to 130.0 lm/W
- 4000K, CRI >70
- Lifetime >100,000hr, L90
- Marine Grade as Standard

## Mounting Options

- Suspended Mount 1/2" Gas Connection
- Catenary Mount

## Dimming Options

- Constant Light Output
- Programmable
- Part Night Dimming
- Step Dimming

## Other Options

- Colour Temperature Options:  
2700K, 3000K, 4000K
- Paint Finish Options
- Controls Options



Scan for  
full product  
specification







# Italo 2 Urban



Scan for  
full product  
specification

## Product Description

The Italo offers high performance functionality and comes with a wide optic selection suitable for any street, pathway or car park application.

## Specification Text

The Italo 2 Urban luminaire shall be manufactured from high-pressure die-cast aluminium and powder coated with a graphite grey marine grade finish. It shall have a power output ranging between 15 - 151W, with an efficacy from 109 - 132 lm/W. It shall produce 1,750 - 19,530 luminaire lumens. The Italo 2 Urban shall utilise reflector-based optics to create a comfortable low glare illumination with distributions to suit pathways, roadways, and open areas such as carparks. It shall have a fully programmable DALI driver. The luminaire shall come in 2700K, 3000K and 4000K and be IK09 and IP66 rated as well as come with a range of post top, side entry bracket and catenary options.

## Specification

Weight: 7.0kg  
Windage: 0.06-0.18m<sup>2</sup>  
Material: Die-cast Aluminium  
Paint finish: Semi-Gloss Satin Grey

## Key Features

- 15.0W - 151.0W
- 1,750 - 18,120 Luminaire Lumens
- Efficacy up to 132 lm/W
- 2700K, 3000K and 4000K, CRI >70
- Lifetime >100,000hr, L90
- Toolless Entry

## Mounting Options

- 76mm Advised for Side Entry Fixing
- 76mm for Post Top as well as Side Entry

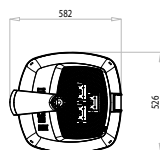
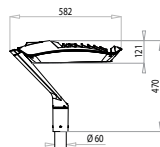
## Dimming Options

- Constant Light Output
- Programmable
- Part Night Dimming
- Step Dimming

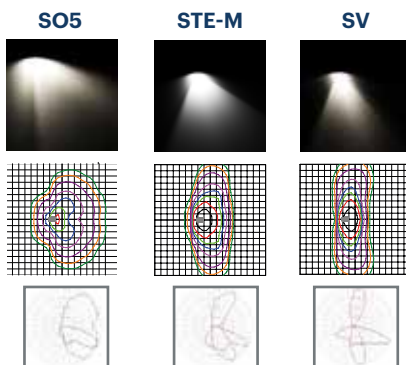
## Other Options

- Colour Temperature Options:  
2700K, 3000K and 4000K
- Photocell Options
- Emergency Options
- Paint Finish Options

## Dimensions



## Optics









# ECORAYS



Scan for  
full product  
specification

## Product Description

Create a stunning silhouette and a superb light output with this LED luminaire. Available post-top, side-entry or suspended.

## Specification Text

The ECORAY luminaire shall be manufactured from high-pressure die-cast aluminium and powder coated with a graphite grey marine grade finish. It shall have Zhaga D4i Certification, with a power output of 16 - 40W, with an efficacy from 106 - 121 lm/W. It shall deliver 1,790 - 4,720 luminaire lumens. The Eco Ray shall utilise reflector-based optics to create a comfortable low glare illumination with distributions to suit pathways, roadways, and open areas such as car parks. It shall have a fully programmable DALI driver. The luminaire shall come in 2700K, 3000K and 4000K and be IK09 and IP66 rated as well as come with catenary, cradle mounted, post top and side entry options available.

## Specification

Weight: 7.0kg  
Windage: 0.06-0.18m<sup>2</sup>  
Material: Die-cast Aluminium  
Paint finish: Graphite Grey

## Key Features

- 16.0W - 40.0W
- 1,790 - 4,720 Luminaire Lumens
- Efficacy up to 121 lm/W
- 4000K, CRI >70
- Lifetime >100,000hr, L90
- Marine Grade as Standard

## Mounting Options

- Stirrup Post Top 60-76mm
- Suspended version with fixing 1/2" gas
- Suspended version on bracket 60 - 76mm.

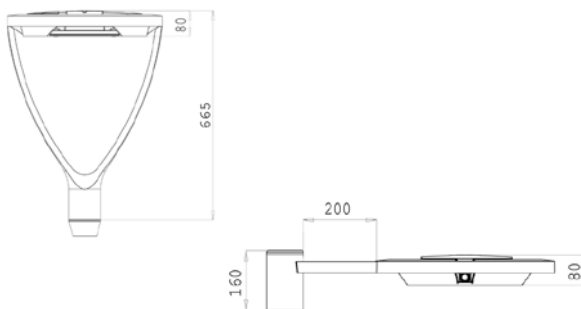
## Dimming Options

- Constant Light Output
- Programmable
- Part Night Dimming
- Step Dimming

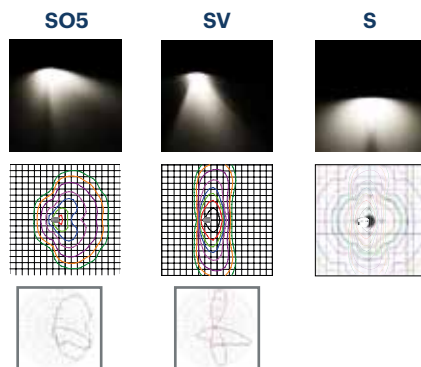
## Other Options

- Colour Temperature Options  
2700K, 3000K and 4000K
- Photocell Options
- Paint Finish Options

## Dimensions



## Optics









# MOD 2.0 URBAN

## Product Description

This diverse range of Italian made luminaires incorporates a modular bollard and tower, urban fitting and flood light option. With a variety of accessories to fit with full urban schemes, the MOD 2.0 series has everything needed for a growing cityscape.

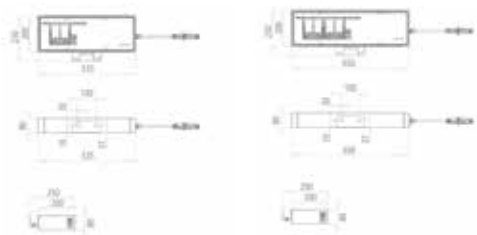
## Specification Text

The MOD 2.0 Urban shall be manufactured from high-pressure die-cast aluminium and powder coated with a graphite grey marine grade finish. It shall have a power output ranging from 16 - 102W, with an efficacy from 113 - 192 lm/W. It shall produce 1,800 - 12,580 luminaire lumens. The MOD 2.0 Urban shall utilise reflector-based optics to create a comfortable low glare illumination with distributions to suit pathways, roadways, and open areas such as car parks. It shall have a fully programmable DALI driver. The luminaire shall come in 2700K, 3000K and 4000K and be rated IK09 and IP66 with wall mounted (MOD 2.0 Pro), post top and length options ranging from 350mm - 950mm options.

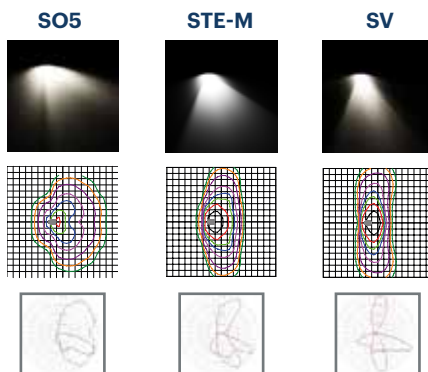
## Specification

Weight: 4.1 - 10.1kg  
Windage: 0.08-0.19m<sup>2</sup>  
Material: Die-cast Aluminium  
Paint finish: Graphite Grey

## Dimensions



## Optics



## Key Features

- 16.0W - 102.0W
- 1,880 - 12,580 Luminaire Lumens
- Efficacy up to 192.0 lm/W
- 4000K, CRI >70
- Lifetime >100,000hr, L90
- Marine Grade as Standard

## Mounting Options

- Post Top 76mm
- RX2 Fixation on pole
- Collar Fixing 102 - 127mm

## Dimming Options

- Constant Light Output
- Programmable
- Part Night Dimming
- Step Dimming

## Other Options

- Colour Temperature Options  
2700K, 3000K and 4000K
- Photocell Option
- Emergency Option
- Paint Finish Options



Scan for  
full product  
specification







# Revelampe

## Product Description

Revelampe is a classic design encompassing modern LED technology. The AEC Comfort Light Optic™ is an integral part of the design, making it ideal for public areas.

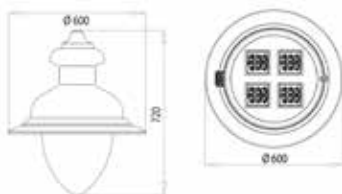
## Specification Text

The Revelampe shall be manufactured from high-pressure die-cast aluminium and powder coated with a graphite grey marine grade finish. It shall have a power output ranging from 16 - 102W, with an efficacy from 108 - 130 lm/W. It shall produce 1,840 - 12,300 luminaire lumens. The Revelampe shall utilise reflector-based optics to create a comfortable low glare illumination with distributions to suit pathways, roadways, and open areas such as carparks. It shall have a fully programmable DALI driver. The luminaire shall come in 2700K, 3000K and 4000K and be rated IK08 and IP66 with a range of glass drop bowl options. The Revelampe is a stylish and functional product perfectly suited to a range of different projects.

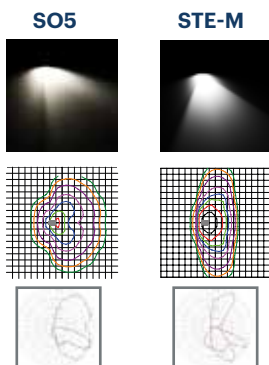
## Specification

Weight: 8.0-11.5kg  
 Windage: Revelampe LR55 0.09-0.25m²  
 Revelampe LL32: 0.12m² - 0.23m²  
 Material: Die-cast Aluminium  
 Paint finish: Graphite Grey

## Dimensions



## Optics



## Key Features

- 16.0W - 102.0W
- 1,840 - 12,300 Luminaire Lumens
- Efficacy up to 130.0 lm/W
- 4000K, CRI >70
- Lifetime >100,000hr, L90
- Marine Grade as Standard

## Mounting Options

- Suspended Mount 1/2" Gas Connection

## Dimming Options

- Constant Light Output
- Programmable
- Part Night Dimming
- Step Dimming

## Other Options

- Colour Temperature Options  
2700K, 3000K and 4000K
- Paint Finish Options



Scan for  
full product  
specification







# Villa II

## Product Description

The perfect lantern to add a heritage look to any scheme. Villa is available in LED as well as a range of colour temperatures to suit your applications.

## Specification Text

The Villa II shall be manufactured from high-pressure die-cast aluminium and be powder coated with a RAL 9005 Jet Black finish. It shall have a power output ranging from 30 – 60W with an efficacy of 116.0 lm/W. It shall produce 3,450 - 6,986 luminaire lumens. Available in 2700K and 4000K, Villa II is rated at IP66 and IK08.

## Specification

Weight: 9.0 - 9.1kg

Windage: 0.35m<sup>2</sup>

Material: Die-cast Aluminium

Paint finish: RAL9005 Jet Black

## Key Features

- 30.0 - 60.0W
- 3,450 - 6,986 Luminaire Lumens
- Efficacy up to 116.0 lm/W
- 2700K, 4000K, CRI >70
- Lifetime >100,000hr

## Mounting Options

- Post Top 60mm

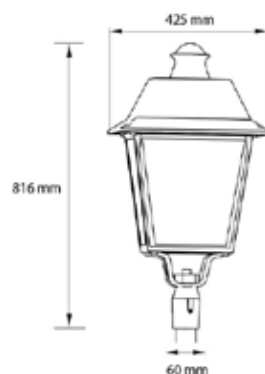
## Other Options

- Colour Temperature Option
- Photocell Option
- Emergency Option



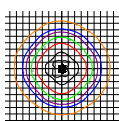
**Scan for  
full product  
specification**

## Dimensions



## Optics

Symmetrical 127°







# Krane



## Product Description

With a contemporary design, Krane offers an ultra modern aesthetic to any urban landscape. Available with a choice of output, colour temperature and low glare solutions.

## Specification Text

The Krane shall be manufactured from die-cast aluminium with an extruded aluminium body and powder coated with a graphite grey or aluminium silver finish. It shall have a power output of 39.0 - 81.0W, with an efficacy of 64lm/W. It shall produce 2,350 - 5,000lm luminaire lumens. The Krane is available with symmetrical optics for urban projects. Available in 3000K or 4000K, the luminaire shall be IK10 and IP66 rated.

## Specification

Weight: 7.3 - 12.2kg  
Windage: 15 - 0.25m<sup>2</sup>  
Material: Die-cast Aluminium  
Paint finish: Graphite Grey Finish

## Key Features

- 39.0 - 81.0W
- 2,350 - 5,000 Luminaire Lumens
- Efficacy up to 64 lm/W
- 3000K, 4000K, CRI >80
- Lifetime >50000hr, L80

## Mounting Options

- Post Top 60-76mm

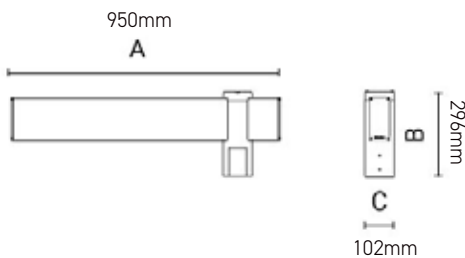
## Other Options

- Paint Finish Options

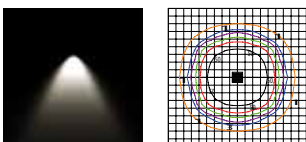


Scan for  
full product  
specification

## Dimensions



## Optics



Symmetrical Urban Optic







# Cono



## Product Description

A unique conical luminaire with an array of optics for the perfect distribution. An ideal solution for both post top and catenary applications including public realm and urban areas.

## Specification Text

The Cono shall be manufactured from die-cast aluminium with an extruded aluminium body and powder coated with a graphite grey or aluminium silver finish. It shall have a power output of 35W, with an efficacy from 71 - 117lm/W. It shall produce 2,500 - 4,100 luminaire lumens. The Cono shall be available with a range of optics for urban projects. Available in 3000K or 4000K, the luminaire shall be IK10 and IP66 rated with bracketry and catenary options available.

## Specification

Weight: 4.9 - 7.0kg  
Windage: 0.09 - 0.07m<sup>2</sup>  
Material: Die-cast Aluminium  
Paint finish: Graphite Grey Finish

## Key Features

- 35.0W
- 3,600 - 4,100 Luminaire Lumens
- Efficacy up to 117 lm/W
- 4000K, CRI >80
- Lifetime >60000hr, L80

## Mounting Options

- Post Top 60-76mm

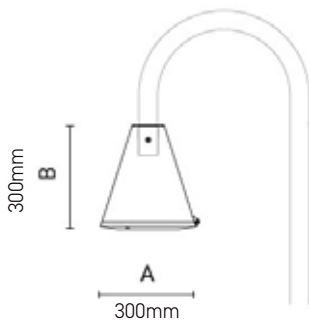
## Other Options

- Colour Temperature Options:  
2700K, 3000K and 4000K
- Paint Finish Options

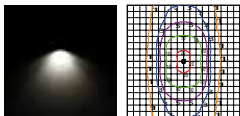


Scan for  
full product  
specification

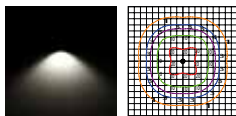
## Dimensions



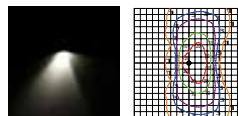
## Optics



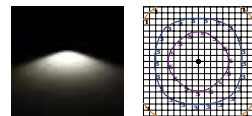
Catenary Street Pro



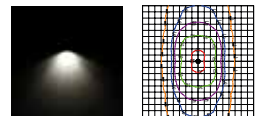
Catenary Urban  
Medium Pro



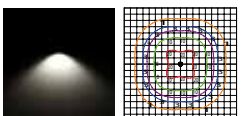
Catenary Street  
Performance



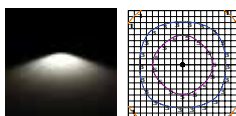
Catenary Urban Wide  
Pro



Street Pro



Urban Medium Pro



Urban Wide Pro







# Lunio



## Product Description

Lunio is an elegant amenity luminaire, which can be column or wall-mounted. It comes with a radial or 3-way distribution which makes it ideal for paths and parks as well as urban areas.

## Specification Text

The Lunio shall be manufactured from die-cast aluminium and powder coated with a graphite grey or aluminium silver finish. It shall have power outputs of 30 - 80W, with an efficacy from 81 - 105lm/W. It shall produce 2,200 - 7,100 luminaire lumens. The Lunio is available with a range of optics for urban projects. Available in 3000K or 4000K, the luminaire shall be IK09 and IP66 rated.

## Specification

Weight: 9.0kg  
Windage: 0.16m<sup>2</sup>  
Material: Die-cast Aluminium

## Key Features

- 30.0 - 80.0W
- 2,200 - 7,100 Luminaire Lumens
- Efficacy up to 91 lm/W
- 4000K, CRI >80
- Lifetime >60000hr, L80

## Mounting Options

- Post Top 60mm

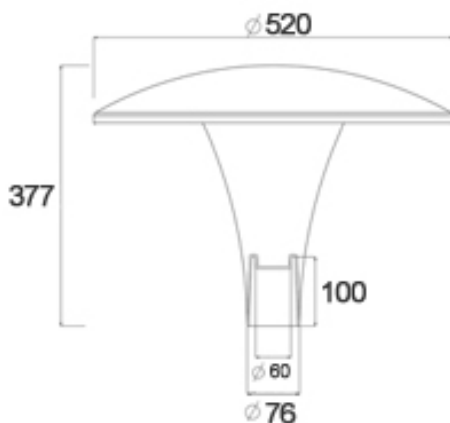
## Other Options

- Colour Temperature Options  
3000K, 4000K
- Paint Finish Options



Scan for  
full product  
specification

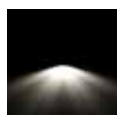
## Dimensions



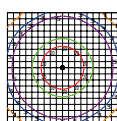
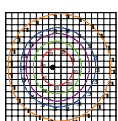
## Optics



Asymmetrical  
Street Optic



Symmetrical Street  
Optic









# Zoya

## Product Description

Zoya is an elegant luminaire with a radial distribution and added comfort options. It is suitable for many applications including urban environments.

## Specification Text

The Zoya shall be manufactured from die-cast aluminium and powder coated with a graphite grey or aluminium silver finish. It shall have a power output ranging between 81W, with an efficacy from 79-102 lm/W. It shall produce 3350-8,300 luminaire lumens. The Zoya is available with comfort and diffused options to create a more comfortable illumination. Available in 3000K or 4000K, the luminaire shall be IK10 and IP66 rated.

## Specification

Weight: 9.0kg  
Windage: 0.16m<sup>2</sup>  
Material: Die-cast Aluminium  
Paint finish: Graphite Grey Finish

 **Arcluce**



**Scan for  
full product  
specification**

## Key Features

- 81.0W
- 8,300 Luminaire Lumens
- Efficacy up to 102 lm/W
- 4000K, CRI >80
- Lifetime >60000hr, L80

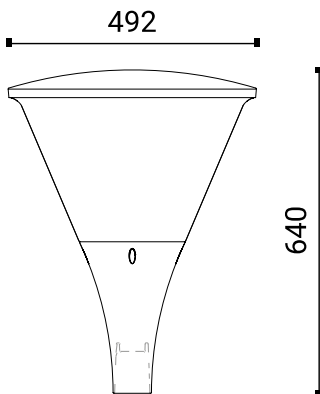
## Mounting Options

- Post Top 60-76mm

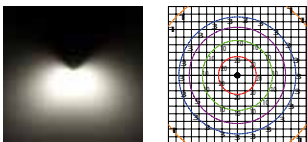
## Other Options

- Colour Temperature Options 3000K, 4000K
- Paint Finish Options
- Photocell Option

## Dimensions



## Optics



**Symmetrical Urban Optic**







# Streets

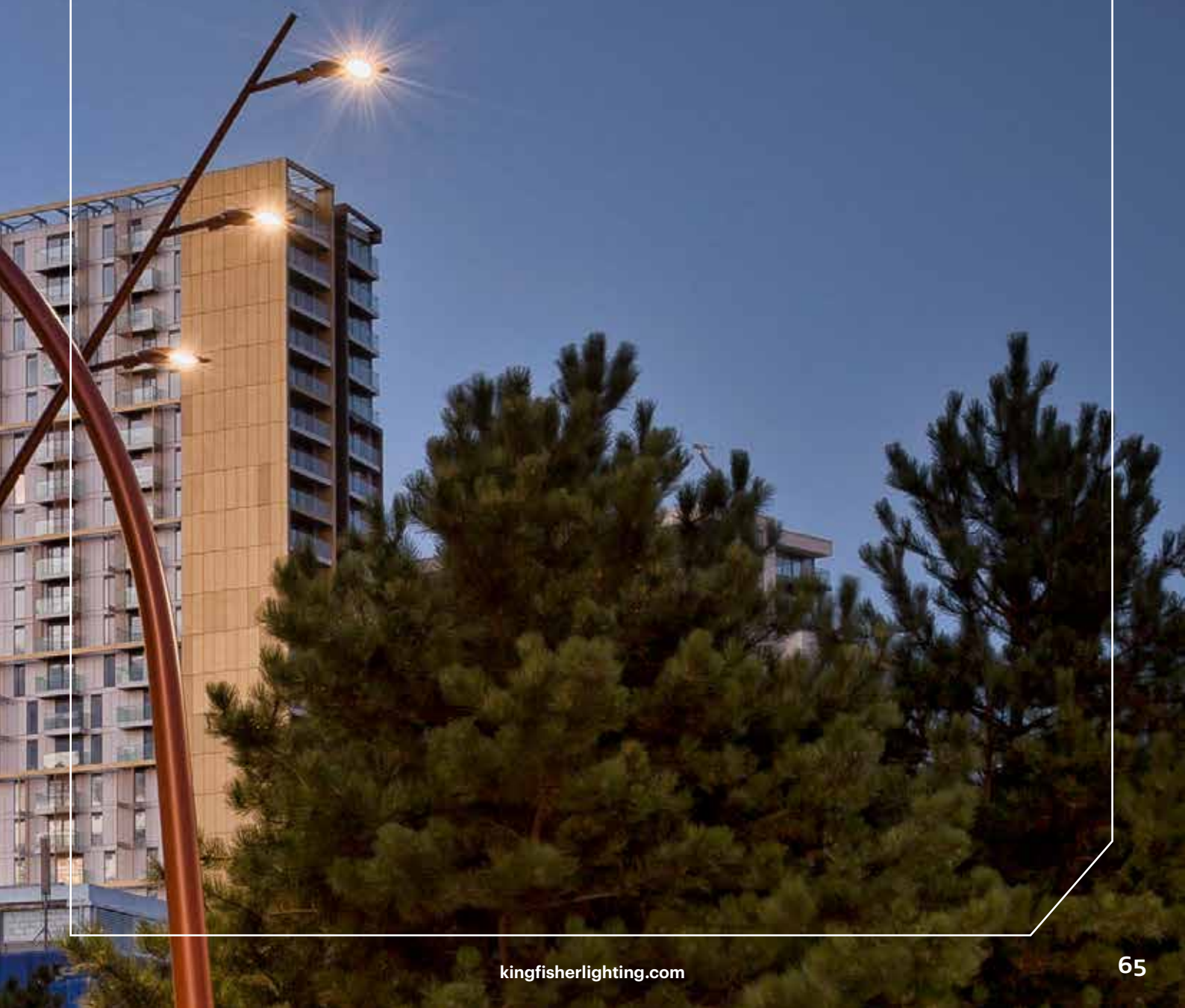
**66 STYLO**

**68 Master**

**70 Italo Street**

**72 Viva-City Pro**

**74 I-TRON**







# STYLO



Scan for  
full product  
specification

## Product Description

This award-winning luminaire is the perfect demonstration of sleek Italian design. Using reflector based technology the STYLO offers excellent efficiency without compromising on performance.

## Specification Text

The STYLO shall be manufactured from high-pressure die-cast aluminium. It shall be powder coated with a graphite grey marine grade finish. It shall have a power output ranging between 16 - 150W, with an efficacy from of up to 135 lm/W. It shall produce 1,880 - 19,040 luminaire lumens. The STYLO shall utilise reflector-based optics to create a comfortable low glare illumination with distributions to suit pathways, roadways, and open areas such as carparks. It shall have a fully programmable DALI driver. The luminaire shall come in 2700K, 3000K and 4000K and be rated IK08 and IP66. It shall have post top and side entry mounting options. The STYLO is a functional and aesthetically pleasing product, perfectly suited to a range of different projects.

## Specification

Weight: 10.0kg  
Windage: 0.09-0.25m<sup>2</sup>  
Material: Die-cast Aluminium  
Paint finish: Graphite Grey

## Key Features

- 16.0W - 150.0W
- 1,880- 19,040 Luminaire Lumens
- Efficacy up to 135 lm/W
- 2700K, 3000K, 4000K, CRI >70
- Lifetime >100,000hr, L90
- Toolless Entry
- Marine Grade as Standard

## Mounting Options

- Side Entry 42-60mm

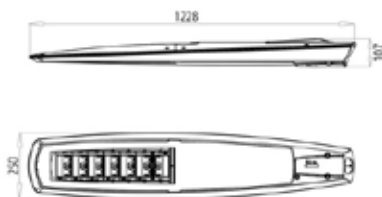
## Dimming Options

- Constant Light Output
- Programmable
- Part Night Dimming
- Step Dimming

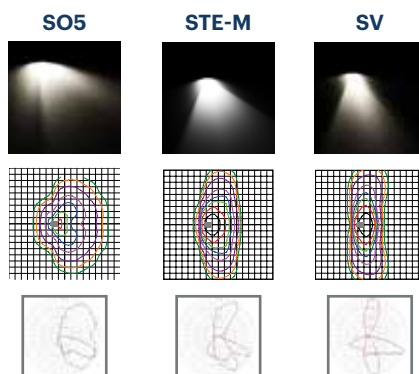
## Other Options

- Paint Finish Options

## Dimensions



## Optics







# Master Series

## Product Description

A distinctive LED street lantern suited to urban applications, it comes in two sizes with a large range of asymmetric optics.

## Specification Text

The Master series shall be manufactured from high-pressure die-cast aluminium. It shall be powder coated with a graphite grey marine grade finish. It shall have a power output ranging between 16 - 150W, with an efficacy from 115 - 135 lm/W. It shall produce 1,880 - 19,040 luminaire lumens. The Master shall utilise reflector-based optics to create a comfortable low glare illumination with distributions to suit pathways, roadways, and open areas such as carparks. It shall have a fully programmable DALI driver. The luminaire shall come in 2700K, 3000K and 4000K and be rated IK08 and IP66. It shall have post top and side entry mounting options. The Master 3 is a functional and aesthetically pleasing product perfectly suited to a range of different projects.

## Specification

Weight: 8.2 - 9.2kg  
 Windage: Master 6: 0.03 - 0.26m<sup>2</sup>  
 Master 3: 0.05 - 0.23m<sup>2</sup>  
 Material: Die-cast Aluminium  
 Paint finish: Graphite Grey

## Key Features

- 16.0W - 150.0W
- 1,880 - 19,040 Luminaire Lumens
- Efficacy up to 135 lm/W
- 2700K, 3000K, CRI >70
- Lifetime >100,000hr, L80
- Marine Grade as Standard

## Mounting Options

- Post Top 76mm

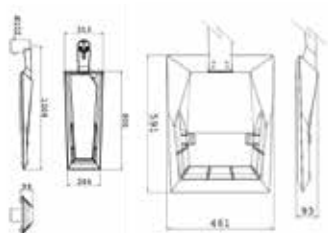
## Dimming Options

- Constant Light Output
- Programmable
- Part Night Dimming



Scan for  
full product  
specification

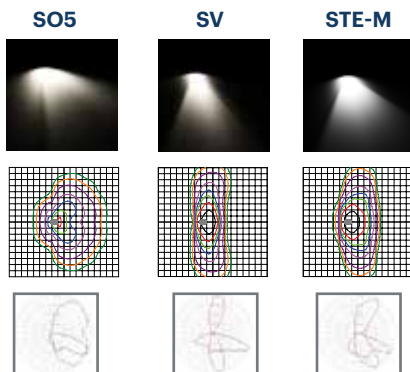
## Dimensions



Master 3

Master 6

## Optics







# Italo Street



Scan for  
full product  
specification

## Product Description

The Italo offers high performance functionality and comes with a wide optic selection suitable for any street, pathway or car park application.

## Specification Text

The Italo Street shall be manufactured from high-pressure die-cast aluminium with a graphite grey marine grade finish. It shall have Zhaga D4i Certification, with a power output ranging between 15W - 146W, with an efficacy from 104 - 132 lm/W. It shall produce 1,800 - 15,130 luminaire lumens. The Italo 1 shall utilise reflector-based optics to create a comfortable low glare illumination with distributions to suit pathways, roadways, carparks and asymmetric flood lighting optics to suit industrial applications. It shall have a fully programmable DALI driver. The luminaire shall come in 2700K, 3000K and 4000K and be IK09 and IP66 rated. It shall come with post top and side entry options.

## Specification

Weight: 7.0kg  
Windage: 0.06-0.18m<sup>2</sup>  
Material: Die-cast Aluminium  
Paint finish: Semi-Gloss Satin Grey

## Key Features

- 15.0W - 146.0W
- 1,800 - 15,130 Luminaire Lumens
- Efficacy up to 132.0 lm/W
- 2700K, 3000K and 4000K, CRI >70
- Lifetime >100,000hr, L90
- Toolless Entry
- Marine Grade as Standard

## Mounting Options

- Post Top / Side Entry 76mm

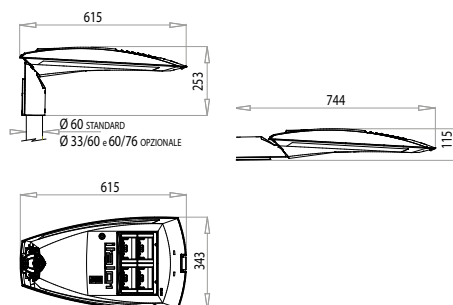
## Dimming Options

- Constant Light Output
- Programmable
- Part Night Dimming
- Step Dimming
- Wireless Dimming

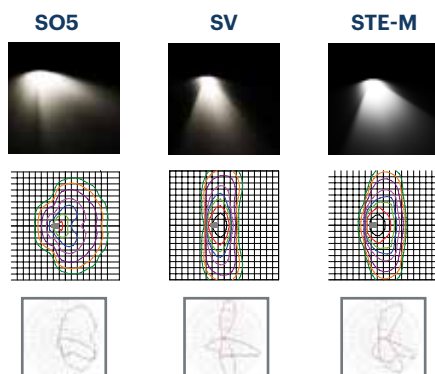
## Other Options

- Photocell Options
- Emergency Options
- Paint Finish Options

## Dimensions



## Optics









# Viva-City Pro

## Product Description

The Viva-City Pro is a slimline, modular street lantern with improved efficacy and output that incorporates asymmetrical optics including an area optic.

## Specification Text

The Viva-City Pro shall be manufactured from die-cast aluminium and powder coated in RAL 7016 Marine Grade finish. It shall have a power output ranging between 15-180W, with an efficacy of 89 - 150lm/W. The luminaire shall deliver 1,746 - 16,780 luminaire lumens. It shall have a fully programmable DALI driver. The Viva-City Pro has optics to suit pathway, road or open area applications with integral spill shield options to limit back spill. Available in 2700K or 4000K, the luminaire shall be IK08 and IP66 rated. It shall have photocell options available.

## Specification

Weight: 4.5 - 9.0kg Windage: 0.09m<sup>2</sup>  
Material: Die-cast Aluminium  
Paint finish: RAL7016 Anthracite

## Key Features

- 15.0W – 180W
- 2,079 - 24,840 Luminaire Lumens
- Efficacy up to 150.0 lm/W
- 2700K & 4000K, CRI >70
- Lifetime >100,000hr

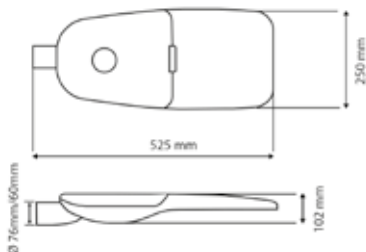
## Other Options

- Control Capabilities
- Dimmable Options

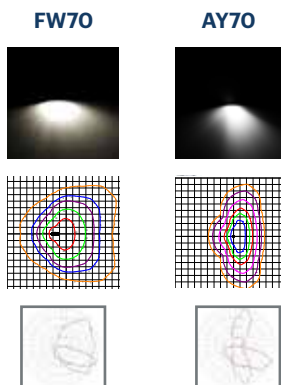


**Scan for  
full product  
specification**

## Dimensions



## Optics







# I-TRON

## Product Description

I-TRON is a high-performance street light. The modular lens and reflector based system with high-transparency tempered glass offers energy efficient, quality output.

## Specification Text

The I-TRON shall be manufactured from high-pressure die-cast aluminium and shall be powder coated with an anthracite grey marine grade finish. It shall have Zhaga D4i certification. It shall have a power output ranging between 21.5W - 75.5W, with an efficacy from 129 - 139 lm/W. It shall produce 2,765 - 9,984 luminaire lumens. The I-TRON shall utilise reflector-based optics to create a comfortable low glare illumination with distributions to suit pathway and street applications. It shall have a fully programmable DALI driver. The luminaire shall come in 2700K, 3000K and 4000K and be rated IK09 and IP66 with post top and side entry options. The I-TRON will suit many functional projects.

## Specification

Weight: 4.5kg  
Windage: 0.03-0.11m²  
Material: Die-cast Aluminium  
Paint finish: Anthracite Grey

## Key Features

- 21.5- 75.5W
- 2,765 - 9,984 Luminaire Lumens
- Efficacy up to 139.0 lm/W
- 2700K, 3000K, CRI >70
- Lifetime >100,000hr, L80
- Marine Grade as Standard

## Mounting Options

- Post Top 60mm, Side Entry 60mm

## Dimming Options

- Constant Light Output
- Programmable
- Part Night Dimming
- Step Dimming

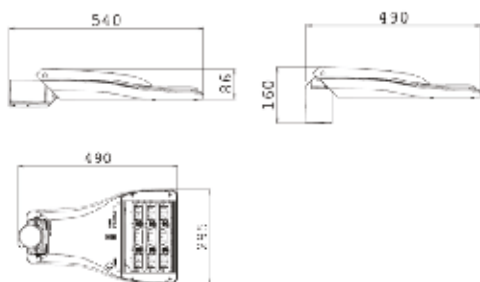
## Other Options

- Photocell Options
- Emergency Options
- Paint Finish Options



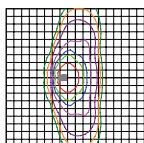
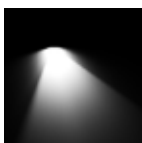
Scan for  
full product  
specification

## Dimensions

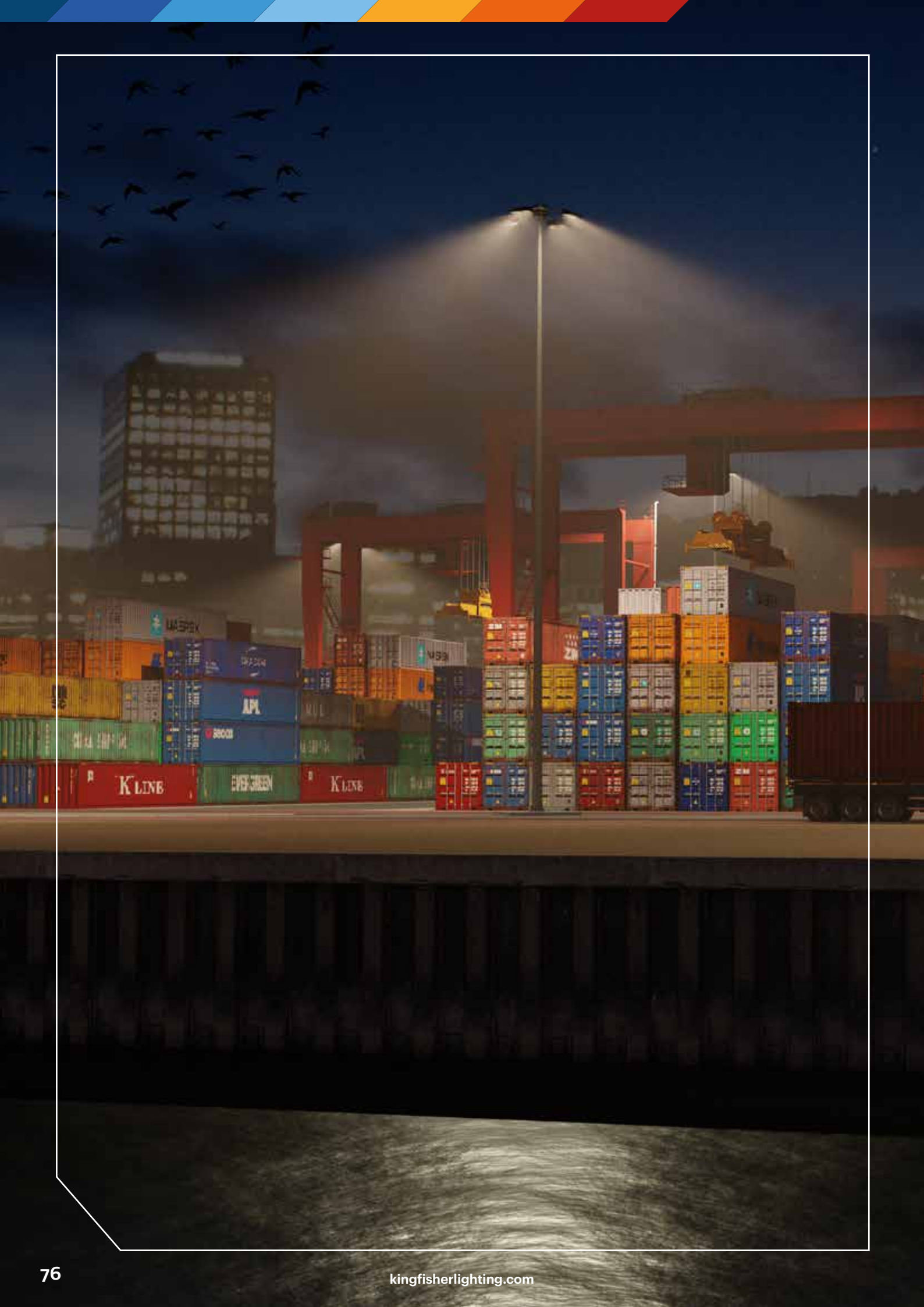


## Optics

STU-W







# Flood Lighting

**78 Zactis**

**80 Italo Flood**

**82 MOD 2.0 PRO**

**84 AMNIS Flood**

**86 AMNIS Match**

**88 Viva-City Flood**







# Zactis

## Product Description

Zactis is a high-performance flat-to-ground LED flood light perfect for sports, high mast and area applications. As well as facilitating easy installation and maintenance, the sleek, low-profile design, reduces the load together with decreasing windage.

## Specification Text

The Zactis shall be manufactured from die-cast aluminium and powder coated with a RAL 7016 Anthracite Grey marine grade finish. It shall have a power output ranging between 125 - 320W, with an efficacy from 126 - 138lm/W. It shall deliver 17,125 - 44,156 luminaire lumens. It shall have a fully programmable DALI driver. The Zactis shall have optics to suit pathway, road and open area applications. Available in 2700K or 4000K, the luminaire shall be IK08 and IP65 rated. It shall have photocell options available.

## Specification

Weight: 15.0 - 16.5kg  
Windage: 0.04m<sup>2</sup>  
Material: Die-cast Aluminium  
Paint finish: RAL7016 Anthracite  
Grey Marine Grade

## Key Features

- 125.0 - 320.0W
- 17,125 - 44,156 Luminaire Lumens
- Efficacy up to 138.0 lm/W
- 4000K, CRI >70
- Lifetime >100,000hr, L70

## Mounting Options

- Stirrup Mount

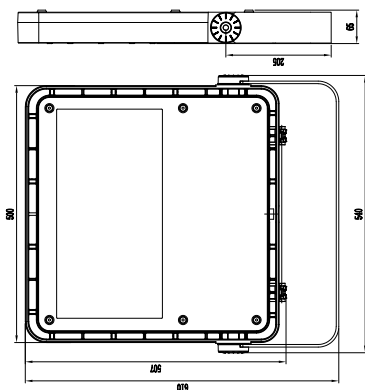
## Other Options

- Part Night Dimming
- Colour Temperature Options
- Photocell Option

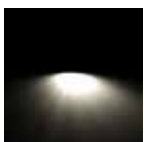


**Scan for  
full product  
specification**

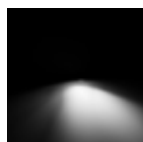
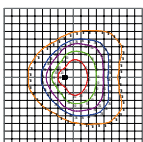
## Dimensions



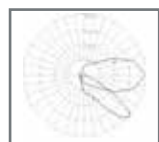
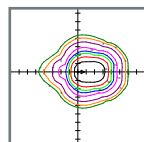
## Optics



**FW70**



**FL50**







# Italo Flood

## Product Description

Sleek and professional, Italo is one of our most popular Italian-built luminaires. Italo Flood would be perfect for beach walkways or even piers due to its marine grade finish as well as its versatile functionality.

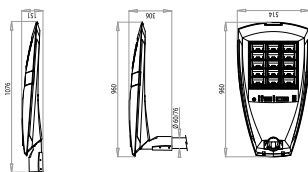
## Specification Text

The Italo Flood shall be manufactured from high-pressure die-cast aluminium and shall be powder coated with a graphite grey marine grade finish. It shall have Zhaga D4i certification. It shall have a power output ranging between 128W - 304W, with an efficacy from 123 - 134 lm/W. It shall produce 16,900 - 38,840 luminaire lumens. The Italo Flood shall utilise reflector-based optics to create a comfortable low glare illumination with distributions to suit pathways, roadways, carparks and asymmetric flood lighting optics to suit industrial applications. It shall have a fully programmable DALI driver. The luminaire shall come in 2700K, 3000K and 4000K and be rated IK09 and IP66 with post top and side entry options ensure the Italo Flood maximises on performance without compromising on style.

## Specification

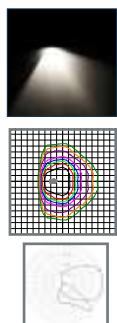
Weight: 19kg  
Windage: 0.1-0.4m<sup>2</sup>  
Material: Die-cast Aluminium  
Paint finish: Semi-Gloss Satin Grey

## Dimensions

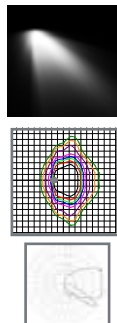


## Optics

### ASC



### ASP



## Key Features

- 128.0W - 304.0W
- 16,900 - 38,840 Luminaire Lumens
- Efficacy up to 134.0 lm/W
- 2700K, 3000K, 4000K, CRI >70
- Lifetime >100,000hr, L90

## Mounting Options

- Post Top 60-76mm
- Side Entry 76mm

## Dimming Options

- Constant Light Output
- Programmable
- Part Night Dimming

## Other Options

- Photocell Option



Scan for  
full product  
specification







# MOD 2.0 PRO



Scan for  
full product  
specification

## Product Description

This diverse range of Italian made luminaires incorporates a modular bollard and tower, urban fitting and flood light option. With a variety of accessories to fit with full urban schemes, the MOD 2.0 series has everything needed for a growing cityscape.

## Specification Text

The MOD 2.0 PRO shall be manufactured from high-pressure die-cast aluminium and powder coated with a graphite grey marine grade finish. It shall have a power output ranging from 16 - 102W, with an efficacy from 113 - 175 lm/W. It shall produce 1,880 - 12,550 luminaire lumens. The MOD 2.0 PRO shall utilise reflector-based optics to create a comfortable low glare illumination with distributions to suit pathways, roadways, and open areas such as carparks. It shall have a fully programmable DALI driver. The luminaire shall come in 2700K, 3000K and 4000K and be rated IK09 and IP66 with wall mounted options as well as other variants available. The luminaire shall range from 350mm - 950mm options.

## Specification

Weight: 6.6 - 8.0kg  
Windage: 0.08-0.19m<sup>2</sup>  
Material: Die-cast Aluminium  
Paint finish: Graphite Grey

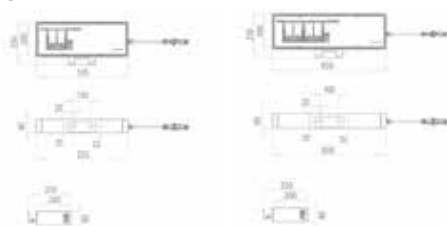
## Key Features

- 16.0W - 102.0W
- 1,880 - 12,550 Luminaire Lumens
- Efficacy up to 175.0 lm/W
- 3000K, 4000K, CRI >70
- Lifetime >100,000hr, L90
- Marine Grade as Standard

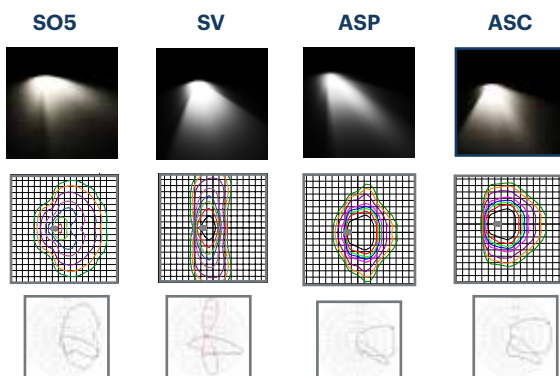
## Mounting Options

- Wall Mount with Integral Fixing Accessory

## Dimensions



## Optics







# AMNIS Flood

## Product Description

This powerful, high-performance luminaire was designed and engineered in the UK for optimum output and efficiency.

## Specification Text

The AMNIS Flood shall be manufactured from die-cast aluminium and powder coated in RAL 7016 Anthracite Grey marine grade finish. It shall have a power output ranging between 810 - 1350W, with an efficacy from 130 - 201lm/W. It shall deliver 118,000 - 187,000 lumen luminaires. It shall have a fully programmable DALI driver. The AMNIS Flood shall utilise reflector optics to provide further visual comfort with wide and forward throw optics. Available in 4000K or 2700K, the luminaire shall be IK08 and IP66 rated.

## Specification

Weight:	38.3 – 42.9kg
Windage:	0.06 - 0.09m <sup>2</sup>
Material:	Die-cast Aluminium
Paint finish:	RAL 7016 Anthracite Grey Marine Finish

## Key Features

- 900.0W – 1350.0W
- 118,000 – 187,000 Luminaire Lumens
- Efficacy up to 207 lm/W
- 2700K & 4000K, CRI >70
- Lifetime >100,000hr
- Asymmetrical
- Driver Options
- Marine Grade as Standard

## Other Options

- External & Integral Shields
- Control Capabilities
- Dimmable Options



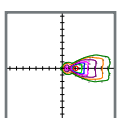
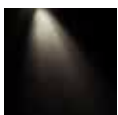
**Scan for  
full product  
specification**

## Dimensions

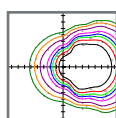


## Optics

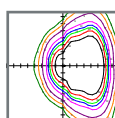
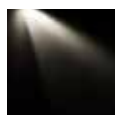
### High Mast NFT



### Sport NST



### Sport WST







# AMNIS Match

## Product Description

Experience power and performance with the AMNIS Match flood light. Part of the AMNIS series, this flood is a staple within the Kingfisher Sport range.

## Specification Text

The AMNIS Match shall be manufactured from die-cast aluminium and powder coated in RAL 7016 Anthracite Grey marine grade finish. It shall have a power output ranging between 450 - 665W, with an efficacy from 98-141lm/W. It shall deliver 44,000 - 94,000 luminaire lumens. It shall have a fully programmable DALI driver. The AMNIS Match shall utilise reflector optics to provide further visual comfort with wide and forward throw optics. Available in 4000K or 2700K, the luminaire shall be IK08 and IP66 rated.

## Specification

Weight:	16.7 – 23.7kg
Windage:	0.15m <sup>2</sup>
Material:	Die-cast Aluminium
Paint finish:	RAL 7016 Anthracite Grey Marine Finish

## Key Features

- 450.0W – 665.0W
- 59,000 – 94,000 Luminaire Lumens
- Efficacy up to 141.0 lm/W
- 2700K & 4000K, CRI >70
- Lifetime >100,000hr
- Asymmetrical
- Driver Options
- Marine Grade as Standard

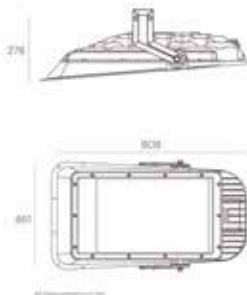
## Other Options

- External & Integral Shields
- Control Capabilities
- Dimmable Options



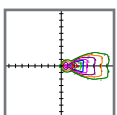
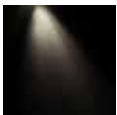
**Scan for  
full product  
specification**

## Dimensions

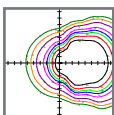
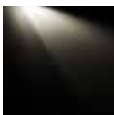


## Optics

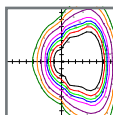
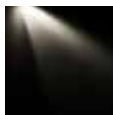
NFT



NST



WST







# Viva-City Flood

## Product Description

Part of the Viva-City family, the Viva-City Flood is a sleek, powerful luminaire with asymmetrical distribution.

## Specification Text

The Viva-City flood shall be manufactured from die-cast aluminium and powder coated in RAL 7016 Anthracite Grey Marine Grade Finish. It shall have a power output ranging between 60 - 120W, with an efficacy from 107 - 146lm/W. It shall deliver 8,390 - 16,780 luminaire lumens. It shall have a fully programmable DALI driver. The Viva City Flood shall have specialised optics to suit pathway, road or open area applications. Available in 2700K or 4000K, the luminaire shall be IK08 and IP66 rated with photocell options available.

## Specification

Weight:	7.5 – 8.1kg
Windage:	0.03m <sup>2</sup>
Material:	Die-cast Aluminium
Paint finish:	RAL 7016 Anthracite Grey Marine Finish

## Key Features

- 60W - 120W
- 8,390 - 16,780 Luminaire Lumens
- Efficacy up to 146.8lm/W
- 2700K & 4000K, CRI >70
- Lifetime >100,000hr

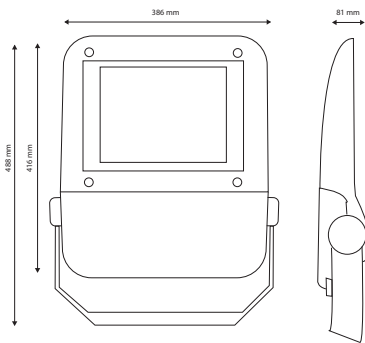
## Other Options

- Control Capabilities
- Dimmable Options



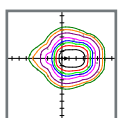
**Scan for  
full product  
specification**

## Dimensions

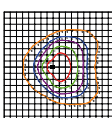


## Optics

FL50



FW70









## Architectural and Accent

**92 PIXOL Façade**

**94 Tula**

**96 Ellis**

**98 MIKO Wall**

**100 Krion**

**102 Tito Series**

**104 Duedieci**

**106 Dueventi**

**108 Napo**

**110 Dot**

**112 Moto**

**114 Pantheon**





# PIXOL Façade



## Product Description

The PIXOL Façade was created to suit both modern and historic applications. With many optic variations and colour temperature options, this luminaire can be combined with the Pixel range for a harmonious scheme.

## Specification Text

The PIXOL shall be manufactured from die-cast aluminium and powder coated with a graphite grey or aluminium silver finish. It shall have a power output ranging between 6.0 - 68.0W, with an efficacy from 15 - 97lm/W. It shall deliver 175 - 3,300 luminaire lumens. The PIXOL has a range of different beam angles and both one and two-way illuminations. Available in 3000K or 4000K, the luminaire shall be IK08 and IP66 rated.

## Specification

Weight: 1.3-3.7kg  
Material: Die-cast Aluminium  
Paint finish: Graphite Grey

## Key Features

- 6.0 - 68.0W
- 175 - 3,300 Luminaire Lumens
- Efficacy up to 97.0 lm/W
- 3000K, CRI >80
- Lifetime >60,000hr, L80



Scan for  
full product  
specification

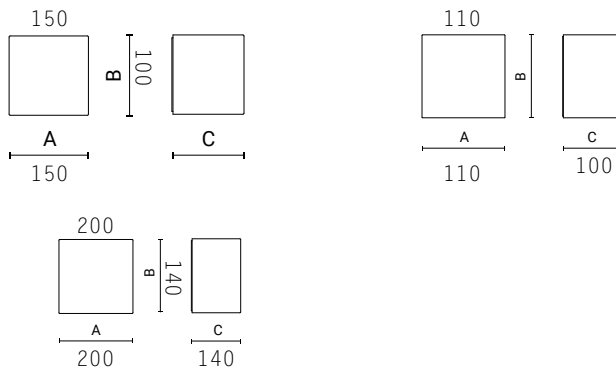
## Mounting options

- Wall Mount

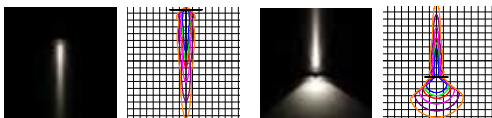
## Other Options

- Colour Temperature Options:  
3000K, 4000K
- Paint Finish Options

## Dimensions

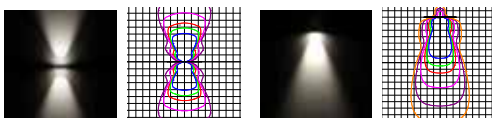


## Optics

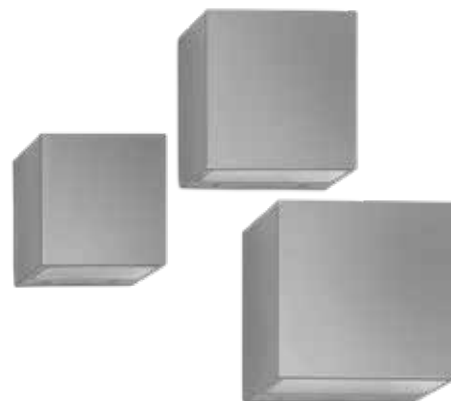


Elliptic 7° x 53°

Two Way Elliptic 7° x 53°



Two Way Wide Flood 41° x 62° Wide Flood 41° x 62°







# Tula



## Product Description

Tula, the small yet impactful wall luminaire ideal for architectural schemes. This versatile luminaire offers single or twin illumination and a range of mounting options.

## Specification Text

The Tula shall be manufactured from die-cast aluminium and powder coated with a graphite grey or aluminium silver finish. It shall have a power output ranging between 9 - 10W, with an efficacy from 55 - 100lm/W. It shall deliver 650 - 900 luminaire lumens. The Tula has a range of different beam angles and both one and two-way illumination. Available in 3000K or 4000K, the luminaire shall be IK07 and IP66 rated.

## Specification

Weight: 0.7 - 0.8kg  
 Windage: 0.02m²  
 Material: Die-cast Aluminium  
 Paint finish: Aluminium Silver Finish

## Key Features

- 9.0 - 10.0W
- 650 - 900 Luminaire Lumens
- Efficacy up to 100 lm/W
- 3000K, 4000K, CRI >80
- Lifetime >60000hr, L80

## Mounting Options

- Wall Mount
- Bollard Option

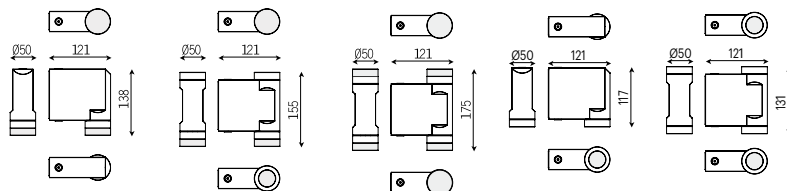
## Other Options

- Paint Finish Options

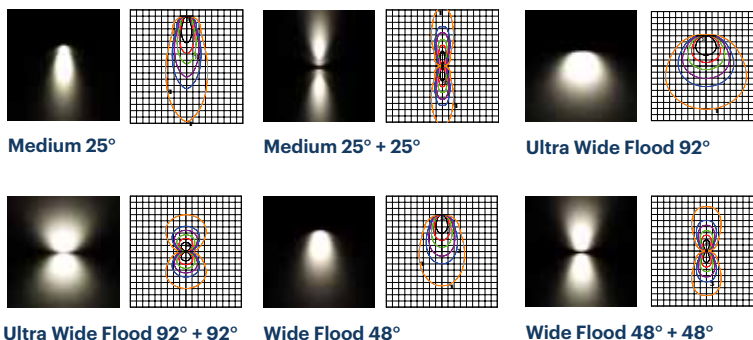


Scan for  
full product  
specification

## Dimensions



## Optics







# Ellis

## Product Description

Ellis is the façade luminaire designed to accentuate your architectural structures. With the option of one or two way illumination the Ellis series gives a stunning asymmetrical distribution.

## Specification Text

The Ellis shall be manufactured from die-cast aluminium and powder coated with a graphite grey or aluminium silver finish. It shall have a power output ranging between 7 - 40W, with an efficacy from 58 - 98lm/W. It shall deliver 575 - 3,900 luminaire lumens. The Ellis has a range of different beam angles and both one and two-way illumination. Available in 3000K or 4000K, the luminaire shall be IK07 and IP66.

## Specification

Weight: 0.9 - 5.5kg

Windage: 0.02m<sup>2</sup>

Material: Die-cast Aluminium

Paint finish: Aluminium Silver Finish



**Scan for  
full product  
specification**

## Key Features

- 7.0 - 40.0W
- 575 - 3,900 Luminaire Lumens
- Efficacy up to 98 lm/W
- 3000K, 4000K, CRI >80
- Lifetime >60,000hr, L80

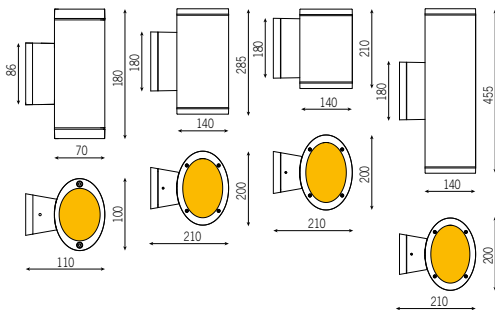
## Mounting Options

- Wall Mount

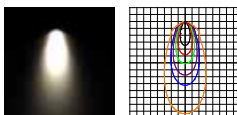
## Other Options

- Paint Finish Options

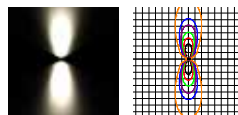
## Dimensions



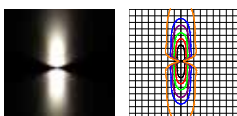
## Optics



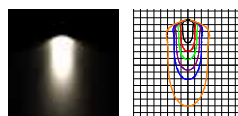
### Flood 37°



### Flood 37°+37°



### Medium 29°+29°



## Medium 29°







# MIKO Wall

## Product Description

MIKO is our stylish wall mounted fitting, offering a comfortable distribution. Pair with the MIKO bollard for a uniform aesthetic.

## Specification Text

The MIKO Wall shall be manufactured from die-cast aluminium and powder coated with a graphite grey or aluminium silver finish. It shall have a power output of 10W, with an efficacy of 80 - 87lm/W. It shall deliver 800 - 875 luminaire lumens. The MIKO Wall uses indirect light to illuminate the façade to create a comfortable illumination. Available in 3000K or 4000K, the luminaire shall be IK07 and IP66 rated.

## Specification

Weight: 1.5kg  
Windage: 0.03m<sup>2</sup>  
Material: Die-cast Aluminium  
Paint finish: Aluminium Silver Finish



Scan for  
full product  
specification

## Key Features

- 10.0W
- 800 Luminaire Lumens
- Efficacy up to 80 lm/W
- 3000K, 4000K, CRI >80
- Lifetime >60,000hr, L80

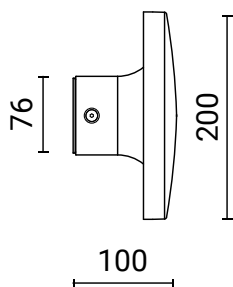
## Mounting Options

- Wall Mount

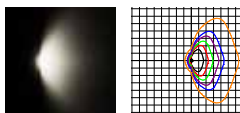
## Other Options

- Paint Finish Options

## Dimensions



## Optics



Radial







# Krion-In

## Product Description

Krion-In offers a sleek, modern design perfect for accenting architectural features. Installed flush, at ground level, this robust walk-over fitting can be used to create pathways, highlight scenes and offers excellent performance.

## Specification Text

The Krion shall be manufactured from Extruded aluminium and powder coated with a graphite grey or aluminium silver finish. It shall have a power output ranging from 39 - 81W, with an efficacy of 96 - 100lm/W. The luminaire shall deliver 3,900 - 7,700 luminaire lumens. The Krion is available with a range of different beam angles and sizes to suit a wide variety of projects. Available in 3000K, 4000K or RGBW, the luminaire shall be IK08 and IP66 rated.

## Specification

Weight: 2.4kg

Material: Die-cast Aluminium

Paint finish: Graphite Grey Finish



Scan for  
full product  
specification

## Key Features

- 39.0 - 81.0W
- 3,900 - 7,700 Luminaire Lumens
- Efficacy up to 100 lm/W
- 3000K, 4000K, RGBW, CRI >80
- Lifetime >60000hr, L80

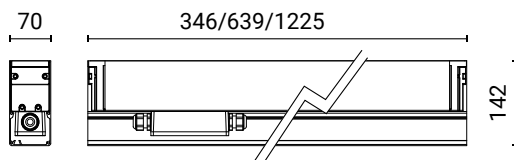
## Mounting Options

- Recessed Inground

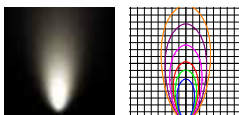
## Other Options

- Paint Finish Options

## Dimensions



## Optics



Flood 28°









# Tito Series



## Product Description

Tito is a compact stainless steel accent luminaire range which delivers perfect directional output. Highlight architectural features, buildings and create wall washes with this versatile mini flood light.

## Specification Text

The Tito shall be manufactured from 316L Stainless Steel. It shall have a power output ranging between 2 - 12W, with an efficacy of 75 - 113lm/W. It shall deliver 200 - 1,350 luminaire lumens. The Tito has a range of different beam angles to suit a wide variety of projects. Available in 3000K, 4000K or RGBW, the luminaire shall be IK10 and IP68 rated.

## Specification

Weight: 0.5 - 1.9kg  
Windage: 0.01m²  
Material: 316L Stainless Steel

## Key Features

- 2.0 - 12.0W
- 200 - 1,350 Luminaire Lumens
- Efficacy up to 113 lm/W
- 3000, 4000K, CRI >80
- Lifetime >60000hr, L80

## Mounting Options

- Stirrup Mount

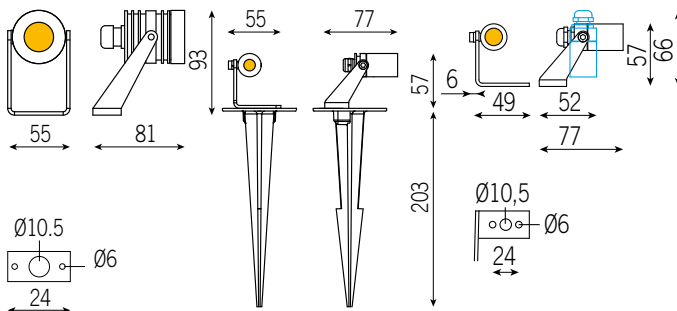
## Other Options

- Paint Finish Options



Scan for  
full product  
specification

## Dimensions



## Optics



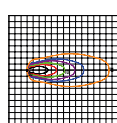
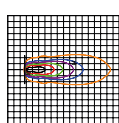
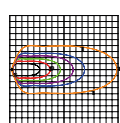
Flood 30°



Medium 25°



Medium 25°







# Duedieci

## Product Description

Duedieci, the small yet powerful flood suitable for a variety of outdoor spaces. Perfect for feature highlighting and accenting architecture.

## Specification Text

The Duedieci shall be manufactured from die-cast aluminium and powder coated with a graphite grey or aluminium silver finish. It shall have a power output ranging between 10 - 21W, the luminaire delivers 75 - 88lm/W, lumen outputs range from 750 - 1,850lm. The Duedieci has a range of beam angles as well as a fully adjustable head for flexibility. Available in 3000K, 4000K or RGBW, the luminaire shall be IK09 and IP66 rated.

## Specification

Weight: 1.9kg  
Windage: 0.04m<sup>2</sup>  
Material: Die-cast Aluminium  
Paint finish: Graphite Grey Finish

 **Arcluce**

## Key Features

- 10.0 - 21.0W
- 750 - 1,850 Luminaire Lumens
- Efficacy up to 88 lm/W
- 3000K, 4000K, CRI >80
- Lifetime >60000hr, L80



**Scan for  
full product  
specification**

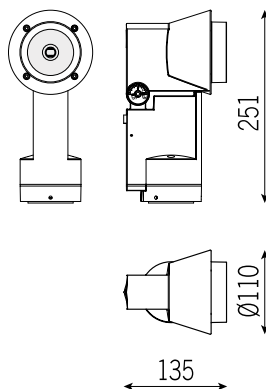
## Mounting Options

- Floor and Wall Mount

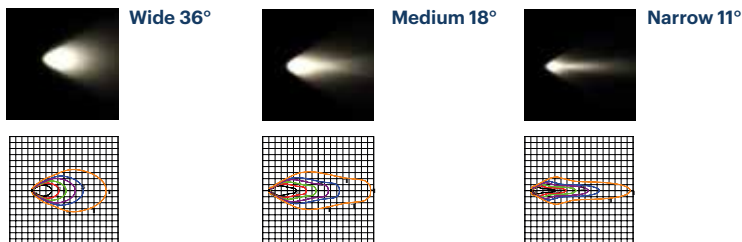
## Other Options

- Paint Finish Options

## Dimensions



## Optics









# Dueventi



## Product Description

Sleek and powerful, Dueventi is the ideal solution to highlight architectural features. This versatile luminaire can be use floor, wall or even column mounted to create stunning visual effects, while providing visual comfort to all.

## Specification Text

The Dueventi shall be manufactured from die-cast aluminium and powder coated with a graphite grey or aluminium silver finish. It shall have a power output ranging between 31 - 58W, with an efficacy from 87 - 116lm/W. The luminaire shall deliver 5,050 - 6,750 luminaire lumens. The Dueventi has a range of beam angles as well as a fully adjustable head for flexibility. Available in 3000K, 4000K or RGBW, the luminaire shall be IK10 and IP66 rated.

## Specification

Weight: 6.5kg  
Windage: 0.08m<sup>2</sup>  
Material: Die-cast Aluminium  
Paint finish: Graphite Grey Finish

## Key Features

- 31W - 58W
- 5,050 - 6750 Luminaire Lumens
- Efficacy up to 116 lm/W
- 3000K, 4000K, CRI >80
- Lifetime >60000hr, L80



Scan for  
full product  
specification

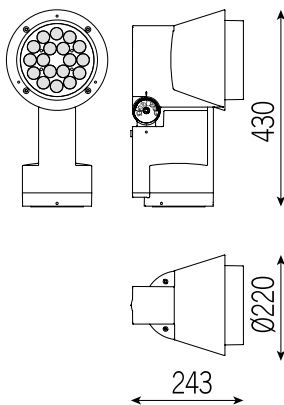
## Mounting Options

- Floor and Wall Mount

## Other Options

- Paint Finish Options

## Dimensions



## Optics



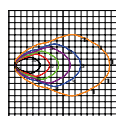
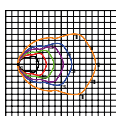
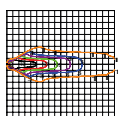
Medium 16°



Very Wide Flood 61°



Wide 42°







# Napo

## Product Description

Napo is a small, elegant luminaire perfect for adding accent lighting to any area.

## Specification Text

The Napo shall be manufactured from turned aluminium and powder coated with a graphite grey, aluminium silver or white finish. It shall have a power output ranging from 0.4 - 5W, with an efficacy of 50lm/W. The luminaire shall deliver 250 luminaire lumens. Available in 3000K, 4000K or RGB, the luminaire shall be IK07 and IP66 rated.

## Specification

Weight: 0.3kg

Material: Die-cast Aluminium

Paint finish: White Finish

 **Arcluce**

## Key Features

- 5.0W
- 250 Luminaire Lumens
- Efficacy up to 50 lm/W
- 3000K, 4000K, CRI >80
- Lifetime >60,000hr, L80

## Mounting Options

- Ceiling and Wall Mount

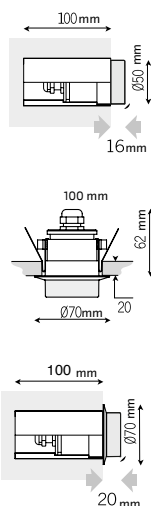
## Other Options

- Paint Finish Options

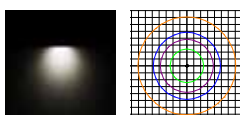


**Scan for  
full product  
specification**

## Dimensions



## Optics



**Very Wide Flood 80°**







# Dot

## Product Description

Dot, a classic wall luminaire guaranteeing visual comfort for your schemes.

## Specification Text

The Dot shall be manufactured from die-cast aluminium and powder coated with a graphite grey, aluminium silver or white finish. It shall have a power output of 20W, with an efficacy of 63lm/W. The luminaire shall deliver 1,260 luminaire lumens. Available in 3000K or 4000K, the luminaire shall be IK08 and IP65 rated.

## Specification

Weight: 2.4kg

Material: Die-cast Aluminium

Paint finish: White Finish

 **Arcluce**



**Scan for  
full product  
specification**

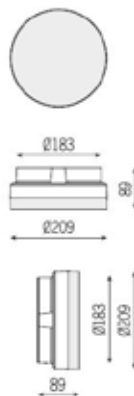
## Key Features

- 20.0W
- 1,200 - 1,260 Luminaire Lumens
- Efficacy up to 63 lm/W
- 3000k 4000K, CRI >80
- Lifetime >60000hr, L80
- Symmetrical
- Paint finish options
- Driver included

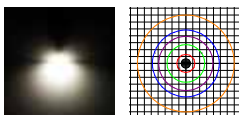
## Mounting Options

- Ceiling and Wall Mount

## Dimensions



## Optics



**Symmetrical Wide 130°**









# Moto



## Product Description

Moto is a versatile flood light with a big offering. Available in a range of powerful optics, colour temperatures and RGBW options, this fixture is perfect for creating powerful lighting scenes and effects.

## Specification Text

The Moto shall be manufactured from die-cast aluminium and powder coated with a graphite grey or aluminium silver finish. It shall have a power output ranging between 35 - 76W, with an efficacy of 36-116lm/W. The luminaire shall deliver 2,800 - 8,800 luminaire lumens. The Moto has a range of beam angles, up to 6 Moto luminaires can be joined to achieve a greater lumen output. Available in 3000K, 4000K or RGBW, the luminaire shall be IK10 and IP66 rated.

## Specification

Weight: 6.0kg  
Windage: 0.04m²  
Material: Die-cast Aluminium  
Paint finish: Graphite Grey Finish

## Key Features

- 35.0W - 76.0
- 7,050 - 8,800 Luminaire Lumens
- Efficacy up to 116 lm/W
- 3000K, 4000K, RGBW, CRI >80
- Lifetime >60,000hr, L80



Scan for  
full product  
specification

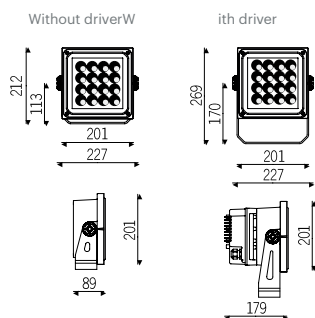
## Mounting Options

- Floor, Wall or Ceiling Mount

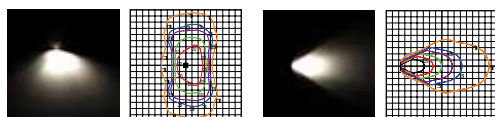
## Other Options

- Paint Finish Options

## Dimensions

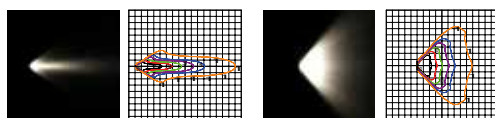


## Optics



Asymmetric Imax=40°

Flood 37°



Narrow 12°

Ultra Wide Flood 99°







# Pantheon



## Product Description

The powerful flood light is available in an array of optics and versatile mounting options to deliver different lighting effects.

## Specification Text

The Pantheon shall be manufactured from die-cast aluminium and powder coated with a graphite grey or aluminium silver finish. It shall have a power output ranging between 41 - 79W, with an efficacy from 80 - 106lm/W. The luminaire shall deliver 3,250 - 8,400 luminaire lumens. The Pantheon has a range of beam angles to suit a variety of projects. Available in 3000K or 4000K, the luminaire shall be IK08 and IP67 rated.

## Specification

Weight: 9.7kg  
Windage: 0.09m<sup>2</sup>  
Material: Die-cast Aluminium  
Paint finish: Aluminium Silver Finish

## Key Features

- 41.0 - 79.0W
- 3,250 - 8,400 Luminaire Lumens
- Efficacy up to 106 lm/W
- 3000K, 4000K, CRI >80
- Lifetime >60000hr, L80

## Mounting Options

- Stirrup Mount

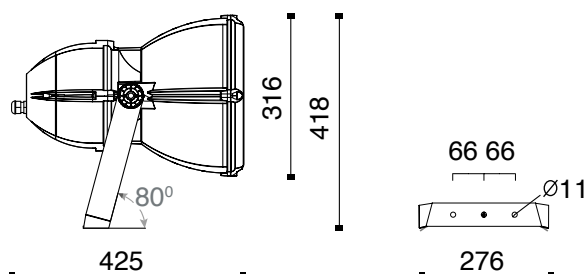
## Other Options

- Paint Finish Options

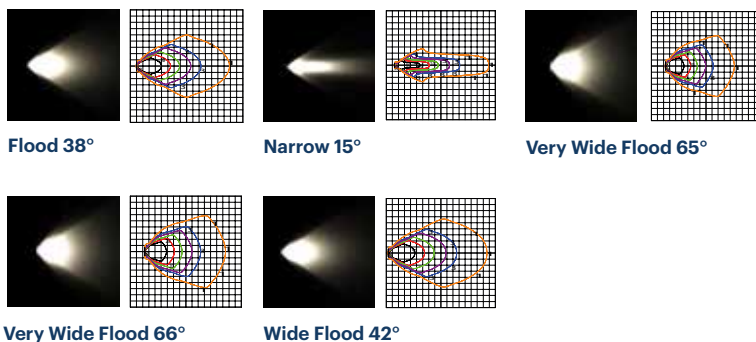


Scan for  
full product  
specification

## Dimensions



## Optics





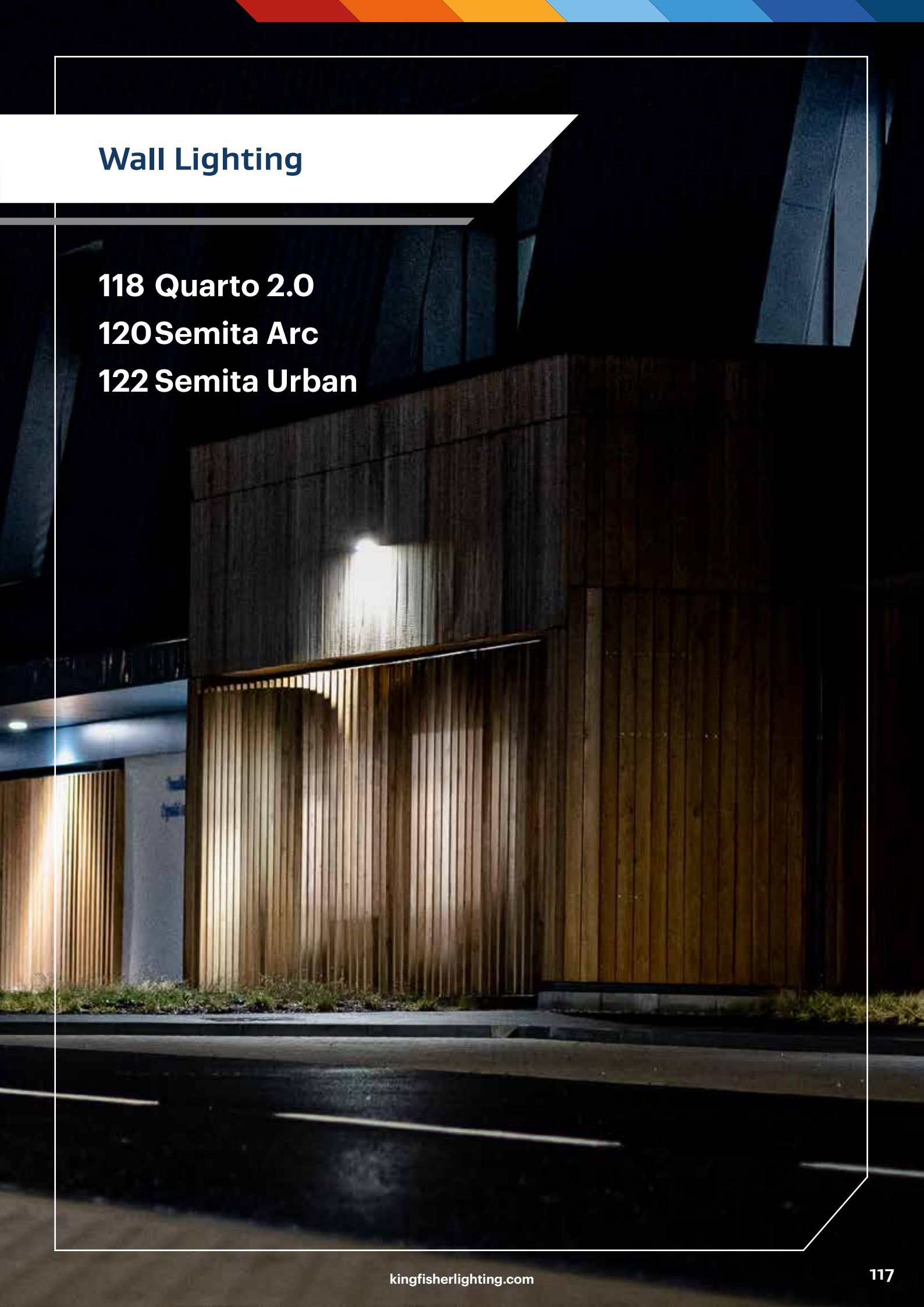


## Wall Lighting

**118 Quarto 2.0**

**120 Semita Arc**

**122 Semita Urban**







# Quarto 2.0

## Product Description

A stylish, modern bulkhead available with LED emergency and photocell. Quarto 2.0 is suited to building and perimeter lighting.

## Specification Text

The Quarto 2.0 shall be manufactured from high-pressure die-cast aluminium and powder coated with a RAL 7016 Anthracite Grey marine grade finish. It shall have a power output ranging between 7.5 - 14.2W, with an efficacy of 96 - 121lm/W. The luminaire shall deliver 720 - 1,720 luminaire lumens. The Quarto 2.0 has a range of different optics to suit narrow, medium and wide paths. Available in 2700K or 4000K, the luminaire shall be IK10 and IP66 rated with 3 hour integral emergency back-up and self-test options available.

## Specification

Weight: 4.2kg  
Material: Die-cast Aluminium  
Paint finish: RAL7016 Anthracite Grey

## Key Features

- 7.5 - 14.2W
- 693 - 1,675 Luminaire Lumens
- Efficacy up to 121.0 lm/W
- 2700K, 4000K, CRI >70
- Lifetime >100,000hr, L80

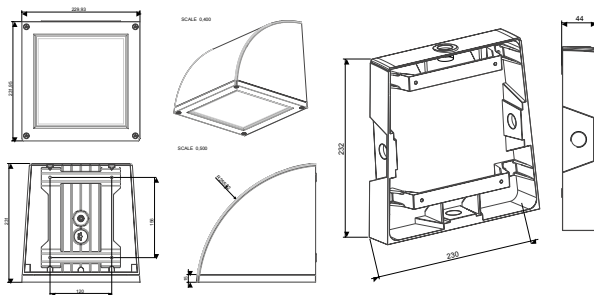
## Other Options

- Photocell Option
- Emergency Option
- Surface Pattress



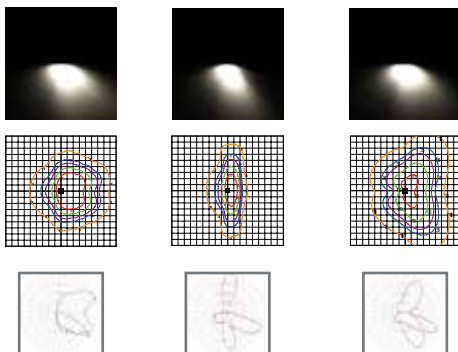
**Scan for  
full product  
specification**

## Dimensions



## Optics

**FL Distribution** **OC Distribution** **ST Distribution**







# Semita Arc

## Product Description

Bring style and functionality to your schemes with Semita Arc.

## Specification Text

The Semita Arc shall be manufactured from high-pressure die-cast aluminium and powder coated with a RAL 7016 Anthracite Grey marine grade finish. It shall have a power output ranging between 7.5 - 15W, with an efficacy from 101 - 116lm/W. It shall deliver 755 - 1,746 luminaire lumens. The Semita Arc has a range of different optics to suit narrow, medium and wide paths. Available in 2700K and 4000K, the luminaire shall be IK10 and IP66 rated with 3 hour integral emergency back-up and self-test options available.

## Specification

Weight:	3.4kg
Windage:	N/A
Material:	Die-cast Aluminium
Paint finish:	RAL 7016 Anthracite Grey Marine Finish

## Key Features

- 7.5W – 15.0W
- 755 – 1,746 Luminaire Lumens
- Efficacy up to 116.0 lm/W
- 2700K & 4000K, CRI >70
- Lifetime >100,000hr

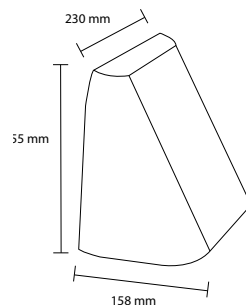


**Scan for  
full product  
specification**

## Other Options

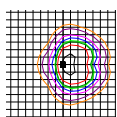
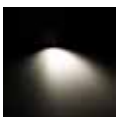
- Emergency Options

## Dimensions

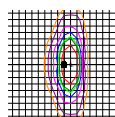
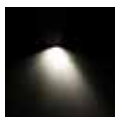


## Optics

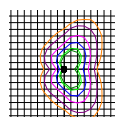
### FL Distribution



### OC Distribution



### ST Distribution







# Semita Urban

## Product Description

Designed and engineered in the UK, Semita Urban brings you the perfect balance of form and function

## Specification Text

The Semita Urban shall be manufactured from high-pressure die-cast aluminium and powder coated with a RAL 7016 Anthracite Grey marine grade finish. It shall have a power output ranging between 6W - 11W, with an efficacy of 115 - 146 lm/W. The luminaire shall deliver 783 - 1,611 luminaire lumens. The Semita Urban has a range of different optics to suit narrow, medium and wide paths. Available in 2700K and 4000K, the luminaire shall be IK10 and IP66 rated with 3 hour integral emergency back-up and self-test options available.

## Specification

Weight:	2.4kg
Windage:	N/A
Material:	Die-cast Aluminium
Paint finish:	RAL 7016 Anthracite Grey Marine Finish

## Key Features

- 6.0W – 11.0W
- 783 – 1,611 Luminaire Lumens
- Efficacy up to 146.0 lm/W
- 2700K & 4000K, CRI >70
- Lifetime >100,000hr

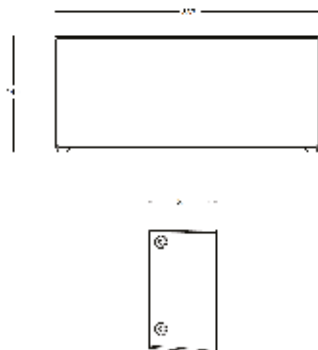


**Scan for  
full product  
specification**

## Other Options

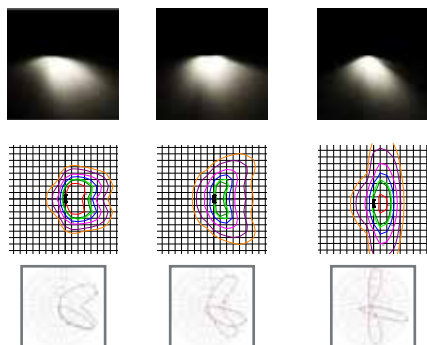
- Emergency Options
- Paint Finish Options
- Photocell Options

## Dimensions



## Optics

### FL Distribution ST Distribution OC Distribution









## Bollards

126 Vailo

128 PIXOL Bollard

130 MIKO Bollard

132 Gothic 180

134 Kompass

136 Kubix

138 Klou

140 Klou IK

142 Helvellyn 2.0





# Vailo

## Product Description

Vailo is a sleek, low glare bollard offering a best-in-class optical system. Available with an array of lumen packages, as well as single or twin sided illumination and adjustable distribution on site.

## Specification Text

The Vailo Bollard shall be manufactured from high quality, non conductive, coloured GRP (RAL7016). It shall have a power output ranging between 4 - 25W, with an efficacy from 52 - 91 lm/W. It shall produce 260 - 2,196 luminaire lumens. The Vailo bollard has single, twin pathway and area distributions to suit pathways, railway applications and other wide locations. It shall have 3 hour integral emergency options available. The luminaire shall come in 2700K and 4000K and be rated IK10 and IP66 with 1000mm high.

## Specification

Weight: 7.8kg

Material: Non Conductive GRP

Paint finish: RAL 7016 Anthracite Grey

## Key Features

- 4.0-25.0W
- 260-2,196 Luminaire Lumens
- Efficacy up to 91lm/W
- 2700K, 4000K, CRI >70
- Lifetime >100,000hr, L70

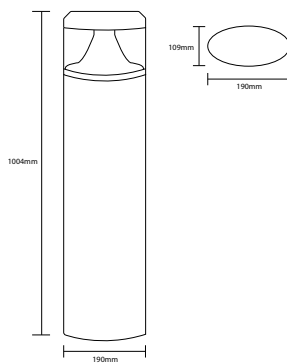
## Mounting Options

- Photocell Options
- Emergency Options

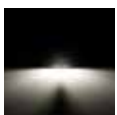


**Scan for  
full product  
specification**

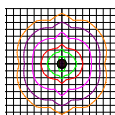
## Dimensions



## Optics



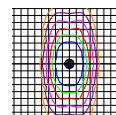
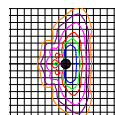
Area Optic



Single Path Optic



Twin Path Optic







# PIXOL Bollard



## Product Description

Available in both wooden and aluminum finishes, the PIXOL bollard has many variations from top illumination to side as well a range of optics to choose from. This versatile range sits perfectly with the Pixol range.

## Specification Text

The PIXOL Bollard shall be manufactured from with a die-cast aluminium body and powder coated with a graphite grey, aluminium silver or treated lamellar wood support. It shall have a power output ranging between 10 - 20W, with an efficacy up to 62 lm/W. It shall produce 280 - 680 luminaire lumens. The PIXOL bollard has both one way and two way distributions. The luminaire shall come in 2700K, 3000K and 4000K and be rated IK08 and IP66 with top or side entry mounted lighting at a height of 900mm high.

## Specification

Weight: 4.8 - 15.3kg

Material: Die-cast Aluminium, Treated Lamellar Wood

Paint finish: Graphite Grey

## Key Features

- 10.0W-20.0W
- 280 - 680 Luminaire Lumens
- Efficacy up to 62 lm/W
- 3000K, 4000K, CRI >80
- Lifetime >60,000hr, L80

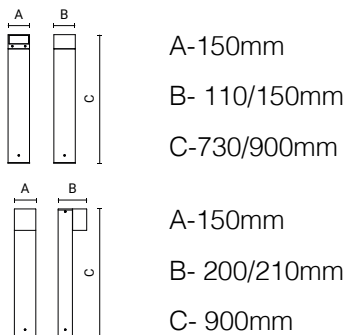


Scan for  
full product  
specification

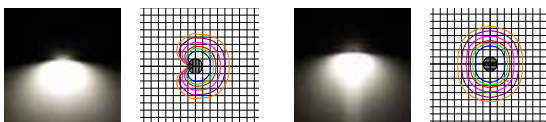
## Other Options

- Paint Finish Options
- Wood Finish Option

## Dimensions

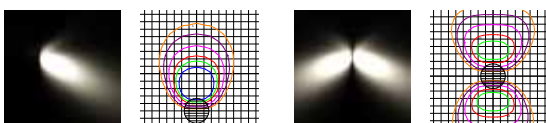


## Optics



One Way

Two Way



One Way

Two Way







# MIKO Bollard

## Product Description

The MIKO bollard is a stylish accompaniment for any modern scheme. Combine with the Miko wall lantern and create a modern, yet uniform scheme.

## Specification Text

The MIKO shall be manufactured from with a die-cast aluminium body with an extruded aluminium pole. It shall be powder coated with a graphite grey or aluminium silver finish. It shall have a power output ranging between 10W - 20W, with an efficacy up to 90 lm/W. It shall produce 800 - 1,800 Lumens. The MIKO bollard has both radial and one way distributions and produces minimal upward light. The luminaire shall come in 3000k and 4000K and be rated IK08 and IP66 with 300mm, 600mm, 800mm and 1000m heights available.

## Specification

Weight: 2.05- 3.45kg  
Windage: 0.03 - 0.08m²  
Material: Die-cast Aluminium  
Paint finish: Aluminium Silver Finish



Scan for  
full product  
specification

## Key Features

- 20.0W
- 1,800 Luminaire Lumens
- Efficacy up to 90 lm/W
- 3000K, 4000K, CRI >80
- Lifetime >60000hr, L80

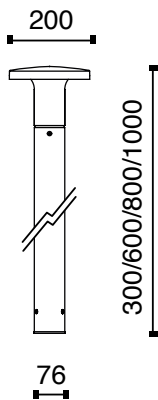
## Mounting Options

- J Bolt, Root Mounting

## Other Options

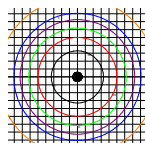
- Paint Finish Options

## Dimensions



## Optics

### Radial







# Gothic 180



## Product Description

This angular bollard is guaranteed to add a modern edge to any scheme. Gothic offers a number of distribution options including radial, two or even three way illumination.

## Specification Text

The Gothic 180 shall be manufactured from with a die-cast aluminium body with an extruded aluminium pole. It shall be powder coated with a graphite grey or aluminium silver finish. It shall have a power output ranging between 19 - 36W, with an efficacy up to 49 lm/W. It shall produce 850 - 1,750 luminaire lumens. The Gothic has radial, two way and three way distributions. It shall produce minimal upwards light. The luminaire shall come in 3000k and 4000K and be rated IK10 and IP66 with 710mm or 1000mm heights available.

## Specification

Weight: 8.7 - 16.2kg  
Windage: 0.13 - 0.18m²  
Material: Die-cast Aluminium  
Paint finish: Graphite Grey Finish

## Key Features

- 19.0 - 36.0W
- 850 - 1,750 Luminaire Lumens
- Efficacy up to 49 lm/W
- 3000K, 4000K, CRI >80
- Lifetime >60000hr, L80

## Mounting Options

- Flange Plate Mount

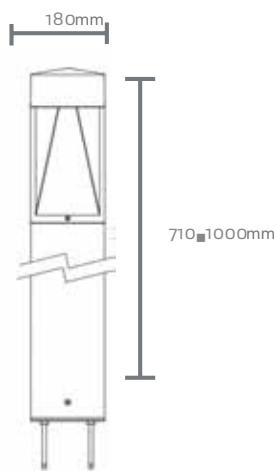
## Other Options

- Paint Finish Options
- Emergency Option

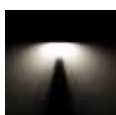


Scan for  
full product  
specification

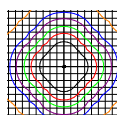
## Dimensions



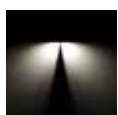
## Optics



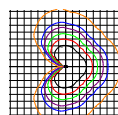
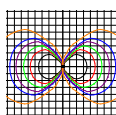
Radial



Two-Way



Three-Way







# Kompass

## Product Description

With mono-directional optics, Kompass creates a direct light beam to highlight specific areas of your scheme. The diffused output creates a soft illumination, free of glare.

## Specification Text

The Kompass Bollard shall be manufactured from with a die-cast aluminium body with an extruded aluminium pole. It shall be powder coated with a graphite grey or aluminium silver finish. It shall have a power output ranging between 12 - 30W, with an efficacy up to 13 lm/W. It shall produce 150 - 350 luminaire lumens. The Kompass bollard has a 180° distribution. The luminaire shall come in 3000K and 4000K and be rated IK10 and IP66 with 1077mm, 784mm and 491mm heights available.

## Specification

Weight: 8.0kg

Windage: 0.12m²

Material: Extruded Aluminium

Paint finish: Graphite Grey Finish

 **Arcluce**



**Scan for  
full product  
specification**

## Key Features

- 12.0W
- 150 Luminaire Lumens
- Efficacy up to 13 lm/W
- 3000K, 4000K, CRI >80
- Lifetime >60000hr, L80

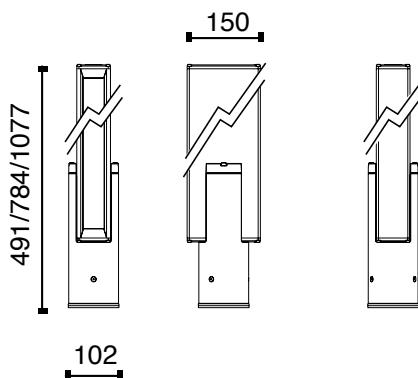
## Mounting Options

- Galvanized, Painted Steel  
Base Plate

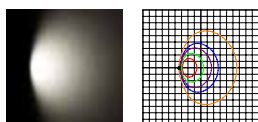
## Other Options

- Paint Finish Options
- Bollard Height Options

## Dimensions



## Optics



**Asymmetrical One-Way**







# Kubix

## Product Description

Kubix is a square, architectural designed bollard. The optic and light source is built in to the die-cast body which gives an indirect light output in various optical arrangements.

## Specification Text

The Kubix shall be manufactured from with a die-cast aluminium body with an extruded aluminium pole. It shall be powder coated with a graphite grey or aluminium silver finish. It shall have a power output ranging between 19 - 36W, with an efficacy up to 46 lm/W. It shall produce 700 - 1650 Lumens. The Kubix bollard has 4 windows switched to produce two way, three way and radial distributions. It shall have 3 hour integral emergency options available. The luminaire shall come in 3000K and 4000K and be rated IK10 and IP66 with 500mm or 1000mm heights available.

## Specification

Weight: 13.6 – 15.4kg

Windage: N/A

Material: Die-cast aluminium

Paint Finish: Graphite Grey Finish

 **Arcluce**

## Key Features

- 19.0W – 36.0W
- 700 – 1,650 Luminaire Lumens
- Efficacy up to 46.0 lm/W
- 3000K & 4000K, CRI >70
- Lifetime 100,000hrs
- Bespoke Optical Design
- Marine Grade as Standard

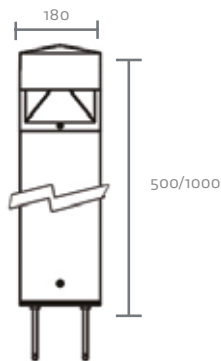
## Other Options

- Paint Finish Option
- Emergency Option (1m)



**Scan for  
full product  
specification**

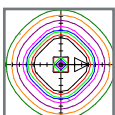
## Dimensions



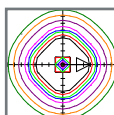
## Optics



Radial



Radial







# Klou 180



## Product Description

The Klou 180 provides a combination of different optics with perfect beam control. The bollards are designed to be robust and vandal resistant yet with a stylish circular design.

## Specification Text

The Klou 180 shall be manufactured from with a die-cast aluminium body with an extruded aluminium pole. It shall be powder coated with a graphite grey or aluminium silver finish. It shall have a power output of 19W, with an efficacy up to 87 lm/W. It shall produce 1,650 luminaire lumens. The Klou 180 is a screened bollard with one way and radial distributions. It shall have 3 hour integral emergency options available. The luminaire shall come in 3000k and 4000K and be rated IK09 and IP66 with 500mm and 1000mm heights available.

## Specification

Weight:	5.9 – 9.5kg
Windage:	0.09 – 0.2m <sup>2</sup>
Material:	Die-cast Aluminium
Paint finish:	Graphite Grey Finish

## Key Features

- 19.0W
- 1,650 Luminaire Lumens
- Efficacy up to 87.0 lm/W
- 3000K & 4000K, CRI >70
- 500mm and 1000mm options



Scan for  
full product  
specification

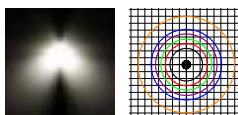
## Other Options

- Emergency Options (1m)
- Paint Finish Options

## Dimensions



## Optics



Radial 500mm







# Klou IK



## Product Description

Providing perfect beam control, the Klou IK utilises different optics to provide a combination of different optics. The bollards are designed to be durable and vandal resistant, yet stylish.

## Specification Text

The Klou IK 180 shall be manufactured from with a die-cast aluminium body with an extruded aluminium pole. It shall be powder coated with a graphite grey or aluminium silver finish. It shall have a power output ranging between 14 - 25W, with an efficacy up to 87 lm/W. It shall produce 700 - 1400 luminaire lumens. The Klou IK 180 bollard has one way, two way and radial distribution. It shall provide minimal upwards light with 3 hour integral emergency options available. The luminaire shall come in 3000K and 4000K and be rated IK10 and IP66 with 250mm, 500mm and 1000mm heights available.

## Specification

Weight: 7.3 – 10.8kg  
Windage: 0.09 – 0.2m<sup>2</sup>  
Material: Die-cast Aluminium  
Paint finish: Graphite Grey Finish

## Key Features

- 14.0W – 25.0W
- 700 – 1,400 Luminaire Lumens
- Efficacy up to 87.0 lm/W
- 3000K & 4000K, CRI >70
- Lifetime >100,000hr

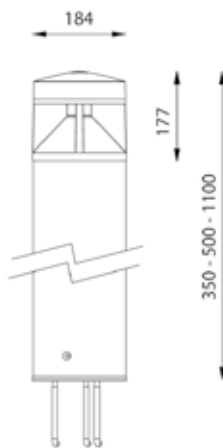


Scan for  
full product  
specification

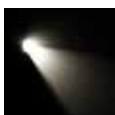
## Other Options

- Emergency Options (1m)
- Paint Finish Options

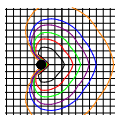
## Dimensions



## Optics



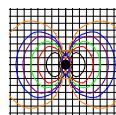
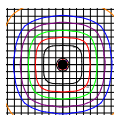
One Way



Radial



Two Way







# Helvellyn 2.0

## Product Description

This sleek, stainless steel LED bollard has an on site adjustable output for optimum performance.

## Specification Text

The Helvellyn 2.0 shall be manufactured from stainless steel. It shall have a power output ranging between 7.5 - 15W, with an efficacy up to 124 lm/W. It shall produce 930 - 1,860 luminaire lumens. The Helvellyn 2.0 have a radial distribution and can be supplied with 3 hour integral emergency. The luminaire shall come in 2700K and 4000K and be rated IK08 and IP66 a height of 1000mm.

## Specification

Weight: 5.9 - 11.3kg  
Windage: 0.09 - 0.2m<sup>2</sup>  
Material: Die-cast Aluminium  
Paint finish: Stainless Steel



**Scan for  
full product  
specification**

## Key Features

- 7.5 - 15.0W
- 930 - 1,860 Luminaire Lumens
- Efficacy up to 124 lm/W
- 4000K, CRI >70
- Lifetime >60,000hr, L80
- On Site Adjustable Output

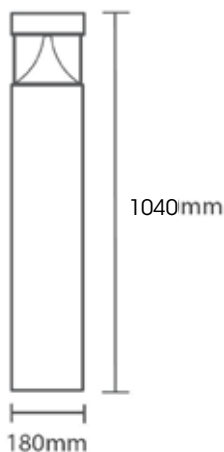
## Mounting Options

- Flange Plate Mount

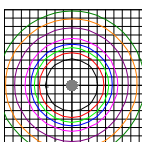
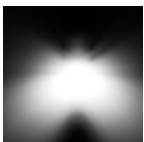
## Other Options

- Emergency Option
- Spill Shield Option

## Dimensions



## Optics



**Radial**







## Light Poles

**146 Soul 180**

**148 Quadrio**

**150 MOD 2.0 Tower and Bollard**







# Soul 180



## Product Description

The sleek and stylish Soul bollard comes available in three sizes, and packs a powerful punch. Using a bollard or light pole solution, create the perfect promenade illumination or highlight urban scenes.

## Specification Text

The Soul Bollard shall be manufactured from with a die-cast aluminium body with an extruded aluminium pole. It shall be powder coated with a graphite grey or aluminium silver finish. It shall have a power output of 119-27W, with an efficacy up to 82 lm/W. It shall produce 1,550 - 2,100 luminaire lumens. The Soul bollard has a radial distribution. The luminaire shall come in 3000K and 4000K and be rated IK07 and IP66 with 1000mm high.

## Specification

Weight: 8.5 - 25.0kg  
Windage: 0.55 - 0.6m<sup>2</sup>  
Material: Die-cast Aluminium  
Paint finish: Graphite Grey Finish

## Key Features

- 19.0 - 27.0W
- 1,550 - 2,100 Luminaire Lumens
- Efficacy up to 82 lm/W
- 3000K, 4000K, CRI >80
- Lifetime >60000hr, L80



Scan for  
full product  
specification

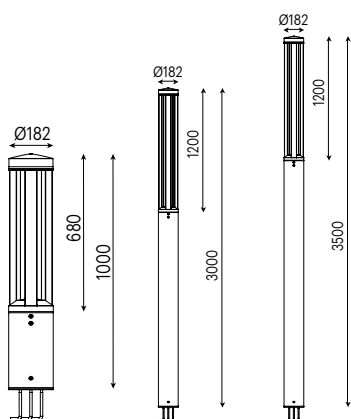
## Mounting Options

- Root Mount

## Other Options

- Paint Finish Options

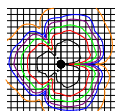
## Dimensions



## Optics



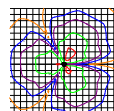
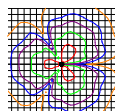
Radial 1000mm



Radial 3000mm



Radial 3500mm







# Quadrio

## Product Description

Available with both comfort and performance outputs, Quadrio is the square bollard bringing sophistication to your scheme.

## Specification Text

The Quadrio Bollard shall be manufactured from with a die-cast aluminium body with an extruded aluminium pole. It shall be powder coated with a graphite grey or aluminium silver finish. It shall have a power output ranging between 27 - 37W, with an efficacy up to 64 lm/W. It shall produce 1,650 - 2,350 luminaire lumens. The Quadrio bollard has a radial distribution. The luminaire shall come in 3000K and 4000K and be rated IK07 and IP66 with an 1000mm height available.

## Specification

Weight: 10.1 - 10.3kg

Windage: 0.18m<sup>2</sup>

Material: Die-cast Aluminium

Paint finish: Graphite Grey Finish

 **Arcluce**

## Key Features

- 27.0 - 37.0W
- 1,650 - 2,350 Luminaire Lumens
- Efficacy up to 64 lm/W
- 3000K, 4000K, CRI >80
- Lifetime >60000hr, L80



**Scan for  
full product  
specification**

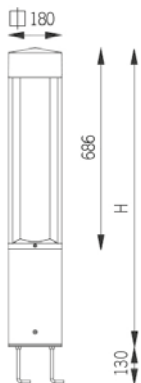
## Mounting Options

- Flange Plate Mount

## Other Options

- Paint Finish Options
- Various Height Options

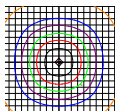
## Dimensions



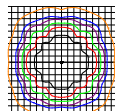
## Optics



**Radial Comfort**



**Radial Performance**







# MOD 2.0 Tower & Bollard

## Product Description

This diverse range of Italian made luminaires incorporates a modular bollard and tower, urban fitting and flood light option. With a variety of accessories to fit with full urban schemes, the MOD 2.0 series has everything needed for a growing cityscape.

## Specification Text

The MOD 2.0 Bollard shall be manufactured from high-pressure die-cast aluminium and shall be powder coated with a graphite grey marine grade finish. It shall have a power output of 11W - 39W, with an efficacy from 89 - 132 lm/W. It shall produce 1,050 - 5,160 luminaire lumens. The MOD 2.0 Bollard shall utilise reflector-based optics to create a comfortable low glare illumination with distributions to suit pathways. It shall have a fully programmable DALI driver. The luminaire shall come in 2700K, 3000K and 4000K and be rated IK08 and IP66, 500mm and 1000mm height options available.

## Specification

Weight: 19.0 - 84.5kg

Material: Die-cast Aluminium

Paint finish: Graphite Grey

## Key Features

- 11.0W-39.0W
- 1,050 - 5,160 Luminaire Lumens
- Efficacy up to 132 lm/W
- 3000K, 4000K, CRI >70
- Lifetime >100,000hr, L90
- Marine Grade as Standard

## Mounting Options

- Bollard - Flange Mounted
- Tower - Rooted or Flange Mounted

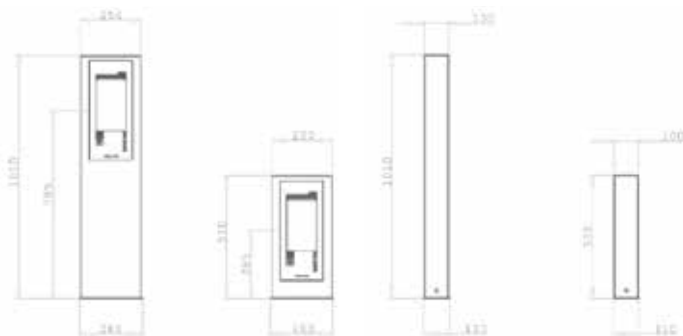
## Other Options

- Paint Finish Options
- Emergency option



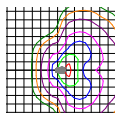
Scan for  
full product  
specification

## Dimensions



## Optics

SO5









**Inground, Recessed and  
Surface Mounted**

**154 Inground Series**

**156 Thunder Series**

**158 Ray Series**

**160 Stone Series**

**162 Cinep**

**164 Tocca 2.0**





# Inground Series



## Product Description

The Inground Series is a versatile solution for all architectural areas. These high quality uplighters come in a variety of sizes with tier one components.

## Specification Text

The Inground range shall be manufactured from die-cast aluminium with 316L stainless steel trim. It shall have a power output ranging from 2 - 20W, with an efficacy of up to 144lm/W. It shall deliver 150 - 2000 luminaire lumens. The Inground is available with a range of different beam angles and sizes from 25 - 260mm to suit a wide variety of projects. Available in 3000K and 4000K or RGBW, the luminaire shall be IK10 and IP67 rated, with a drive over rating up to 5000kg available.

## Specification

Weight: 0.3 - 9.7kg

Material: 316L Stainless Steel

Paint finish: Stainless Steel Finish

## Key Features

- 2.0 - 20.0W
- 150 - 2,000 Luminaire Lumens
- Efficacy up to 144 lm/W
- 3000K, 4000K, CRI >80
- Lifetime >60000hr, L80

## Mounting Options

- Recessed and Wall Mount

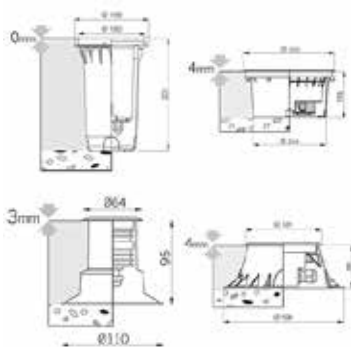
## Other Options

- Paint Finish Options

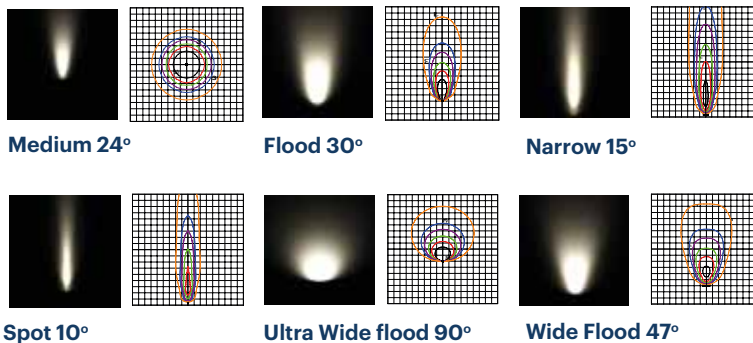


Scan for  
full product  
specification

## Dimensions



## Optics









# Thunder Series



## Product Description

Thunder series is the versatile wall mounted luminaire range, ideal for any accent lighting scheme. Recess wall mount to create pathway, architectural and feature illumination.

## Specification Text

The Thunder range shall be manufactured from die-cast aluminium. It shall have power outputs ranging from 4 - 8W, with an efficacy of up to 128 lm/W. It shall deliver 55 - 510 luminaire lumens. The Thunder is available with a range of different beam angles and sizes from 25 - 260mm to suit a wide variety of projects. Available in 3000K or 4000K, the luminaire shall be IK10 and IP68 rated.

## Specification

Weight: 0.4 - 1.9kg  
Material: 316L Stainless Steel  
Die-cast Aluminium  
Paint finish: Stainless Steel Finish  
Aluminium Silver Finish

## Key Features

- 4.0 - 8.0W
- 55 - 510 Luminaire Lumens
- Efficacy up to 128 lm/W
- 3000K, 4000K, CRI >80
- Lifetime >60000hr, L80



Scan for  
full product  
specification

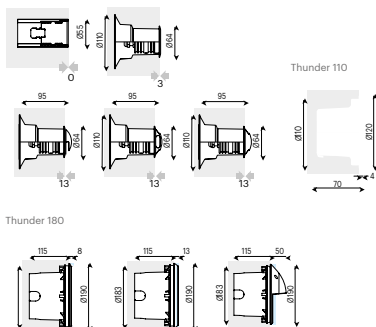
## Mounting Options

- Recessed and Wall flush Mount

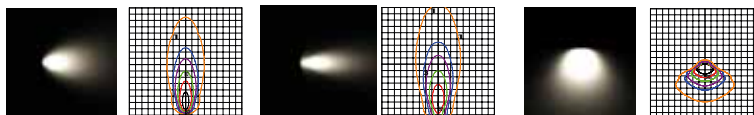
## Other Options

- Paint Finish Options

## Dimensions



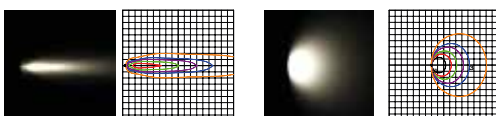
## Optics



Elliptic 44°x 22°

Medium 25°

One-Way



Spot 10°

Ultra Wide Flood 90°







# Ray Series



## Product Description

The Ray series is a range stainless steel down lighters available in an array of sizes and beam angles. Perfect for canopy lighting and wall washes.

## Specification Text

The Ray range shall be manufactured from die-cast aluminium with 316L stainless steel trim. It shall have power outputs ranging from 4 - 12W, with an efficacy of up to 130 lm/W. It shall deliver 450 - 1,150 luminaire lumens. The Ray is available with a range of different beam angles and sizes from 25 - 180mm to suit a wide variety of projects. Available in 3000K, 4000K or RGBW, the luminaire shall be IK07 and IP67 rated.

## Specification

Weight: 0.8 - 2.4kg  
Material: Extruded Aluminium  
Paint finish: Stainless Steel Finish

## Key Features

- 4.0W - 12.0W
- 450 - 1,150 Luminaire Lumens
- Efficacy up to 130 lm/W
- 3000K, 4000K, CRI >80
- Lifetime > 60000hr, L80

## Mounting Options

- Recessed Mount

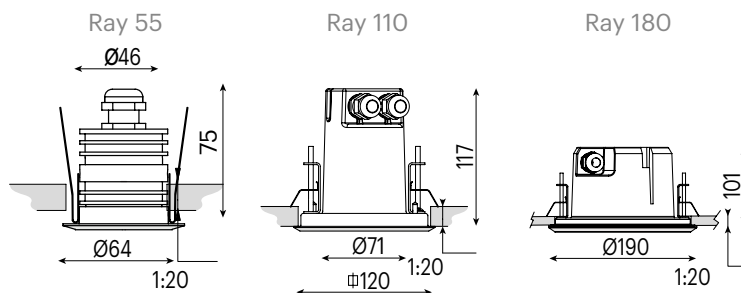
## Other Options

- Paint Finish Options

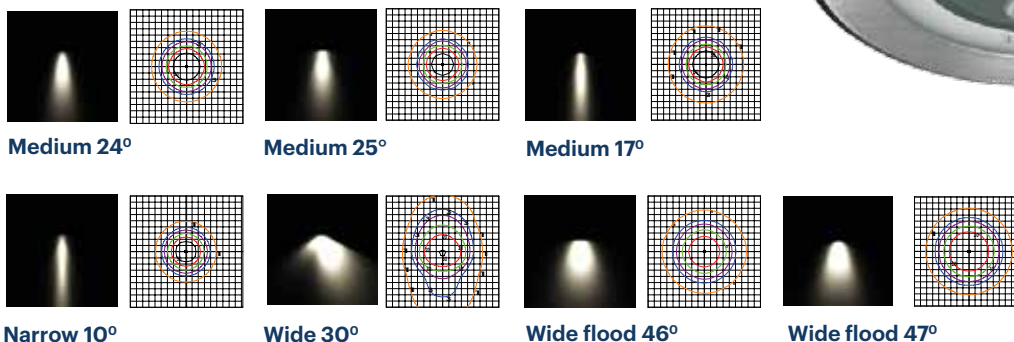


Scan for  
full product  
specification

## Dimensions



## Optics







# Stone Series



## Product Description

Stone is a series of in-ground luminaires available in an array of sizes and distributions. With heavy duty drive-over options, and paired with other in-ground series', these fixtures are perfect for accenting or highlighting pathways.

## Specification Text

The Stone shall be manufactured from die-cast aluminium. It shall have power outputs ranging from 3.5 - 19W, with an efficacy of up to 29 lm/W. It shall deliver 15 - 125 luminaire lumens. The Stone Range is available with a range of different distributions and sizes to suit a wide variety of projects. Available in 3000K and 4000K, the luminaire shall be IK10 and IP67 rated, with a drive over rating up to 4000kg available.

## Specification

Weight: 0.7 - 8.9kg  
Material: 316L Stainless Steel  
Die-cast Aluminium  
Paint finish: Graphite grey

## Key Features

- 3.5 - 19.0W
- 15 - 550 Luminaire Lumens
- Efficacy up to 29lm/W
- 3000K, 4000K, CRI>80
- Lifetime > 60,000hr, l80



Scan for  
full product  
specification

## Mounting Options

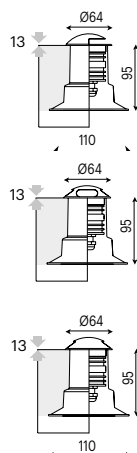
- Surface Mount

## Other Options

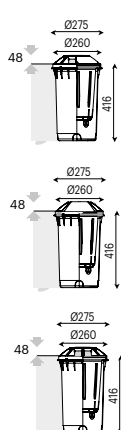
- Paint Finish Options

## Dimensions

Stone 55



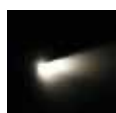
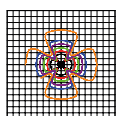
Stone 260



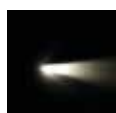
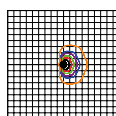
## Optics



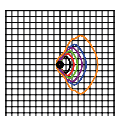
Radial  
Direction



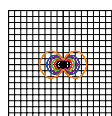
One-way



One-way



Two-way







# Cinep

## Product Description

Cinep, the versatile luminaire is the ideal accompaniment to accent architectural schemes. This flexible fitting can be trimmed to size for the perfect finish.

## Specification Text

The Cinep shall be manufactured from UV and high temperature resistant polyurethane. It shall have a power output ranging from 10 - 50W, with an efficacy of 50 - 84lm/W. It shall deliver 500 - 4,175 luminaire lumens. The Cinep is available in 1 - 5m lengths that can be cut down on site for precise installation. Available in 3000K, the luminaire shall be IK08 and IP68 rated.

## Specification

Weight:	0.4 – 1.4kg
Windage:	N/A
Material:	UV and high-temperature resistant polyurethane
Paint finish:	White Finish

## Key Features

- 10.0W – 50.0W
- 500 – 4,175 Luminaire Lumens
- Efficacy up to 84.0 lm/W
- 3000K, CRI >70
- Lifetime >100,000hr

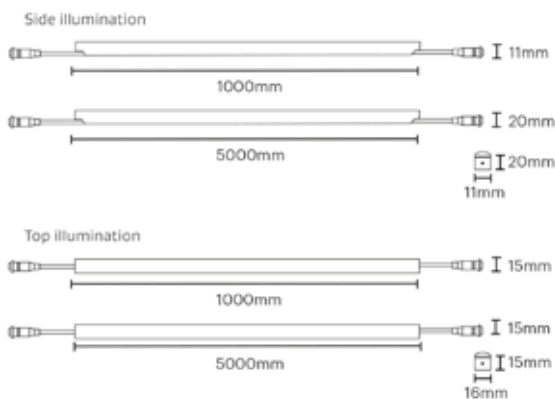
## Mounting Options

- Surface Mount
- Side and Top illumination Options

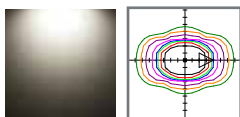


**Scan for  
full product  
specification**

## Dimensions



## Optics



**Cinep Light  
Distribution**







# Tocca 2.0

## Product Description

Tocca 2.0 is perfect for recessing into handrails and baseboards. With its slim dimension and flexible lengths, Tocca can be used across a range of applications.

## Specification Text

The luminaire shall be manufactured from high pressure die-cast aluminium. It shall have an LED efficacy of up to 76 lm/W and will be capable of producing up to 716 luminaire lumens at 2700K with a CRI >82. It shall have a symmetric optic and is rated at IP66 and IK10.

## Specification

Weight: 0.1 - 0.5kg

Material: Extruded Aluminium

Paint Finish: Aluminium Silver

## Key Features

- 4.2 - 15.4W
- 195 - 716 Luminaire Lumens
- Efficacy up to 76 lm/W
- 2700K, CRI >80
- Lifetime >50,000hr
- Opal 120° or Frosted 80° diffuser
- Symmetrical
- Suitable For Circular And Non-Circular Profiles
- Plug And Play Connector

## Mounting Options

- Anti-Tamper Screws
- Flat End Plates
- IP67 Junction Boxes For Surface Mounting

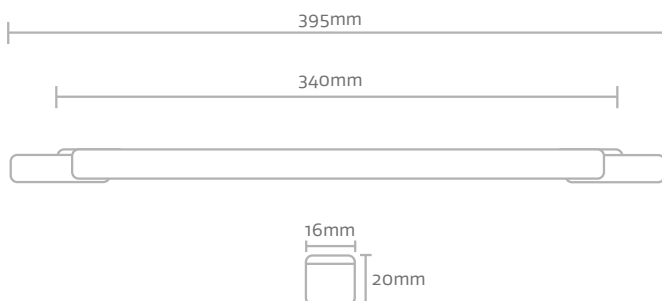
## Other Options

- Recessed, Semi-Recessed And Surface Mounted

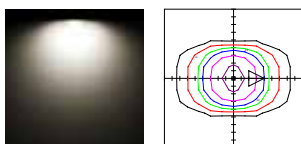


**Scan for  
full product  
specification**

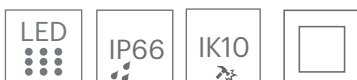
## Dimensions



## Optics



**Symmetrical 120°**







olympic  
sheffield

# Columns

## **Kingfisher Lighting Columns and Brackets**

Experts in columns for almost 30 years', we've amassed a comprehensive selection to suit many project specifications. Designed in accordance with BS EN40, we host many height variants and column types including but not limited to conical, tubular and hinged which caters to the most challenging of site specifications.

Through our range of bracketry and accessories options, we can offer the perfect union between luminaire and column type. Ensuring the quality and aesthetic meets the expectations of the client.

Utilising our in-house design and fabrication teams, we are able to create bespoke bracketry, modification all with standard or different paint finishes.





# A Deeper Look into Our Range

We have a variety of columns ranging from 4 metres to 20 metres high, including tubular, conical, octagonal, mid and base hinged as well as sports and high masts. The Kingfisher column range is manufactured from steel tube to EN10210 as standard with a hot dip galvanised steel finish. However, many of our columns can be powder coated upon request, this allows a range of colour options for your site to enhance any aesthetic.

When designing with any columns, you must ensure you design to ensure the structural integrity of the scheme remains intact. BS EN40 provides a detailed framework for the design of the column and how it should be accounted for in exterior lighting schemes. Lighting designs must consider – weight and windage, wind speed, site altitude and site terrain and topography.

The Kingfisher Lighting Design Team are fully equipped to help with your column selection during the design process. They'll advise the best mounting heights for your illumination as well as which columns will work best for your site.



# Specialist Columns

AEC's range of specialist columns offers variety of height, shapes, sizes and finishes, allowing for the perfect harmony between luminaire and column.

Designed and manufactured to relevant European standards, the AEC Pole Division was created with specialist architectural columns and brackets in mind. Located a short distance from the AEC headquarters, this plant accommodates high tech capabilities and state-of-the-art automated warehousing.





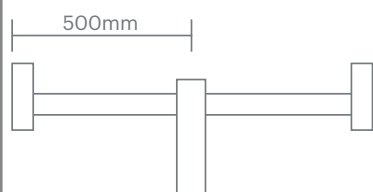


# Brackets

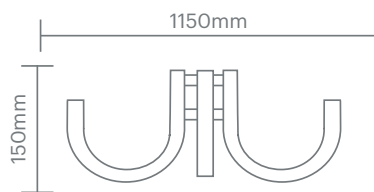
At our in-house fabrication facility, we can create a vast range of brackets suitable for many columns and luminaires. We also have the capability to create bespoke bracketry for those extra tricky jobs in which standard brackets just won't suffice. Please discuss your requirements with our team who will assist you in choosing the best bracket for the job. Some of our more popular designs are below.

## Amenity Brackets

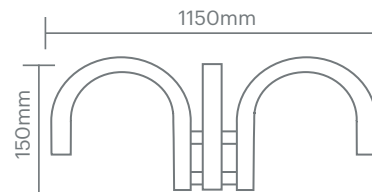
### Precinct 'AB'



### Crescent 'BB'

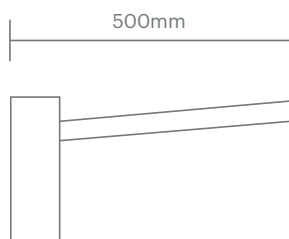


### Crescent 'BBD'

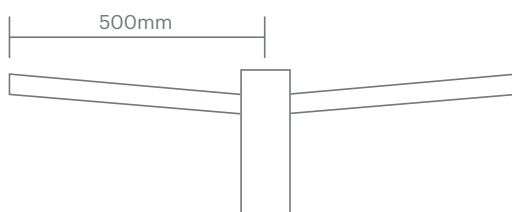


## Highway Brackets

### SR



### DR





# Flood Light Brackets

**Need a secure bracket able to withstand the heavy load of your floodlight?**

**Look no further...Kingfisher Lighting can create numerous flood light brackets to help securely mount your luminaires.**

We offer single, double, triple and four-way brackets as part of our standard flood bracket range but can also create bespoke bracketry for those difficult jobs.

All our brackets are supplied with all necessary components (nuts, bolts etc) as well as a hot dip galvanised finish.

STM1 Single flood light mounting bracket

STM2 Twin flood light mounting bracket

STM3 Triple flood light mounting bracket

STM4 Four-way flood light mounting bracket

**STM1**



**STM2**



**STM3**



**STM4**







# Quick Reference Product Guide

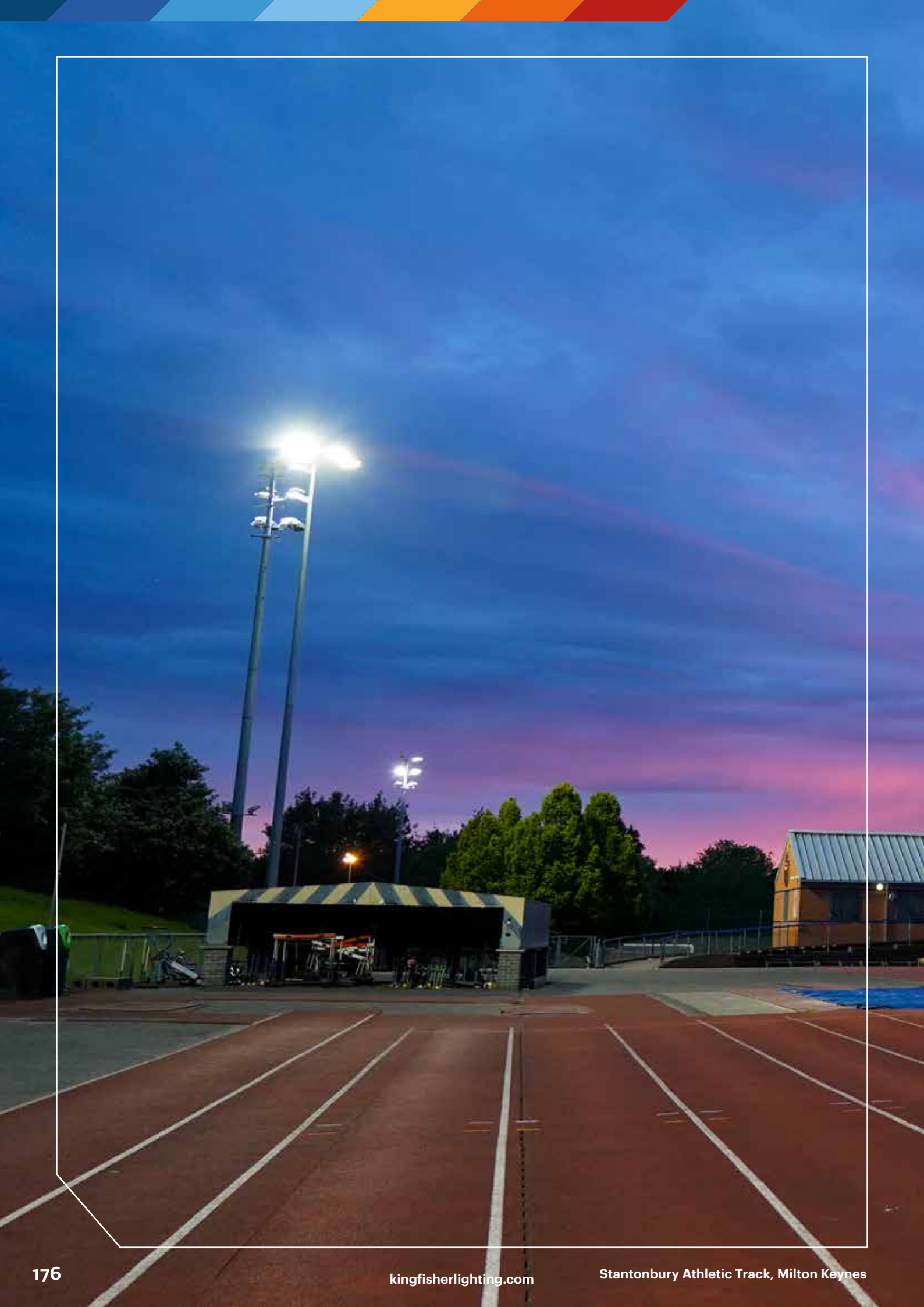
We pride ourselves on our outstanding market leading product range and design our products with versatility in mind. We have created a quick product reference guide so you can see what options you have when it comes to the Kingfisher Range.

Ask our team to find out more about our products



Category	Product	Photocell	PIR	Nema/ Zhaga	Emergency	Emergency Self Test	DALI	Full programmable DALI Driver	Colour Temperature				Paint Finish			Category
									Controls compatible	4000K	3000K	2700K	Marine Grade	RAL Option	Overpainting Option	
Post Top	Italo Series	Y	Y	Y	Y	N	Y	Y	Y	Y	Y	R	Y	Y	N	N
	Italo 2	Y	Y	Y	Y	N	Y	Y	Y	Y	Y	R	Y	Y	N	Y
	Revelampe	N	N	N	N	N	Y	Y	Y	Y	Y	R	Y	Y	N	N
	Eco Rays	Y	Y	Y	N	N	Y	Y	Y	Y	Y	R	Y	Y	N	Y
	I-TRON	Y	N	Y	N	N	Y	Y	Y	Y	Y	R	Y	Y	N	N
	MOD 2.0 Urban	Y	N	N	Y	N	Y	Y	N	Y	Y	R	Y	Y	N	N
	MOD 2.0 Pro	N	N	N	N	N	Y	Y	N	Y	Y	R	Y	Y	N	N
	Arteyls	N	N	N	N	N	Y	Y	Y	Y	Y	R	Y	Y	N	Y
	Master	Y	N	Y	N	N	Y	Y	Y	Y	Y	R	Y	Y	N	N
	Stylo	Y	N	Y	N	N	Y	Y	N	Y	Y	R	Y	Y	N	N
	Story	Y	N	N	N	N	Y	Y	Y	Y	Y	R	Y	Y	N	N
	Lunio	N	N	N	N	N	Y	N	N	Y	Y	R	N	Y	N	N
	Zoya	Y	N	N	N	N	Y	N	Y	Y	Y	R	N	Y	N	N
	Krane	N	N	N	N	N	Y	N	N	Y	Y	R	N	Y	N	N
	Cono	N	N	N	N	N	Y	N	N	Y	Y	R	N	Y	N	Y
	Villa II	Y	N	N	Y	N	Y	Y	Y	Y	N	Y	N	N	R	N
	NAVAR-Urban	Y	Y	Y	Y	N	Y	Y	Y	Y	N	Y	Y	N	N	Y
	NAVAR-Pro	N	N	N	N	N	Y	Y	Y	Y	N	Y	Y	N	N	N
	NAVAR-Urban Pro	Y	Y	Y	Y	N	Y	Y	Y	Y	N	Y	Y	N	N	R
Flood	Amnis Flood	N	N	R	N	N	Y	N	R	Y	N	Y	Y	N	R	N
	Amnis Pro	N	N	R	N	N	Y	Y	R	Y	N	R	Y	N	R	N
	Amnis Match	N	N	R	N	N	Y	N	R	Y	N	R	Y	N	R	N
	Zactis	Y	N	Y	N	N	Y	Y	Y	Y	R	Y	Y	N	N	N
	Viva-City Flood	Y	N	R	N	N	Y	Y	Y	Y	N	Y	N	N	R	N
Bollards & Poles	MOD 2.0 Bollard	N	N	N	N	N	Y	N	N	Y	Y	R	Y	Y	N	N
	MOD 2.0 Tower	N	N	N	N	N	Y	N	N	Y	Y	R	Y	Y	N	N
	Miko	N	N	N	N	N	N	N	N	Y	Y	R	N	Y	N	N
	Kompass	N	N	N	N	N	N	N	N	Y	Y	R	N	Y	N	N
	Soul 180	N	N	N	N	N	Y	N	N	Y	Y	R	N	Y	N	N
	Klou series	Y	N	N	Y	Y	Y	N	N	Y	Y	R	N	Y	N	N
	Gothic 180	Y	N	N	Y	Y	Y	N	N	Y	Y	R	N	Y	N	N
	Quadrio 180	Y	N	N	Y	Y	Y	N	N	Y	Y	R	N	Y	N	N
	Helvellyn 2.0	Y	N	N	Y	Y	R	N	N	Y	N	Y	N	N	N	N
	VAILO	Y	N	N	Y	R	Y	Y	Y	Y	N	Y	Y	N	N	N
	Kubix	Y	N	N	Y	Y	Y	N	N	Y	Y	R	N	Y	N	N
Mounted Wall	Tula Series	N	N	N	N	N	Y	N	N	Y	Y	R	N	Y	N	N
	Ellis Series	N	N	N	N	N	Y	N	N	Y	Y	R	N	Y	N	N
	DOT	N	N	N	N	N	Y	N	N	Y	Y	R	N	Y	N	N
	Napo	N	N	N	N	N	Y	N	N	Y	Y	R	N	Y	N	N
	Miko wall	N	N	N	N	N	N	N	N	Y	Y	R	N	Y	N	N
	Quarto 2.0	Y	N	N	Y	N	N	N	N	Y	N	Y	N	N	R	N
	Semita Urban	Y	N	N	Y	Y	Y	Y	N	Y	R	Y	N	N	Y	N
	Semita arc	N	N	N	Y	Y	Y	N	N	Y	N	Y	N	N	N	N
Mini Flood/ Accent	Duedieci	Y	N	N	N	N	Y	N	N	Y	Y	R	N	Y	N	N
	Dueventi	N	N	N	N	N	Y	N	N	Y	Y	R	N	Y	N	N
	Moto	N	N	N	N	N	Y	N	N	Y	Y	R	N	Y	N	N
	Pantheon 2	N	N	N	N	N	Y	N	N	Y	Y	R	N	Y	N	N
	Tito Series	N	N	N	N	N	Y	N	N	Y	Y	R	N	N	N	N
Recessed	Inground Series	N	N	N	N	N	Y	N	N	Y	Y	R	R	R	N	N
	Stone Series	N	N	N	N	N	Y	N	N	Y	Y	R	N	Y	N	N
	Ray Series	N	N	N	N	N	Y	N	N	Y	Y	R	N	N	N	N
	Thunder Series	N	N	N	N	N	Y	N	N	Y	Y	R	N	N	N	N
	Krion-IN	N	N	N	N	N	Y	N	N	Y	Y	R	N	Y	N	N
	KRION	N	N	N	N	N	Y	N	N	Y	Y	R	N	Y	N	N
	Cinep	N	N	N	N	N	Y	N	N	Y	Y	R	N	N	N	N
	Veron	N	N	N	N	N	Y	N	N	Y	R	R	N	N	N	N
	Tocca 2.0	N	N	N	R	N	R	N	N	R	R	Y	N	N	N	N







# Kingfisher **SPORT**

## **We provide end to end solutions for all your sports and high mast sites.**

Power and performance are two qualities every sports lighting system requires. Created with innovation in mind, the Kingfisher Sport range offers versatile solutions for illuminating everything from high-profile grounds to grass root pitches and everything in between.

Using reflector technology and the highest quality components, we have designed and engineered a range of high-performance luminaires that provide superior uniformity and efficiency as standard.

From simple product supply to full commissioning of bespoke solutions, our wrap-around service ensures peace of mind from start to finish.

### **Lee Hayter**

Sports & High Mast Project Sales Engineer  
Mobile: +44(0)7393 148858  
Email: [lhayter@kingfisherlighting.com](mailto:lhayter@kingfisherlighting.com)

### **Thomas Ford**

Sports & High Mast Technical Sales Engineer  
Mobile: +44(0)0797 4454611  
Email: [tford@kingfisherlighting.com](mailto:tford@kingfisherlighting.com)





# Kingfisher RAIL

With a complex network of rail systems across the UK, our dedicated range of luminaires and accessories are perfectly designed for trackside locations.

Rail projects have a complex set of regulations and safety requirements, meaning expert project management and product selections are essential. Designed and engineered in the UK, our GRP rail bollard offers best-in-class spacings of up to 10m with unique twin or single sided illumination.

To complement our high-spec post-top offering, our range of rail columns are specifically designed for areas where installation and maintenance works can be limited by space. Equipped with a host of carefully selected products, our Rail Team offer full guidance on everything from trackside applications to stations, bridges and carparking requirements.



### Vailo

Vailo is a sleek, low glare bollard offering a best-in-class optical system. Available with an array of lumen packages, as well as single or twin sided illumination and adjustable distribution on site.

### Liam Watson

National Project Sales Engineer  
Rail & Infrastructure  
Mobile: +44(0)7974 454610  
Email: [lwatson@kingfisherlighting.com](mailto:lwatson@kingfisherlighting.com)







# Symbols

Here's a quick guide to our technical symbols ensuring your product meets specification every time.



**IP55**  
Dust protected and 6.3mm water jet protected.



**IP65**  
Dust tight and 6.3mm water jet protected.



**IP66**  
Dust tight and 12.5mm heavy water jet protected.



**IP67**  
Dust tight and water immersion beyond 1m.



**IK**  
Degrees of protection provided by enclosures for electrical equipment against external mechanical impacts as per EN62262.



**Control Compatible**

**Controls Compatible**



**IDA**  
The International Dark Skies Association 'Seal of Approval'



**Class 1**  
These appliances must have their chassis connected to electrical earth.



**Class 2**  
Double insulated, does not require a safety connection to electrical earth.



**Class 3**  
Supplied from a separated/safety extra low voltage power source.



**LED**  
Available with LED.



**Dimming**  
Suitable for dimming.



**RGB**  
Available with RGB colour changing.



**Emergency**  
Emergency Options Available



**Colour Temperature**  
Colour Temperature Options Available

## BREEAM

There are 3 credits available for external lighting

### Pol 04 Reduction of night time light pollution

Aim – To ensure that external lighting is concentrated in the appropriate areas and that upward lighting is minimised, reducing unnecessary light pollution, energy consumption and nuisance to neighbouring properties.

**Assessment criteria** – The external lighting strategy has been designed in compliance with Table 2 (and its accompanying notes) of the ILP Guidance notes for the reduction of obtrusive light, 2011.

### Hea 01 Visual comfort

Aim – To ensure daylighting, artificial lighting and occupant controls are considered at the design stage to ensure best practice in visual performance and comfort for building occupants.

**Assessment criteria** – External lighting. All external lighting located within the construction zone is designed to provide illuminance levels that enable users to perform outdoor visual tasks efficiently and accurately, especially during the night. To demonstrate this, external lighting provided is specified in accordance with BS 5489-1:2013 Lighting of roads and public amenity areas 3 and BS EN 12464-2:2014 Light and lighting - Lighting of work places - Part 2: Outdoor work places.

### Ene 03 External lighting

Aim – To recognise and encourage the specification of energy efficient light fittings for external areas of the development.

**Assessment criteria** – The average initial luminous efficacy of the external light fittings within the construction zone is not less than 60 luminaire lumens per circuit Watt.

\*Kingfisher Lighting Ltd offer a 5-year warranty on all LED luminaires (excluding Inground series) on the basis that they are installed and operated in accordance with the manufacturer's instructions and within all thermal, electrical and environmental limitations. Any modifications made to the product by the customer will invalidate the warranty. Kingfisher Lighting Ltd reserve the right to repair or replace products at their discretion. Replacement of products does not include costs associated with installation. Terms and conditions apply.

# Product Range

## Amenity

36	The NAVAR Series
42	Compass
44	ARTELYS
46	Italo 2 Urban
48	ECORAYS
50	MOD 2.0 Urban
52	Revelampe
54	Villa II
56	Krane
58	Cono
60	Lunio
62	Zoya

## Streets

66	STYLO
68	Master
70	Italo Street
72	Viva-City Pro
74	I-TRON

## Flood Lights

78	Zactis
80	Italo Flood
82	MOD 2.0 Pro
84	AMNIS Flood
86	AMNIS Match
88	Viva-City Flood

## Architectural and Accent

92	Pixel Façade
94	Tula
96	Ellis
98	Miko Wall
100	Krion
102	Tito Series
104	Duedieci
106	Dueventi
108	Napo
110	Dot
112	Moto
114	Pantheon

## Wall Lighting

118	Quarto 2.0
120	Semita Arc
122	Semita Urban

## Bollards

126	Vailo
128	Pixel Bollard
130	Miko Bollard
132	Gothic 180
134	Kompass
136	Kubix
138	Klou
140	Klou IK
142	Helvellyn 2.0

## Light Poles

146	Soul 180
148	Quadrio
150	MOD 2.0 Tower and Bollard

## Inground, Recessed and Surface Mounted

154	Inground Series
156	Thunder Series
158	Ray Series
160	Stone Series
162	Cinep
164	Tocca 2.0

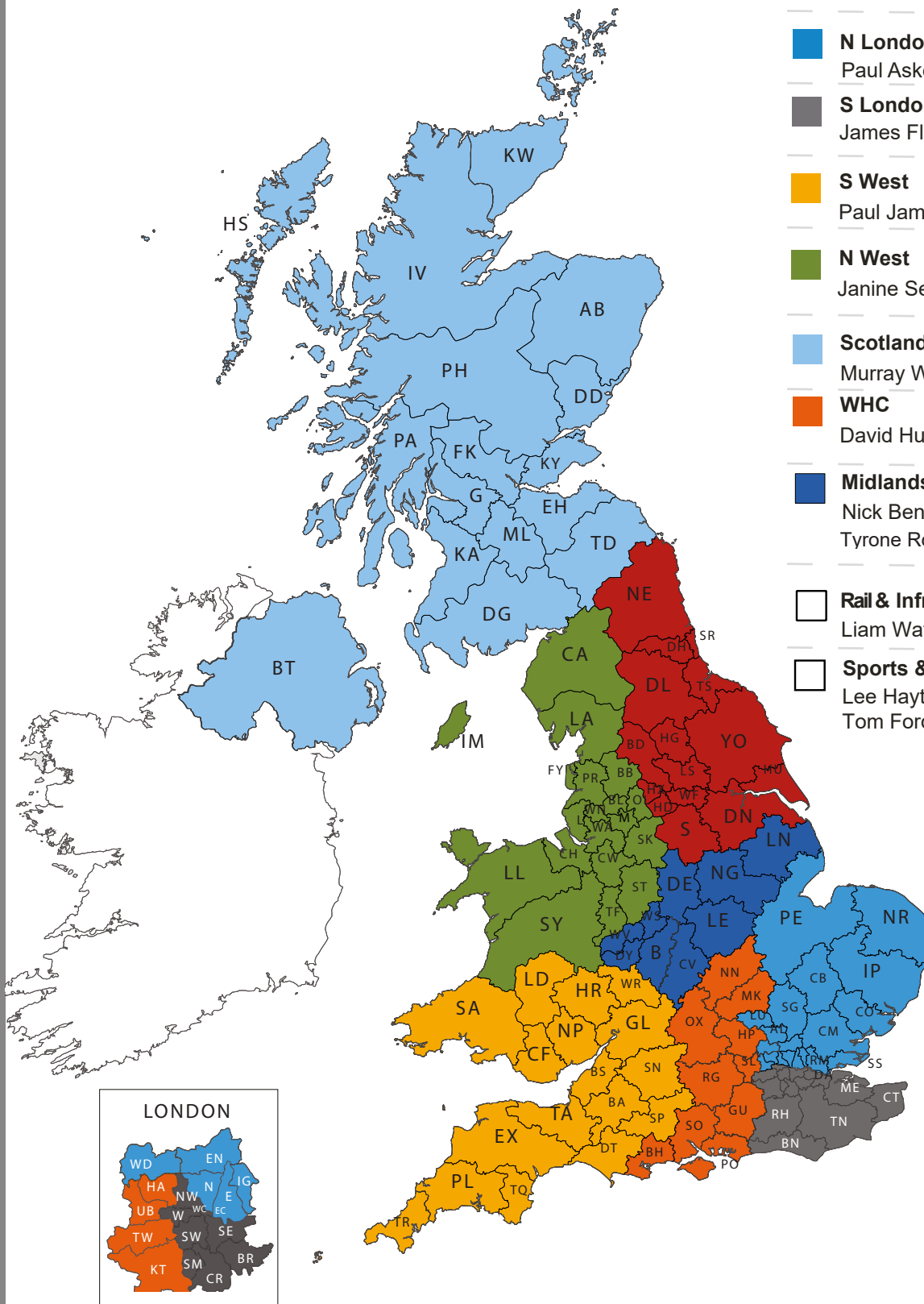




# Product Index

A	5	About Us	M	4	Luceco			
	9	AEC		60	Lunio			
	34	Amenity Luminaires		N	68	Master		
	84	Amnis Flood			130	Miko Bollard		
	86	Amnis Match			98	Miko Wall		
	90	Architectural and Accent			82	Mod 2.0 Pro		
	13	Arcluce			150	Mod 2.0 Tower		
	44	Artelys			50	Mod 2.0 Urban		
B	124	Bollards	N		112	Moto		
	171	Bracket		108	Napo			
C	24	Catenary	O	38	Navar - Pro			
	162	Cinep		37	Navar - Urban			
	167	Columns		39	Navar - Urban Pro			
	42	Compass		P	27	Optics Explained		
	58	Cono					7	Our Partners
	183	Contacts						
D	110	Dot	P	114	Pantheon			
	104	Duedieci		128	Pixol Bollard			
	106	Dueventi		92	Pixol Façade			
E	48	Eco Ray	Q	148	Quadrio			
	96	Ellis		118	Quarto 2.0			
	25	Emergency		174	Quick Reference Guide			
F	76	Flood Lights	R	158	Ray			
G	132	Gothic 180		10	Reflector Technology			
H	142	Helvellyn 2.0	S	52	Revelampe			
				120	Semita Arc			
				122	Semita Urban			
				146	Soul 180			
I	154	Inground	T	160	Stone			
	152	Inground, Recessed and Surface Mounted		64	Street			
	46	Italo 2 Urban		66	Stylo			
	80	Italo Flood		V	126	Vailo		
	70	Italo Street						
K	74	I-TRON	W	156	Villa II			
	22	Kingfisher Controls		102	Thunder			
	178	Kingfisher Rail		164	Tito Series			
	177	Kingfisher Sport		94	Tocca 2.0			
	138	Klou		Z	72	Viva-City Flood		
	140	Klou IK						
	134	Kompass						
	56	Krane						
	100	Krion						
L	136	Kubix	Z	116	Wall Lighting			
	144	Light Poles		78	Zactis			
	20	Lighting Design Service		62	Zoya			

## Key Contacts



 Yorkshire

Wayne Briggs      07974 454606

Matt Kitson 07392 085907

**N London & East Anglia**

Paul Askew                      07974 454607

■ S London & SE

James Fletcher 07917 398217

**S West**

Paul James                      07741 314838

**N West**

Janine Sehne 07974 454612

**Scotland & N Ireland**

Murray Whyte      07392 090872



**WHC**

David Hughes      07777 640 336

**Midlands**

Nick Bennett      07741 310169

Tyrone Robinson 07929 829006

☐ Rail & Infrastructure

Liam Watson      07974 454610

☐ Sports & High Mast

Lee Hayter 07393 148858

Tom Ford 07974 454611





**Kingfisher  
Lighting**

Part of the LUCECO<sub>re</sub> group of companies

Ratcher Way  
Crown Farm Business Park  
Mansfield  
Nottinghamshire  
NG19 0FS  
UK  
T: +44 (0)1623 415900  
E: [sales@kingfisherlighting.com](mailto:sales@kingfisherlighting.com)  
[kingfisherlighting.com](http://kingfisherlighting.com)