



Kingfisher RAIL

kingfisherlighting.com

← Way out

STREET • AMENITY • ARCHITECTURAL • AREA • SPORTS • HIGH MAST • RAIL

PART OF THE **LUCECO** GROUP OF COMPANIES



Kingfisher RAIL



Established in 1988, Kingfisher is dedicated to creating innovative lighting solutions for projects across the nation. Our carefully curated range of dedicated rail lighting and accessories was born from years of experience, working alongside consultants and industry leaders.

Our specialist collection promotes energy efficiency, alongside sleek design and the boasts market leading technologies to allow for the perfect balance of style and functionality.

End-to-End Solutions

The Kingfisher Rail experts have worked with many rail and infrastructure sites across the UK, ensuring maximised performance with minimised energy consumption.

With extensive luminaire, accessories and service packages, we provide complete solutions for all zones including walkways, sidings, depots, platform lighting, car parks and building services.

The fully qualified Kingfisher Lighting Design Team create advanced lighting solutions that ensure the best possible performance, lux levels and ROI calculations. From small plot calculations through to full 3D visualisations, they'll design a high-quality system with excellent uniformity across your site.

Energy Efficient and Low Maintenance

Dedicated to continuous improvement, the Kingfisher Rail luminaire range utilises advanced technology in order to prioritise energy efficiency and future proofing. The versatility of our systems ensure we can incorporate bespoke control systems to further reduce energy consumption and costs on platforms, sidings, shunting yards, trackside, substations, and converter stations.

We understand the fast-paced atmosphere of the railway and infrastructure environments. Therefore, we strive to provide low maintenance products to help reduce the requirement of high-level lighting repair and replacements wherever possible, enhancing both the safety and efficiency for personnel.



Products



07

Kingfisher Controls



Kingfisher Controls
Part of the LUCECO group of companies

16

Emergency



18

Quick Reference
Guide



21

Lighting Design



23

Other Products Range



24

Contents







Project Support

We have a dedicated and passionate team who are driven by a desire to enhance lighting schemes with innovative solutions across the UK. We take a customer focussed approach to all projects with a determined team of project designers, technical lighting experts and project managers who will assist you along your journey to better lighting.

With our wrap-around services, we can offer project design and management, technical and product support, BIM capabilities, energy calculations, and ROI estimates. Each of our customers will have a project coordinator and project sales engineer assigned to them to ensure a seamless service.

Project Support

With a passionate team dedicated to creating innovative solutions, as well as a keen focus on exceeding the expectations of the customer, the Kingfisher Rail Team will guide you through every aspect of the project.

With our wrap-around services, we can offer project design and management, technical and product support, BIM capabilities, energy calculations, and ROI estimates. Each of our customers will have a project coordinator and project sales engineer assigned to them to ensure a seamless service.

Project Management

From concepts to completion, you'll be assigned a project engineer and support team who will be there through every step of your journey. Based at both Kingfisher HQ and in your region, they're on hand all day to assist with any queries and update you on the progress of your schemes.

BIM Capabilities

With increasing recognition in construction, we can provide BIM files for our luminaires to speed up the planning process and help smooth integration of luminaires into the building plan. We can work with you to understand any other design requirements you may have as well as providing the precise files and data.

Technical Support

As no two projects are alike, we offer technical support wherever and whenever you need it. From product selection and bespoke options to site visits, payback calculations and sustainability All the way through to data control solutions and smart technology integration.

Project Design

Based at Kingfisher HQ, we have a team of experienced LIA and LET qualified Project Designers who utilise the best design software to create everything from simple calculation plots to full 3D visualisations. You can also meet with the Project Designer to directly discuss your scheme.

Delivery

As soon as your project has been specified, we ensure that it is delivered to the contractor in accordance with the requirements of the site. We offer nationwide delivery options with safe, efficient offloading capabilities for luminaires and columns. The product is delivered to the site with clear scheme plans and instructions for installation.





VAILO



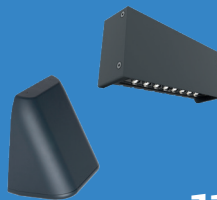
08

I-TRON



10

The Semita
Series



11

Zactis



12

Viva-City Flood



13

Product Range



VAILO

This distinctive product selection illustrates our commitment to creating best-in-class lighting solutions in the UK's rail and infrastructure industries. Incorporating high performance, efficiency, and sustainability, VAILO is Kingfisher's latest industry-leading bollard.

High Grade GRP

With a non-conductive GRP surface, VAILO is perfect for Class 2 installations and minimises touch potential.

Ease of Installation

Equipped with a damage free opening tool as well as an adjustable alignment plate, VAILO allows simplified installation on site.

Outstanding Spacings

Manufactured with a bespoke optical system, VAILO produces an outstanding projection of light whilst minimising the number of fixtures needed with up to 12m spacing capabilities.



High Quality Components

Designed and Engineered in the UK, this premium luminaire utilises tier one components to create a harmonious balance of form and function.

Adjustable Distribution

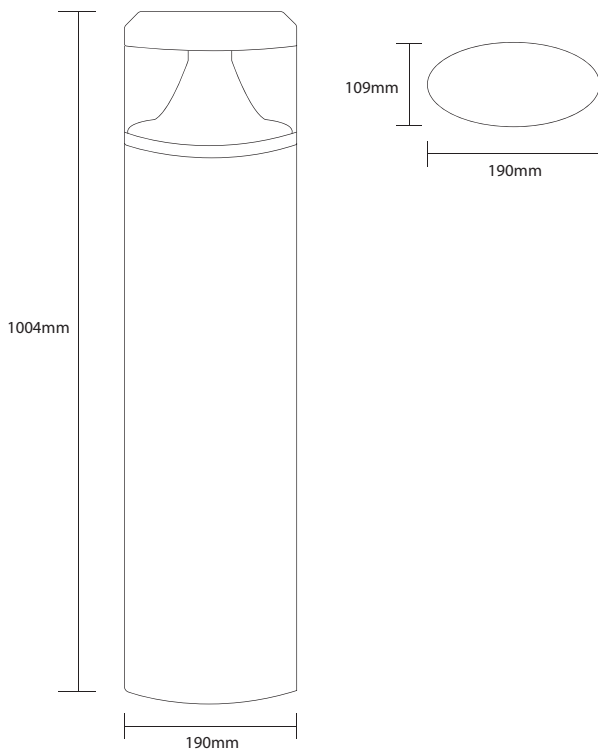
With opportunities for single and twin illuminations, this versatile bollard optimises performance and minimises spill light.

Controls Compatible

Fully compatible with lighting control systems, the GRP design pairs well with the Kingfisher Controls system allowing excellent signal strength for optimised performance.

VAILO

Designed and engineered in the UK, VAILO is a sleek, low glare bollard offering a best-in-class optical system. Available with an array of lumen packages, as well as single or twin sided illumination and adjustable alignment on site.



Scan for
full product
specification

Key Features

- Luminaire Lumens 251 - 2282
- Power 4.0 – 25.0W
- Luminaire Efficacy Up to 138lm/W
- 4000K, CRI>70
- Lifetime>100,000
- Asymmetrical
- Non-Conductive GRP Finish
- Double Insulated
- On Site Adjustable Output
- Emergency Options

Applications

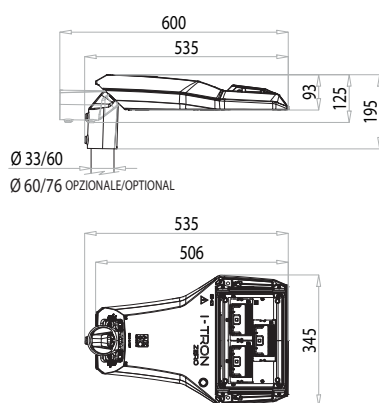
- Rail Sidings
- Pathways
- Pedestrian Areas
- Building Entrances
- Open Urban Areas





I-TRON is a high-performance street light. The modular lens and reflector based system with high-transparency tempered glass offers an energy efficient, quality output.

I-TRON



Key Features

- Luminaire Lumens 1,680 – 14,640
- Power 11.9 – 100.0W
- Luminaire Efficacy Up to 156.0lm/W
- 2700K, 3000K, 4000K , CRI>70
- Lifetime>100,000
- Asymmetrical
- Marine Grade Finish as Standard
- Comfort Glass
- Dimming Options
- Photocell and NEMA Options
- Low Colour Temperature Options

Applications

- Street lighting
- Highways
- Area Lighting
- Car parks
- Parks & plazas



Scan for
full product
specification

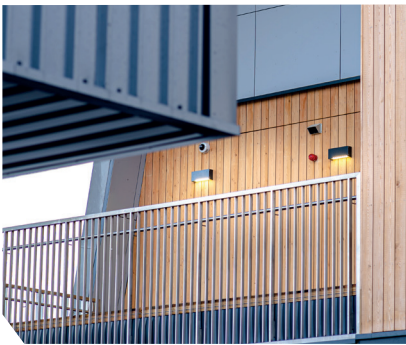


The Semita Series

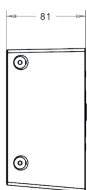
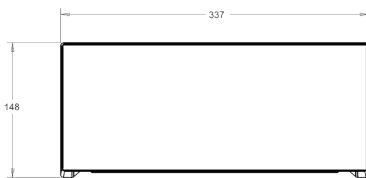
The Semita Series is our contemporary wall pack range with 0% ULOR and colour temperature options. Available with street, path and flood optics, this unique collection also has comfort options available for a softer output.



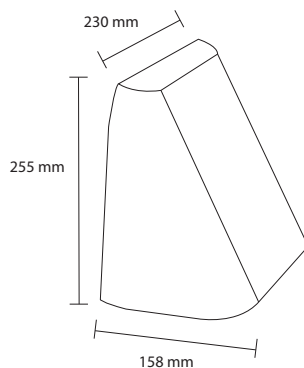
Scan for
full product
specification



Semita Urban



Semita Arc



Key Features

- Luminaire Lumens 783 – 1,611
- Power 6.0 – 13.2W
- Luminaire Efficacy Up to 146lm/W
- 4000K, CRI>70
- Lifetime>100,000
- Asymmetrical
- Low Colour Temperature Options
- Photocell Options
- Emergency Options

Applications

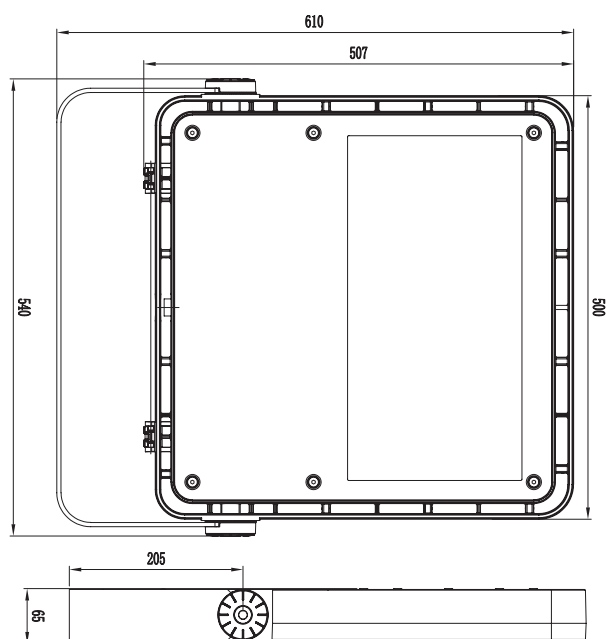
- Building Perimeters
- Pathways
- Facade Lighting
- Civic Areas
- Pedestrian Areas





Zactis is a high-performance flat-to-ground LED flood light perfect for high mast and area applications. As well as facilitating easy installation and maintenance, the sleek, low-profile design, reduces the load together with decreasing windage.

Zactis



Key Features

- Luminaire Lumens 2,765 – 9,984
- Power 21.5 – 75.5W
- Luminaire Efficacy Up to 139lm/W
- 4000K, CRI>70
- Lifetime>100,000
- Asymmetrical
- Marine Grade Finish as Standard
- Comfort Glass
- Dimming Options
- Photocell and NEMA Options
- Low Colour Temperature Options

Applications

- Sports
- High mast lighting
- Car parks
- Area lighting
- Security



Scan for
full product
specification

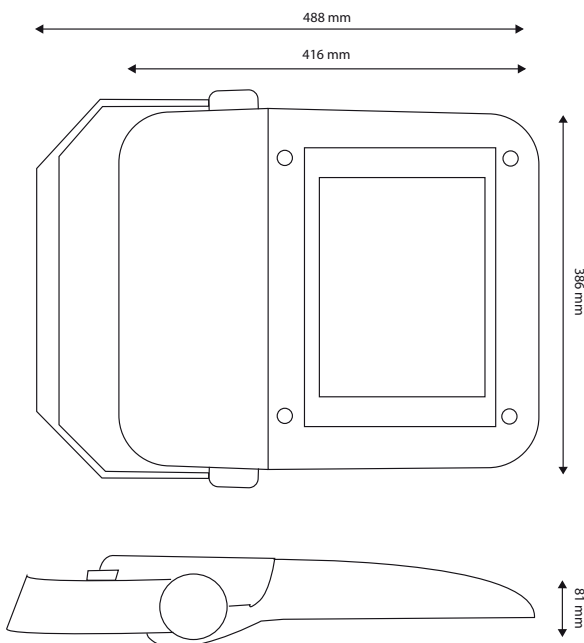


Viva-City Flood

The Viva-City Flood is a sleek, powerful luminaire with asymmetrical distribution. It is part of the Viva-City family.



Scan for
full product
specification



Key Features

- Luminaire Lumens 6,440 – 16,780
- Power 60.0 – 120.0W
- Luminaire Efficacy Up to 146lm/W
- 4000K, CRI>70
- Lifetime>100,000
- Asymmetrical
- Low Colour Temperature Options
- Photocell and NEMA Options

Applications

- Sports
- High mast lighting
- Car parks
- Area lighting
- Security



Columns Range

Kingfisher Rail also have a vast range of conical and tubular columns designed in accordance with the BS EN40. The collection includes heights from between 4m to 8m with both flanged and rooted options to suit a number of locations including car parks, roadways and walkways. They are also available in a variety of RAL references to meet any site aesthetic.



Experts in columns

- Wide range of columns and masts
- Design facility to help you specify
- Support to match the columns with luminaires and brackets
- Column key and door spares available

Maintained stock levels

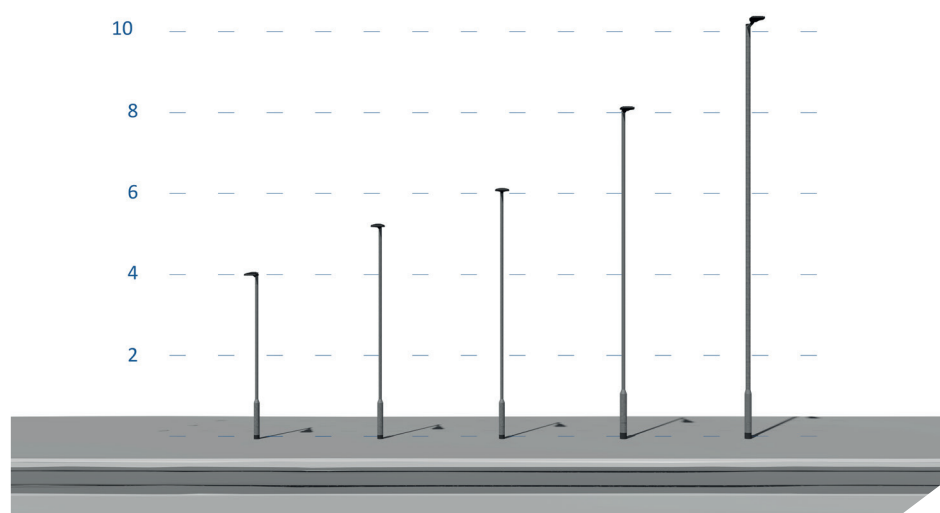
- Extensive stock of most columns held at our warehouse
- In-house fabrication and finishing options

Nation-wide delivery

- Hi-ab equipment to enable fast and safe off-loading
- Fleet fitted with trackers to monitor deliveries
- Helpful drivers who handle the on-site deliveries

High quality standards

- Designed in accordance with BS EN40
- Manufactured from steel tube to EN10210



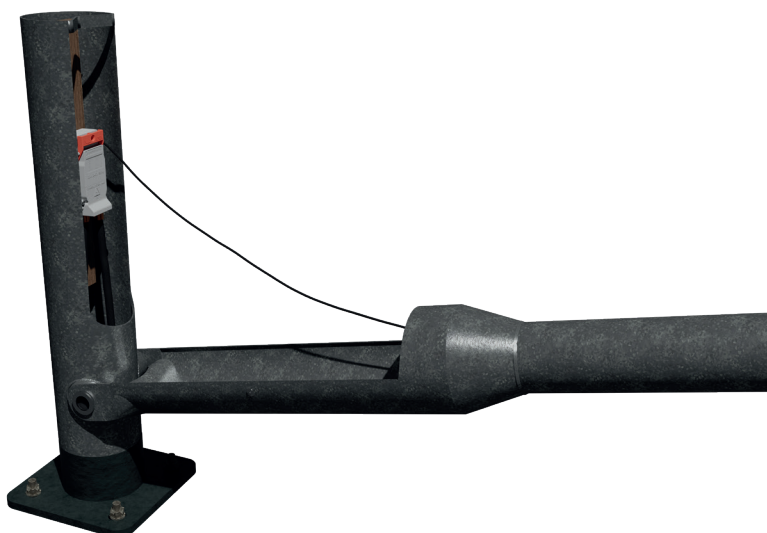


Based Hinged Column

Designed to exceed British Standards, these quality hot dip galvanised columns are made for strength and longevity. The base hinge design allows for quick and safe lowering using industry standard hydraulic raise and lower tools. Our columns host a marine grade back board and earth braids as standard and are available for both flange mounting and rooted applications.

Key Features

- 6 - 8m
- 114mm shaft
- Flange or root mounting options
- Marine grade back board & earth braid
- Earth bolts & conduit included as standard with rooted option
- Compatible with industry standard hydraulic raise and lower tools
- Perfect for railside applications



Scan for
full product
specification





Kingfisher Controls

Part of the LUCECO group of companies



Essential to getting the most for your money, controls systems are one of the greatest energy savers within lighting. Increasing functions on site, extending hours and increasing overall versatility, Kingfisher Controls can be tailored to meet specifications whilst saving you money.

How does it work?

Each luminaire has a node or controlled installed which helps to programme PIR, photocell and relay options. The Kingfisher team will help you select the best option for your site – web-based portal or switch system.

Web-Based Portal

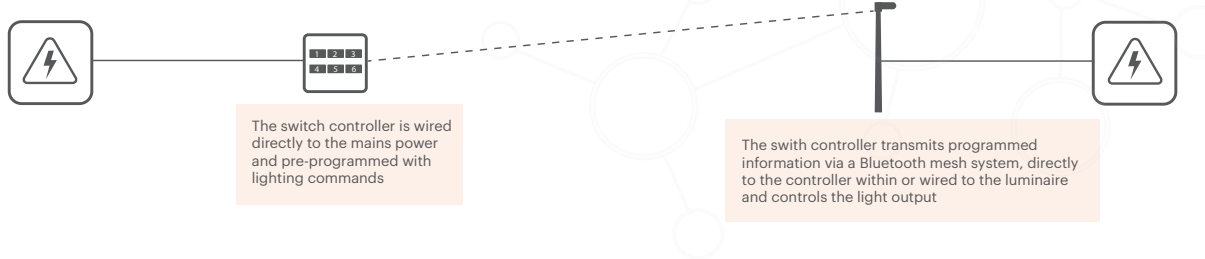
Utilising an online portal such as an online portal or app, this system works via a Bluetooth mesh system. This smart system increases your flexibility on site with control options available for all events in addition to the standard set profiles.

Switch System

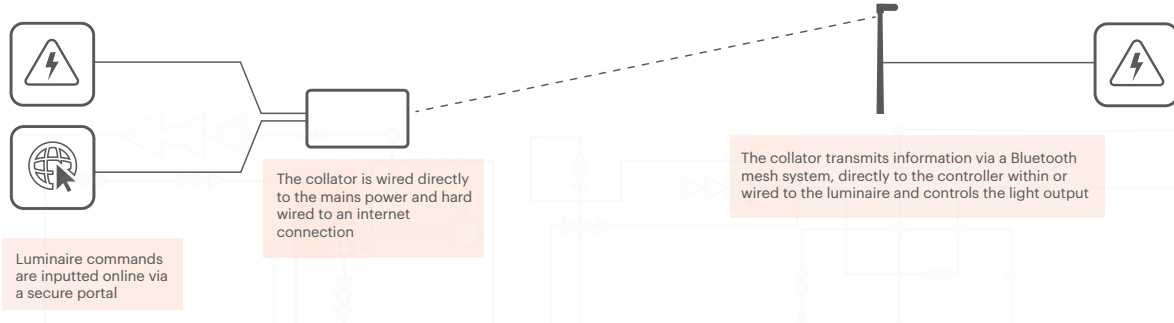
Connected directly to the mains, the lighting controller is programmed with your commands. This system doesn't require an internet connection unlike the web-based system. Everything comes preprogrammed with the switch system allowing simplified controls at the touch of a button.



Switch System



Web-Based Interface



The system can then be used in several scenarios including

- Dim Lighting by DALI or 1-10V
- Switch Lighting on or off via Relay or Daylight sensor
- Scene Setting
- Part Night Dimming
- Remote Configuration and Diagnostics

Collator



Controller



Scene Switch



Environment



Kingfisher Rail hold environmental responsibility at its core. With ongoing concerns regarding light pollution, ecology and sustainability, we're meticulously researching new methods to reduce our overall impact on the environment.

Light Pollution

A rising issue in the industry; light pollution can be damaging to several areas causing nuisance light or even interrupting the standard circadian rhythms of organisms. The IDA (International Dark Skies Association) has a mission to reduce the amount of light pollution throughout the world and educate others on reputable manufacturers which includes Kingfisher Lighting.

Ecology

Artificial light can be damaging to many ecological environments and there are four main factors in which organisms may be affected – Attraction, Avoidance, Photoperiodism and Spectral Quality. Each of these change behavioural patterns and responses of living organisms so it is crucial we reduce the amount of light in natural habitats.

Nevertheless, Kingfisher Rail have experience in sites located close to residential developments as well as close to natural habitats and nature reserves so we can drastically reduce the amount of pollution for your site.

Our Environmental Journey

Kingfisher have been on an environmental journey for many years now in which we have been reviewing processes and services to ensure minimal emissions are produced. We have a mission to be Net Zero by 2025.

We design products with circular economy in mind and with a focus on sustainability and the philosophy of reduce, reuse and recycle. This allows all parts to be replaceable and repairable extending the lifetime of your fitting.





Emergency

With public safety as the primary motivation, most new buildings and developments are required to install emergency lighting. There is a tendency to avoid this type of safety lighting because of concerns about poor aesthetics or having to install more than one light source to cover all requirements.

A wide range of emergency lighting fixtures has been developed by us, which do not compromise form or functionality in any way.

Emergency Lighting Explained

Essentially, emergency lighting ensures safe passage from muster points during a power outage by activating low level lighting. Several types of emergency lighting are available, from maintenance to self-testing with DALI.

Maintained

The most common form of emergency lighting uses an onboard battery and runs for 3 hours at 3W-5W. The low-level light facilitates the safe passage of personnel into safety zones.

The fitting has both 'permanent live' and 'switch live' wiring. By using a time clock or photocell, the switch live turns the fitting on and off at full power during the day. During a power outage, the permanent live will charge the batteries and trigger the fitting to switch over to emergency mode.



Self-Test

As with maintained emergency packs, the LED indicator is integrated into the system and functions in the same manner. Using this indicator, you can tell if the system is fully functional without opening the fitting.

If everything is working correctly the indicator will illuminate green. On the other hand, a red LED indicates a system fault. Through sequential flashing, this red light indicates the exact location of the fault.

In order to minimize downtime of the emergency function, this system allows maintenance staff to diagnose faults quickly.

DALI Self-Test

This is the most complex self-test emergency system, which is compatible with DALI-enabled CMS systems. By using this system, maintenance personnel can be alerted and diagnose faults remotely. Therefore, maintenance and repairs can be done quickly and efficiently.



Quick Reference Guide

Our products are designed with versatility in mind, and we pride ourselves on having an outstanding market-leading product range with a host of options in order to offer the perfect solutions for your site.

Use the quick reference guide below to see what options are available at a glance.

Product	Photocell	PIR	Nema/ Zhaga	Emergency	Emergency - Self Test	DALI	Full Programmable DALI Driver	Controls Compatible	4000K	3000K	2700K	Marine Grade	RAL Option	Overpainting Option	Catenary
I-TRON	Y	N	Y	N	N	Y	Y	Y	Y	Y	R	Y	Y	N	N
Zactis	Y	N	Y	N	N	Y	Y	Y	Y	R	Y	Y	N	N	N
Viva-City Flood	Y	N	R	N	N	Y	Y	Y	Y	N	Y	N	N	R	N
VAILO	Y	N	N	Y	R	Y	Y	Y	Y	N	Y	Y	N	N	N
Semita Urban	Y	N	N	Y	Y	Y	Y	N	Y	R	Y	N	N	Y	N
Semita Arc	N	N	N	Y	Y	Y	N	N	Y	N	Y	N	N	N	N
Columns	N	N	N	N	N	N	N	N	N	N	N	R	R	Y	R

Key
AEC
Kingfisher





Lighting Design Capabilities

Essential to the success of your project, lighting design is an underestimated and underappreciated asset. By determining your lux levels and the uniformity of your site, a skilled lighting designer will ensure you meet all relevant lighting legislations and industry guidance.

With innovation, quality and longevity in mind, the Kingfisher Lighting Design Team have created a vast array of schemes nationwide assuring efficiency throughout. Kingfisher now offer the next generation of lighting design with 3D and Virtual Reality walkthroughs.

Perfect for demonstrating how luminaires sit within your project, this method allows a true visualisation of your rail and infrastructure lights especially in areas consisting of overhead line equipment. Built from BIM models, these designs ensure the most realistic visual aid possible and even represent shadowing from objects around the site where standard lighting design wouldn't suffice.



Other Product Ranges



Ellis

Ideal for illuminating building perimeters, this sleek Italian luminaire features many optical packages. Available in both one and two way variants this wall-mounted fitting creates the perfect illumination for signage and entrances.



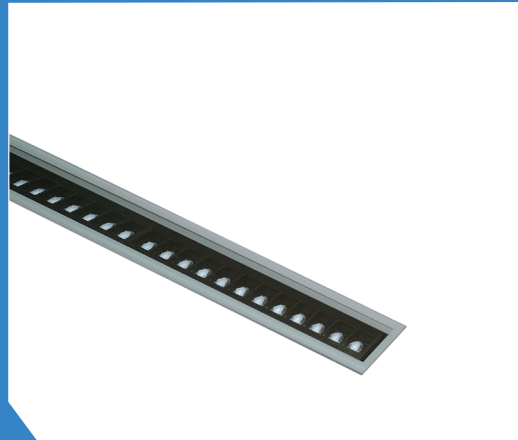
NAVAR PRO

With over 280 configurations as standard, this unique luminaire is perfect for a contemporary street, pathways and car park illuminations. With 0% ULOR, NAVAR will reduce the amount obtrusive light due to it's bespoke optical system.



Tocca 2.0

Perfect for recessing into hand rails and baseboards, Tocca 2.0 is favoured for it's flexibility within sites. With a comfortable illumination, it also has low colour temperature options to promote eco-centricity across sites.



Installed flush at ground level, this luminaire produces a symmetric distribution in order to enhance the key architectural features of a site. With a static load capacity of up to 1000kg, this walk over grade fitting is ideal in public spaces.

Krion



With a classic design, Revelampe utilises modern LED technology which when paired with AEC's Hyper Comfort Optic creates the ultimate comfort experience for public areas. This lantern perfectly suits a traditional historical site.

Revelampe



This traditional heritage lantern is best placed in walkways and pathways. With a symmetric distribution, Villa has colour temperature options creating an ecocentric environment.

Villa II





Contacts

Get in touch with our expert team for more information and to see how we can transform your rail projects.

Liam Watson

Rail & Infrastructure

T: 07974 454 610

E: lwatson@kingfisherlighting.com

Lisa Cunningham

Project Support

T: 01623 415912

E: lcunningham@kingfisherlighting.com





**Kingfisher
Lighting**

Part of the LUCECO group of companies

Ratcher Way
Crown Farm Business Park
Mansfield
Nottinghamshire
NG19 0FS
UK
T: +44 (0)1623 415900
E: sales@kingfisherlighting.com
kingfisherlighting.com