



# Kingfisher Lighting

A division of the LUCECO group

## Datasheet

### TULA Series



**Arcluce**

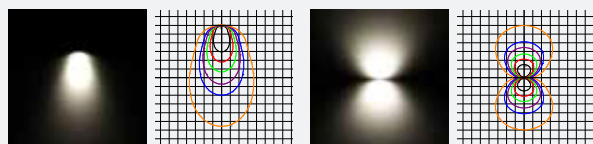
#### Specification Text

The TULA shall be manufactured from die-cast aluminium and powder coated with a graphite grey or aluminium silver finish. It shall have a power output ranging between 9 - 10W, with an efficacy from 65 - 100lm/W. It shall deliver 650 - 900 luminaire lumens. The TULA has a range of different beam angles and both one and two way illumination. Available in 3000K or 4000K, the luminaire shall be IK10 and IP66 rated.

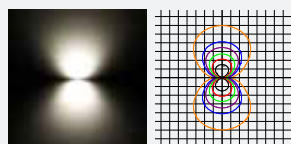
#### Specification

Weight:	0.7 kg - 0.8 kg
Windage:	0.02 m <sup>2</sup>
Material:	Die-cast Aluminium
Paint Finish:	Aluminium Silver

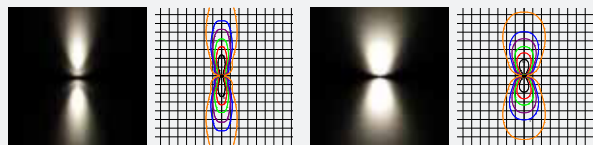
#### Optics



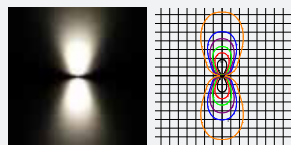
Symmetrical 48°



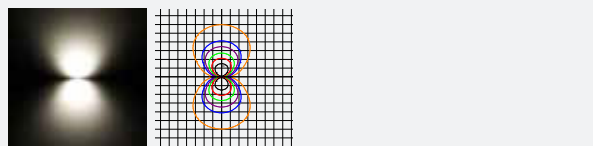
Symmetrical 92° + 92°



Symmetrical 25° + 25°



Symmetrical 48° + 48°



Symmetrical 92° + 92°

#### Product Description

TULA, the small yet impactful wall luminaire ideal for architectural schemes. This versatile luminaire offers single or twin illumination and a range of mounting options.

#### Key Features

- 9.0W - 10.0W
- 650 - 900 Luminaire Lumens
- Efficacy of up to 100.0 lm/W
- 3000K, 4000K, CRI>80
- IP66, IK07
- Lifetime > 60,000hrs, L80
- Comfort or Performance Option
- Diffused Illumination
- Bollard Version Available



**5 YEARS**  
WARRANTY

**60,000 hrs**  
LIFETIME

## Other Options Available

Contact for further details

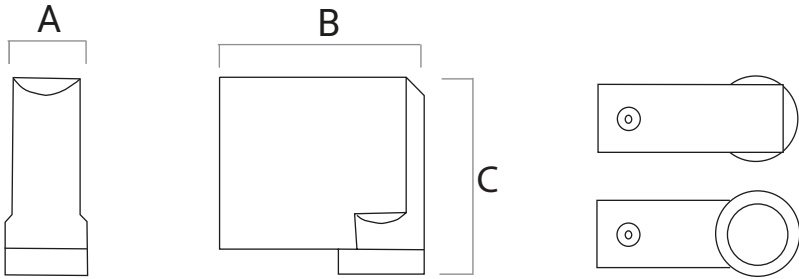
- Colour Temperature Opportunities

## Mounting Options

- Wall Mount

Body Type	A	B	C
TULA Performance - One Way	50	121	117
TULA Performance - Two Way	50	121	131

All measurements in mm



Code	Power (W)	Luminaire Lumens (lm)	Luminaire Efficacy (lm/W)	Optic	CCT(K)	IP	IK	Weight (kg)	Driver Included	Driver Type
TULP-1W-SY25-840-10-21	10.0	825	83	Symmetrical 25°	4000	IP66	IK07	6.5	Yes	Fixed
TULP-1W-SY48-840-10-21	10.0	725	73	Symmetrical 48°	4000	IP66	IK07	6.5	Yes	Fixed
TULP-1W-SY88-840-10-21	10.0	525	53	Symmetrical 88°	4000	IP66	IK07	6.5	Yes	Fixed
TULP-2W-SY25-840-9-21	9.0	900	100	Symmetrical 25° + 25°	4000	IP66	IK07	6.5	Yes	Fixed
TULP-2W-SY48-840-9-21	9.0	800	89	Symmetrical 48° + 48°	4000	IP66	IK07	6.5	Yes	Fixed
TULP-2W-SY88-840-9-21	9.0	700	78	Symmetrical 92° + 92°	4000	IP66	IK07	6.5	Yes	Fixed