



Kingfisher Lighting

A division of the LUCECO group



Datasheet

CONO

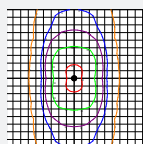
Specification Text

The CONO shall be manufactured from die-cast aluminium with an extruded aluminium body and powder coated with a graphite grey or aluminium silver finish. It shall have a power output of 35W, with an efficacy from 71 - 117lm/W. It shall produce 3,600 - 4,100 luminaire lumens. The CONO shall be available with a range of optics for urban projects. Available in 3000K or 4000K, the luminaire shall be IK10 and IP66 rated with bracketry and catenary options available.

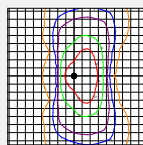
Specification

Weight:	4.9 kg – 7.0 kg
Windage:	0.07 m ² - 0.09 m ²
Material:	Die-cast Aluminium
Paint Finish:	Graphite Grey

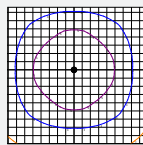
Optics



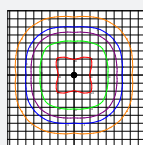
Symmetrical Street
Optic Type 1



Symmetrical Street
Optic Type 3



Symmetrical Urban
Optic Type VS-W



Symmetrical Urban
Optic Type VS-M

Product Description



A unique conical luminaire with an array of optics for the perfect distribution. An ideal solution for both post top and catenary applications including public realm and urban areas.

Key Features

- 35.0W
- 3,600 - 4,100 Luminaire Lumens
- Efficacy of up to 117.0 lm/W
- 3000K & 4000K, CRI>70
- IP66, IK08
- Lifetime > 60,000hrs, L80, B20
- Comfort Options
- Performance Options



Other Options Available

Contact for further details

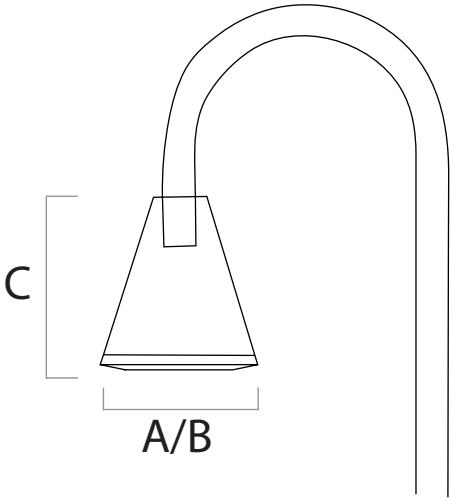
- Colour Temperature Options

Mounting Options

- Catenary Suspended

Body Type	A	B	C	D
Catenary Suspended	300	400	470	-
Bracket Suspension	300	300	330	60 - 76

All measurements in mm



Code	Power (W)	Luminaire Lumens (lm)	Luminaire Efficacy (lm/W)	Optic	CCT(K)	IP	IK	Weight (kg)	Driver Included	Driver Type
CONP-CAT-SYT1-840-35-16	35.0	3,650	104	Street Optic Type 1	4000	IP66	IK08	7.0	Yes	Fixed
CONP-CAT-SYT3-840-35-16	35.0	3,850	110	Street Optic Type 3	4000	IP66	IK08	7.0	Yes	Fixed
CONP-CAT-SYVSW-840-35-16	35.0	3,600	103	Urban Optic Type VS-W	4000	IP66	IK08	7.0	Yes	Fixed
CONP-CAT-SYVSM-840-35-16	35.0	4,100	117	Urban Optic Type VS-M	4000	IP66	IK08	7.0	Yes	Fixed
CONP-SYT1-840-35-16	35.0	3,650	104	Street Optic Type 1	4000	IP66	IK08	4.9	Yes	Fixed
CONP-SYT3-840-35-16	35.0	3,850	110	Street Optic Type 3	4000	IP66	IK08	4.9	Yes	Fixed
CONP-SYVSW-840-35-16	35.0	3,600	103	Urban Optic Type VS-W	4000	IP66	IK08	4.9	Yes	Fixed
CONP-SYVSM-840-35-16	35.0	4,100	117	Urban Optic Type VS-M	4000	IP66	IK08	4.9	Yes	Fixed