



Kingfisher Lighting

A division of the LUCECO group



Datasheet

CERO Solar Street

Specification Text

The CERO shall be manufactured from die-cast aluminium and powder coated in RAL 7016 Marine Grade finish. It shall have a power output of 30W - 50W, with an efficacy of up to 203 lm/W. The luminaire shall deliver 5,426 - 9,732 luminaire lumens. It shall have a fully programmable driver with solar control functionality. Available in 2700K or 4000K, the luminaire shall be IK08 and IP66 rated. It shall have PIR options available.

Specification

Weight:	17.5 kg - 23.5 kg
Windage:	0.06m ² - 0.09m ²
Material:	Die-cast Aluminium
Paint Finish:	RAL7016 Anthracite Grey Marine Grade Finish

Product Description

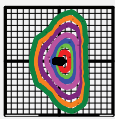
Defined by its sleek angular form and streamlined silhouette, CERO Solar Street is a modern, solar lighting system with an integrated solar panel.



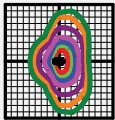
Key Features

- 30.0W - 50.0W
- 5,426 - 9,732 Luminaire Lumens
- Efficacy up to 205.0 lm/W
- 2700K & 4000K, CRI >70
- IP66, IK08
- Lifetime < 100,000 hrs, L90, B10
- Smart Energy Management
- Built for Harsh Environments

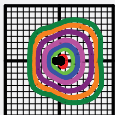
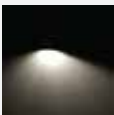
Optics



T2B Optic
Optimised for car park lighting, providing controlled forward throw and excellent uniformity.



T3B Optic
Designed for cycle paths and pedestrian routes, offering medium-wide asymmetric distribution.



T4B Optic
Ideal for open area and plaza lighting, ensuring wide, even illumination.

IP66	IK08	DIM	Colour Temperature	Marine Grade Finish
------	------	-----	--------------------	---------------------

3 YEARS WARRANTY	Control Compatible	100,000 hrs LIFETIME
------------------	--------------------	----------------------

Other Options Available

Contact for further details

- Colour Temperature Options
- PIR Options

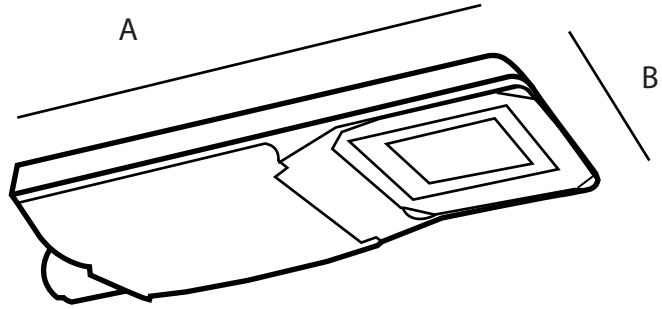
Mounting Options

- Post Top 60/76 mm
- Side Entry 60/76 mm

Dimensions

Body Size	A	B	C	D
CERO 1	825	365	145	60/76
CERO 2	1030	445	160	60/76

All measurements in mm



Code	Power (W)	Luminaire Lumens (lm)	Solar Panel Power	Battery Capacity (Wh)	Optic	CCT(K)	IP	IK	Weight (kg)	Driver Type	Driver Included
CER1-T2B-4-30MPPT	30.0	5,807	18V / 45W	537	Street Optic T2B	4000	IP66	IK08	17.5	Dimmable	Y
CER1-T2B-27-30MPPT	30.0	5,426	18V / 45W	537		2700	IP66	IK08	17.5	Dimmable	Y
CER1-T3B-4-30MPPT	30.0	5,959	18V / 45W	537	Street Optic T3B	4000	IP66	IK08	17.5	Dimmable	Y
CER1-T3B-27-30MPPT	30.0	5,542	18V / 45W	537		2700	IP66	IK08	17.5	Dimmable	Y
CER1-T4B-4-30MPPT	30.0	6,136	18V / 45W	537	Area Optic T4B	4000	IP66	IK08	17.5	Dimmable	Y
CER1-T4B-27-30MPPT	30.0	5,675	18V / 45W	537		2700	IP66	IK08	17.5	Dimmable	Y
CER2-T2B-4-50MPPT	50.0	9,508	16V / 75W	921	Street Optic T2B	4000	IP66	IK08	23.5	Dimmable	Y
CER2-T2B-27-50MPPT	50.0	8,900	16V / 75W	921		2700	IP66	IK08	23.5	Dimmable	Y
CER2-T3B-4-50MPPT	50.0	9,732	16V / 75W	921	Street Optic T3B	4000	IP66	IK08	23.5	Dimmable	Y
CER2-T3B-27-50MPPT	50.0	9,257	16V / 75W	921		2700	IP66	IK08	23.5	Dimmable	Y
CER2-T4B-4-50MPPT	50.0	9,686	16V / 75W	921	Area Optic T4B	4000	IP66	IK08	23.5	Dimmable	Y
CER2-T4B-27-50MPPT	50.0	9,245	16V / 75W	921		2700	IP66	IK08	23.5	Dimmable	Y