



**Kingfisher
Lighting**

Part of the LUCECO group of companies

Datasheet

VIVA-CITY Flood



Specification Text

The VIVA-CITY Flood shall be manufactured from die-cast aluminium and powder coated in RAL 7016 Anthracite Grey Marine Grade Finish. It shall have a power output ranging between 60 - 120W, with an efficacy from 107 - 140lm/W. It shall deliver 6,440 - 16,780 luminaire lumens. It shall have a fully programmable DALI driver. The VIVA-CITY Flood shall have specialised optics to suit pathway, road or open area applications. Available in 2700K or 4000K, the luminaire shall be IK08 and IP66 rated with photocell options available.

For DarkSky Specifications, the luminaire shall produce a CCT of 2700K.



Specification

Weight:	7.5 - 8.08 kg
Windage:	0.03 m ²
Material:	Die-cast Aluminium
Paint Finish:	RAL7016 Anthracite Grey
Embodied Carbon:	96 - 130 kg CO ₂ e

Product Description

The VIVA-CITY Flood is a sleek, high performance flood light with 0% ULOR with a variety of low glare distributions available.



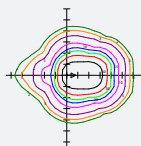
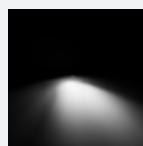
**Kingfisher
Lighting**

Part of the LUCECO group of companies

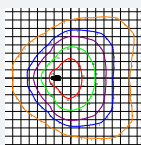
Key Features

- 60.0W - 120.0W
- 6,440 - 16,780 Luminaire Lumens
- Efficacy up to 140.0 lm/W
- 2700K, 4000K, CRI>70
- IP66, IK09
- Lifetime > 100,000hr, L80
- Part Night Dimming
- Photocell Option
- DarkSky Approved

Optics



Flood Optic 50°



Forward Throw Optic 70°



Circular Economy Score

0 to 0.05	Very poor circular economy performance
0.5 to 1.5	Some circular economy functionality
1.5 to 2.5	Definite/substantial progress to circularity
2.5 to 4.0	Excellent circularity

Other Options Available

Contact for further details

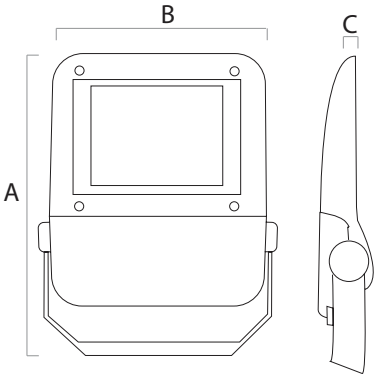
- Colour Temperature Options

Mounting Options

- Surface mount bracket

Body Type	A	B	C
Standard	488	386	81

All measurements in mm



Code	Power	Luminaire Lumens	Drive Current	Inrush Current A pk	Optic	CCT(K)	IP	IK	Weight kg	Driver Included	Driver Type
VCYF-FL50-4.6-60D-02	60.0	8,390	610	32.0	Asymmetrical Flood Optic 50°	4000	IP66	IK09	7.5	Yes	DALI
VCYF-FL50-27.6-60D-02	60.0	7,719	610	32.0		2700	IP66	IK09	7.5	Yes	DALI
VCYF-FL50-4.8-120D-02	120.0	16,780	810	65.0		4000	IP66	IK09	8.0	Yes	DALI
VCYF-FL50-27.8-120D-02	120.0	15,438	810	65.0		2700	IP66	IK09	8.0	Yes	DALI
VCYF-FW70-4.6-60D-02	60.0	7,001	610	32.0	Asymmetrical Forward Throw Optic 70°	4000	IP66	IK09	7.5	Yes	DALI
VCYF-FW70-27.6-60D-02	60.0	6,440	610	32.0		2700	IP66	IK09	7.5	Yes	DALI
VCYF-FW70-4.8-120D-02	120.0	14,002	810	65.0		4000	IP66	IK09	8.0	Yes	DALI
VCYF-FW70-27.8-120D-02	120.0	12,881	810	65.0		2700	IP66	IK09	8.0	Yes	DALI