

# Datasheet

## TULA Series



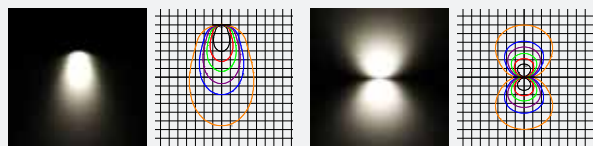
### Specification Text

The TULA shall be manufactured from die-cast aluminium and powder coated with a graphite grey or aluminium silver finish. It shall have a power output ranging between 9 - 10W, with an efficacy from 65 - 100lm/W. It shall deliver 650 - 900 luminaire lumens. The TULA has a range of different beam angles and both one and two way illumination. Available in 3000K or 4000K, the luminaire shall be IK10 and IP66 rated.

### Specification

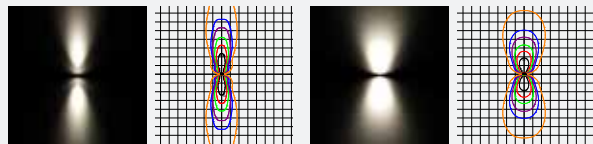
Weight:	0.7 - 0.8kg
Windage:	0.2m <sup>2</sup>
Material:	Die-cast Aluminium
Paint Finish:	Aluminium Silver

### Optics



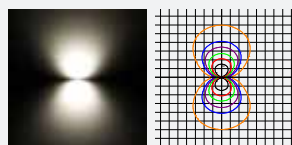
**Symmetrical 48°**

**Symmetrical 92° + 92°**



**Symmetrical 25° + 25°**

**Symmetrical 48° + 48°**



**Symmetrical 92° + 92°**

### Product Description

TULA, the small yet impactful wall luminaire ideal for architectural schemes. This versatile luminaire offers single or twin illumination and a range of mounting options.

### Key Features

- 9.0 - 10.0W
- 650 - 900 Luminaire Lumens
- Efficacy up to 650 - 100 lm/W
- 3000K, 4000K, CRI>80
- IP65, IP66, IK07, IK08, IK10
- Lifetime 60,000, L80
- Comfort or Performance Option
- Diffused Illumination
- Bollard Version Available

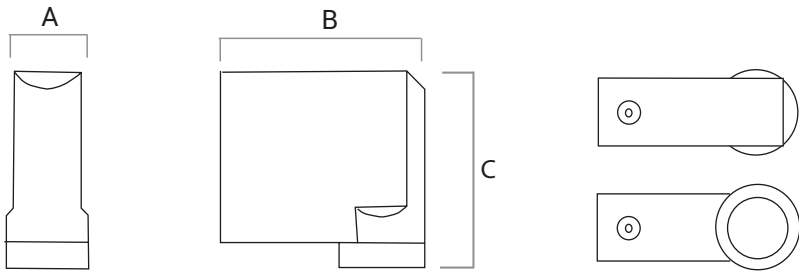


# Mounting Options

- Wall Mount

Body Type	A	B	C
TULA Performance - One Way	50	121	117
TULA Performance - Two Way	50	121	131

All measurements in mm



Code	Power	Luminaire Lumens	Drive Current	Optic	CCT(K)	IP	IK	Weight kg	Driver Included	Driver Type
TULP-1W-SY25-840-10-21	10.0	825	-	Symmetrical 48°	4000	IP66	IK07	0.71	Yes	Fixed
TULP-1W-SY92-840-10-21	10.0	650	-	Symmetrical 92° + 92°	4000	IP66	IK10	0.71	Yes	Fixed
TULP-2W-SY48-840-9-21	9.0	800	-	Symmetrical 48° + 48°	4000	IP66	IK08	0.82	Yes	Fixed
TULP-2W-SY92-840-9-21	9.0	700	-	Symmetrical 92° + 92°	4000	IP66	IK07	0.82	Yes	Fixed