


CIRECO

Illuminating Circular Economy



Kingfisher Lighting

Part of the LUCECO® group of companies



Distinctive Products, Outstanding Service

Built on a foundation of quality product design that encapsulates performance, efficiency and style, Kingfisher Lighting focus on bespoke end-to-end solutions to perfectly serve the specification of clients and surrounding environments.

Wrap-around services combine comprehensive project design and management, as well as offering technical support throughout. This together with 3D visualisations, BIM data, return on investment and energy calculations, ensures that projects are delivered to the highest standard.



Introducing CIRECO

With sustainability at the heart of the design philosophy, CIRECO was born through the dedication to reduce the impact on the environment.

Designed to support circular economy values, each element has been specifically produced to be repaired, replaced or recycled, minimising wastage and prolonging the lifespan of this innovative luminaire.

Offering the efficiency and performance you have come to expect from Kingfisher products, this fitting hosts tier one components including a DALI dimmable driver compatible with the majority of control systems. Available with a range of optical packages, colour temperature options and comfort glass, this luminaire range offers the perfect balance of sustainable form and function.

Circular Economy Values

Designed to be sustainable, this luminaire supports the values of circular economy 'Replace, Reuse, Recycle' minimising the impact on the environment

Optimised Optical Packages

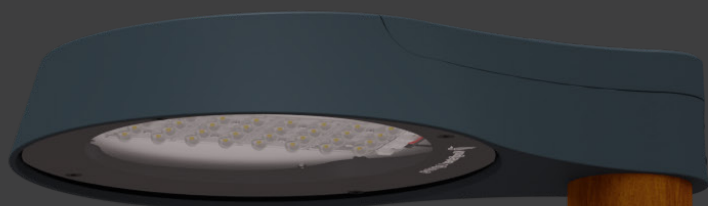
With a range of key performance optics specially designed for street and pathway applications, CIRECO is the perfect choice for both urban and suburban projects with the a key focus on sustainability

Future Proof

CIRECO hosts Zhaga Sockets as standard to further future proof the luminaire. Combining this with the D4i enabled driver, allows for the addition of sensors and controls post installation without any supplemental wiring or opening of the luminaire

0% ULOR

The outer body and flat-to-ground design, along with the a bespoke optical packages, ensures zero upward light is emitted from the fitting making it perfect for use in dark sky zones

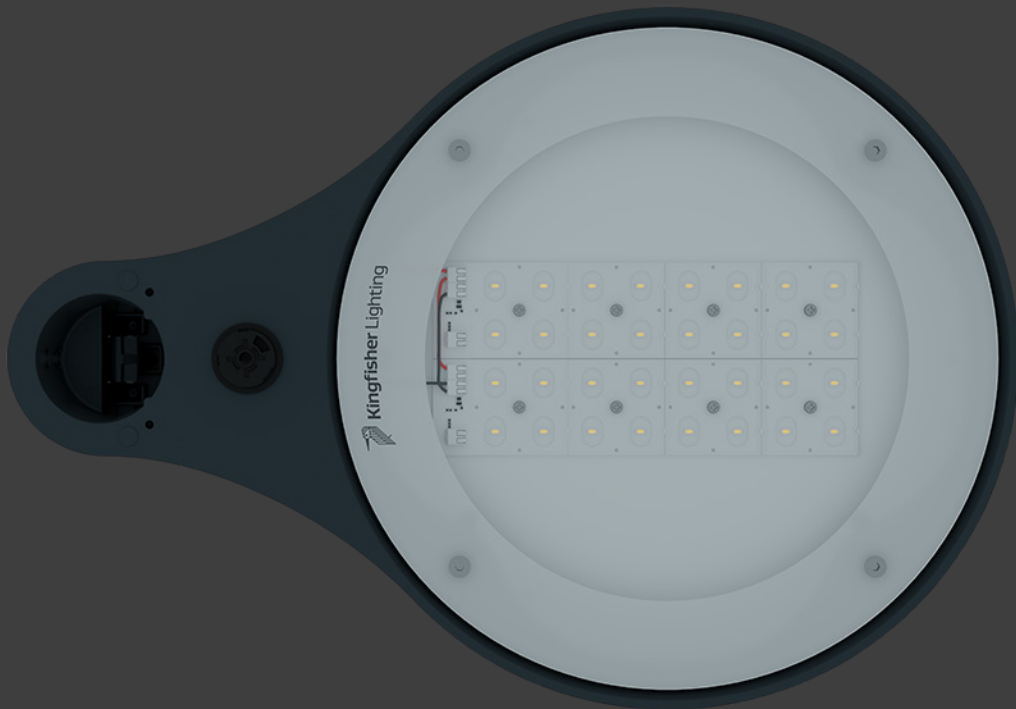
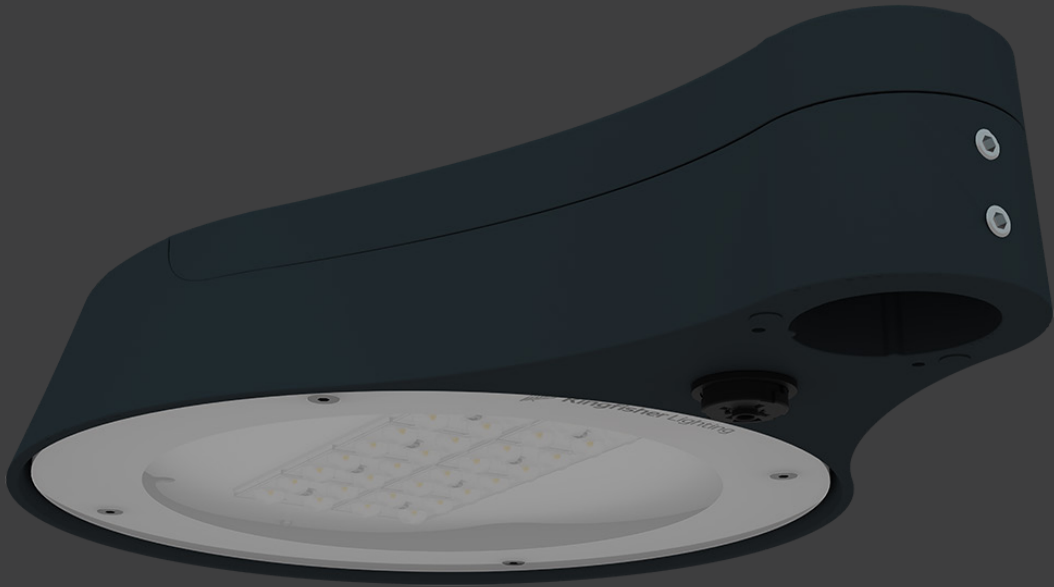
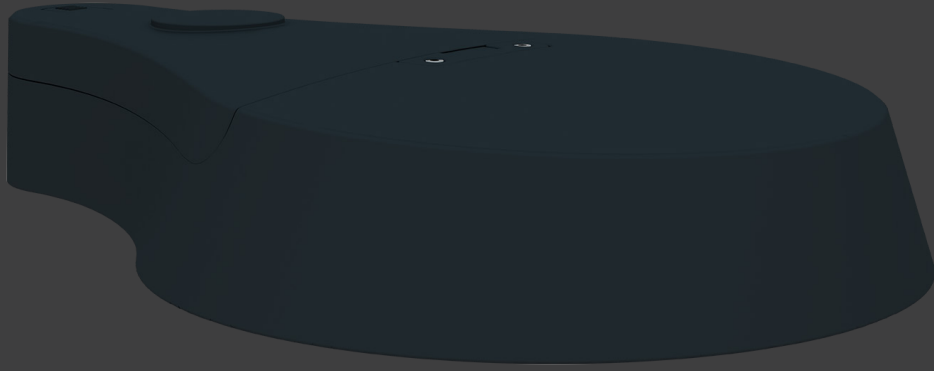


Sleek Design

The streamlined design of the luminaire body promotes a sleek aesthetic, making it perfect for modern projects

Comfort Options

With a comfort diffuser, CIRECO offers a soft, low glare option for those projects requiring a more delicate light source



CIRECO



Key Features

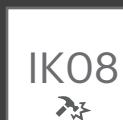
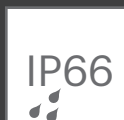
- 25.0W – 75.0W
- 3,804 - 10,925 Luminaire Lumens
- Efficacy up to 152.0 lm/W
- 2700K & 4000K
- 0% ULOR
- Flat-to-Ground
- Supports Circular Economy
- Comfort Option

Specification

Weight:	6.2kg
Windage:	0.09m ²
Material:	Die-cast Aluminium
Paint:	RAL 7016 Anthracite Grey
Finish:	Semi-Gloss Satin



Scan for full
product specification





Kingfisher Lighting

Part of the **LUCECO** plc group of companies

Ratcher Way
Crown Farm Business Park
Mansfield
Nottinghamshire
NG19 0FS
UK

+44 (0)1623 415900
sales@kingfisherlighting.com
Kingfisherlighting.com